

:

:

:

:

:

;"Bitzer",



3x 4CC-9.2-40S

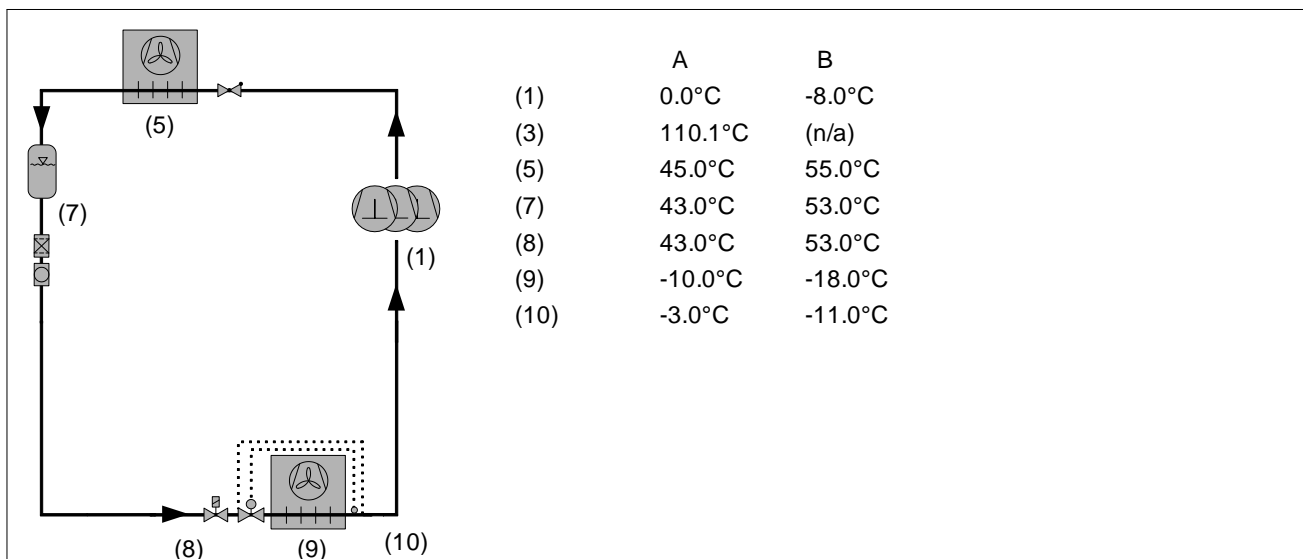
--

--

R22
 41.0 kW
 50 Hz / 400 V
 2.0K
 10.0K
 7.0K

T	SST: SCT:	A				B			
		-10.0°C 45.0°C				-18.0°C 55.0°C			
		Qo kW	Pe kW	COP W/W	%	Qo kW	Pe kW	COP W/W	%
		44.4	19.63	2.26	108.4	23.9	18.73	1.27	58.2
1	4CC-9.2-40S --> CR: 50%	14.82 7.41	6.54 3.53	2.26 2.10	33.3 16.7	7.96 0	6.24 0	1.27 0.00	33.3 0.0
2	4CC-9.2-40S --> CR: 50%	14.82 7.41	6.54 3.53	2.26 2.10	33.3 16.7	7.96 0	6.24 0	1.27 0.00	33.3 0.0
3	4CC-9.2-40S --> CR: 50%	14.82 7.41	6.54 3.53	2.26 2.10	33.3 16.7	7.96 0	6.24 0	1.27 0.00	33.3 0.0

!



R22

41.0 kW

50 Hz / 400 V

2.0K

10.0K

7.0K

		A	B
T	SST: SCT:	-10.0°C 45.0°C	-18.0°C 55.0°C
-	-	45.0 kW	24.2 kW
-	-	44.4 kW	23.9 kW
-	-	108.4 %	58.2 %
-	-	64.7 kW	42.9 kW
.	.	19.63 kW	18.73 kW
(400V)		37.2 A	36.0 A
/		2.26	1.27
.	.	1046 kg/h	632 kg/h
		110.1 °C	--

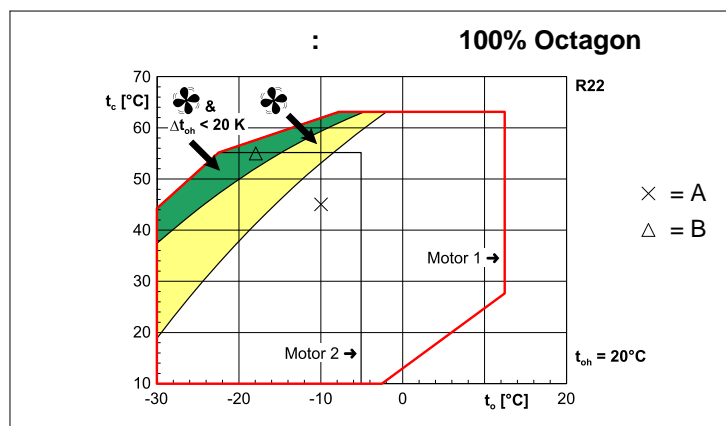
!

4CC-9.2-40S

R22
 41.0 kW
 50 Hz / 400 V
 2.0K
 10.0K
 7.0K

T	SST: SCT:	A	B
		-10.0°C	-18.0°C
		45.0°C	55.0°C
	-	15.02 kW	8.07 kW
	- *	15.22 kW	8.38 kW
	-	14.82 kW	7.96 kW
	.	6.54 kW	6.24 kW
(400V)		12.40 A	12.01 A
/		380-420V	380-420V
/ *		2.26	1.27
.		2.33	1.34
		349 kg/h	211 kg/h
		110.1 °C	--

B: EN12900 (/ (. 20° , + .) 0)

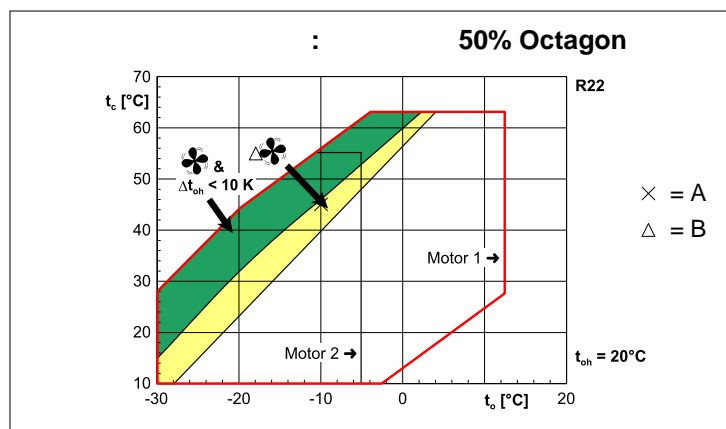


4CC-9.2-40S 50%

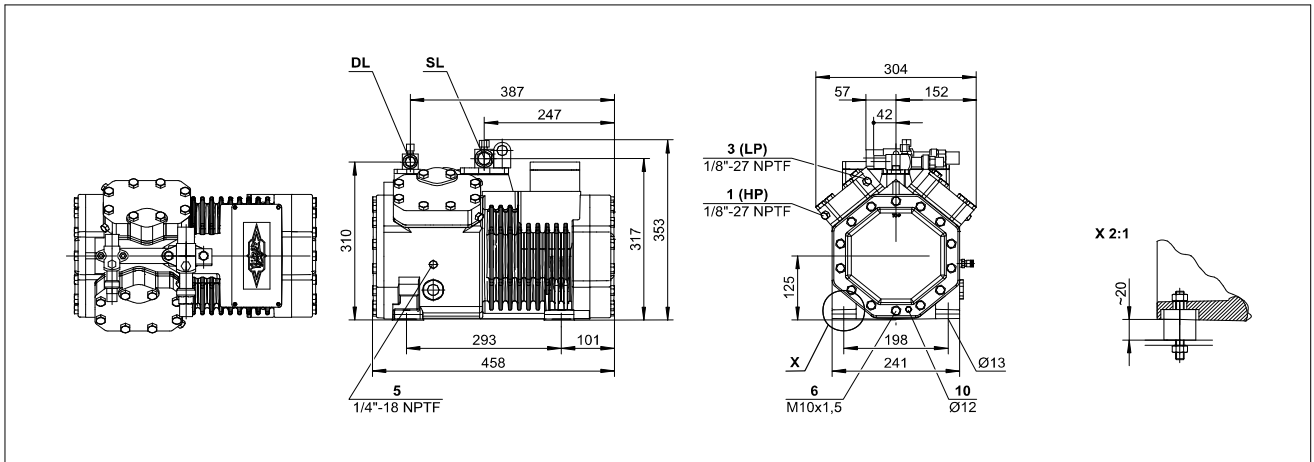
R22
 41.0 kW
 50 Hz / 400 V
 2.0K
 10.0K
 7.0K

T	SST: SCT:	A	B
		-10.0°C	-18.0°C
		45.0°C	55.0°C
	-	7.51 kW	
	- *	--	
	-	7.41 kW	
	.	3.53 kW	
(400V)		8.97 A	
/		380-420V	
/ *		2.10	
.		--	
		174.3 kg/h	
		116.5 °C	

B: (.)! . t : 46,3 °C [30]
A: , - -
A: / (. +)
 * EN12900 (. 20° , 0)



4CC-9.2-40S



- (1450 / 50)	32,48 m3/h
- (1750 / 60)	39,20 m3/h
(.)	4 x 55 mm x 39,3 mm
()	380-420V Y-3-50 Hz
()	20.0 A
()	--
()	82.4 A
(/)	90,5 kg
(/)	19 / 28 bar
(/)	28 mm - 1 1/8"
(/)	22 mm - 7/8"
R134a/R404A/R507A/R407C	tc<55°C: BSE32 / tc>55°C: BSE55 (Option)
R22 (R12/R502)	B5.2 (Standard)
R290/R1270	Clavus G68 (Standard)
	2,00 dm
	0..120 W PTC (Option)
	OLC-K1 (Option, not for R290/R1270)
	Option
	SE-B1
	IP65
	Option
	100-50% (Option)
	Option
	Standard
(+5°C/50°C) @50	73,5 dB(A) @ 50Hz
(-10°C/45°C) @50	72,5 dB(A) @ 50Hz
(-35°C/40°C) @50	(76,0) dB(A) @ 50Hz
@1 (+5°C/50°C) @50	65,5 dB(A) @ 50Hz
@1 (-10°C/45°C) @50	64,5 dB(A) @ 50Hz
@1 (-35°C/40°C) @50	(68,0) dB(A) @ 50Hz

1 = , 4TCS-12.2 12 . . .
 (R22, R407C), (R404A, R507A, R22),
 R134a

2 = , 4TCS-8.2 8 . . .
 (R404A, R507A, R22), R134a.
 " " "

Standard SL(A) = (2 0173SH 4C1145SL), R22:

Varicool SL(B) =

CIC - 4VCS-6.2 (4Z-5.2) 6F-40.2 R22:

ASERCOM - ASERCOM:

- , , , :
 - , , ,

Bitzer

ASERCOM

www.asercom.org.

R404A/R507A

< -20

:
 " / ". , (HR).
 " 5% " (c HR)".

: 50 (IP- 60) R404A.

1

" . "

" . / ":

1 (HP)
 2 (HP)
 3 (LP)

4 | - :
 4b CIC-

5
 6 ()
 7
 8 ()
 9 ,

9a
 9b

10
 11 +
 12 -

13
 16

"Delta-P"