

NOTE

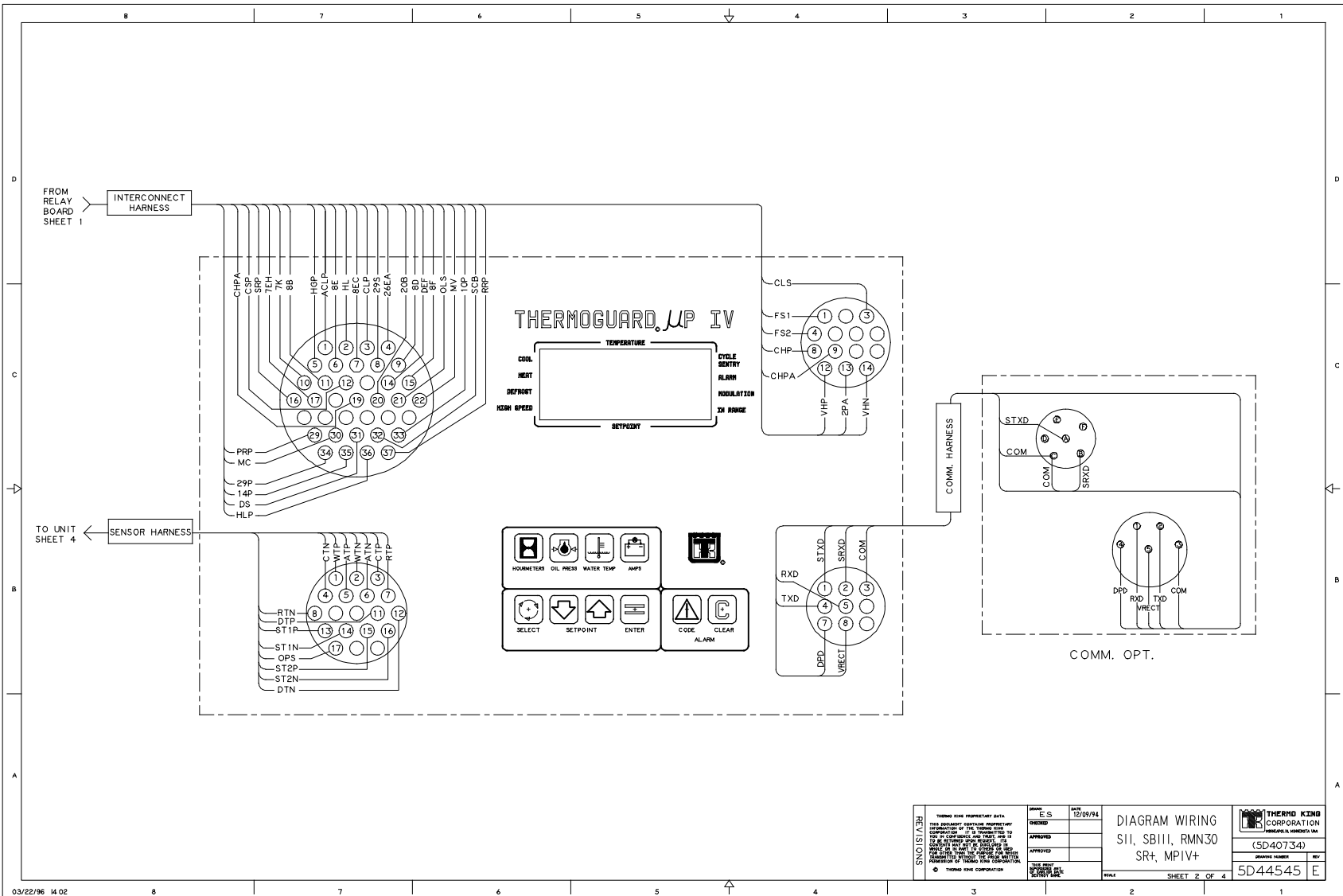
- 1) REMOVE FUSE F15 IF BOSCH ALTERNATOR IS USED ON UNIT.
- 2) PUT F12 IN DATALOG POSITION IF CONTROLLER IS TO BE ON WHEN UNIT IS OFF. (NECESSARY IF DATA IS TO BE LOGGED WHEN UNIT IS OFF AND FOR TIME OF DAY CLOCK.) PUT F12 IN NON DATALOG POSITION IF CONTROLLER IS TO BE SWITCHED ON AND OFF WITH UNIT ON/OFF SWITCH.

REV	DATE	BY	CHKD
1	12/19/94	ES	ES
2	12/22/94	ES	ES
3	12/22/94	SH	SH

THRU DATE PROPRIETARY DATA.  
 THIS DOCUMENT IS THE PROPERTY OF THERMO KING CORPORATION. IT IS LOANED TO YOU BY THERMO KING CORPORATION. IT IS NOT TO BE REPRODUCED OR TRANSMITTED IN ANY FORM OR BY ANY MEANS, ELECTRONIC OR MECHANICAL, INCLUDING PHOTOCOPYING, RECORDING, OR BY ANY INFORMATION STORAGE AND RETRIEVAL SYSTEM. WITHOUT THE WRITTEN PERMISSION OF THERMO KING CORPORATION.

DIAGRAM WIRING  
 S11, SB111, RMN30  
 SR+, MP1V+

 THERMO KING CORPORATION HERRICK, ILLINOIS, USA	NUMBER 5D44545	REV E
---	-------------------	----------



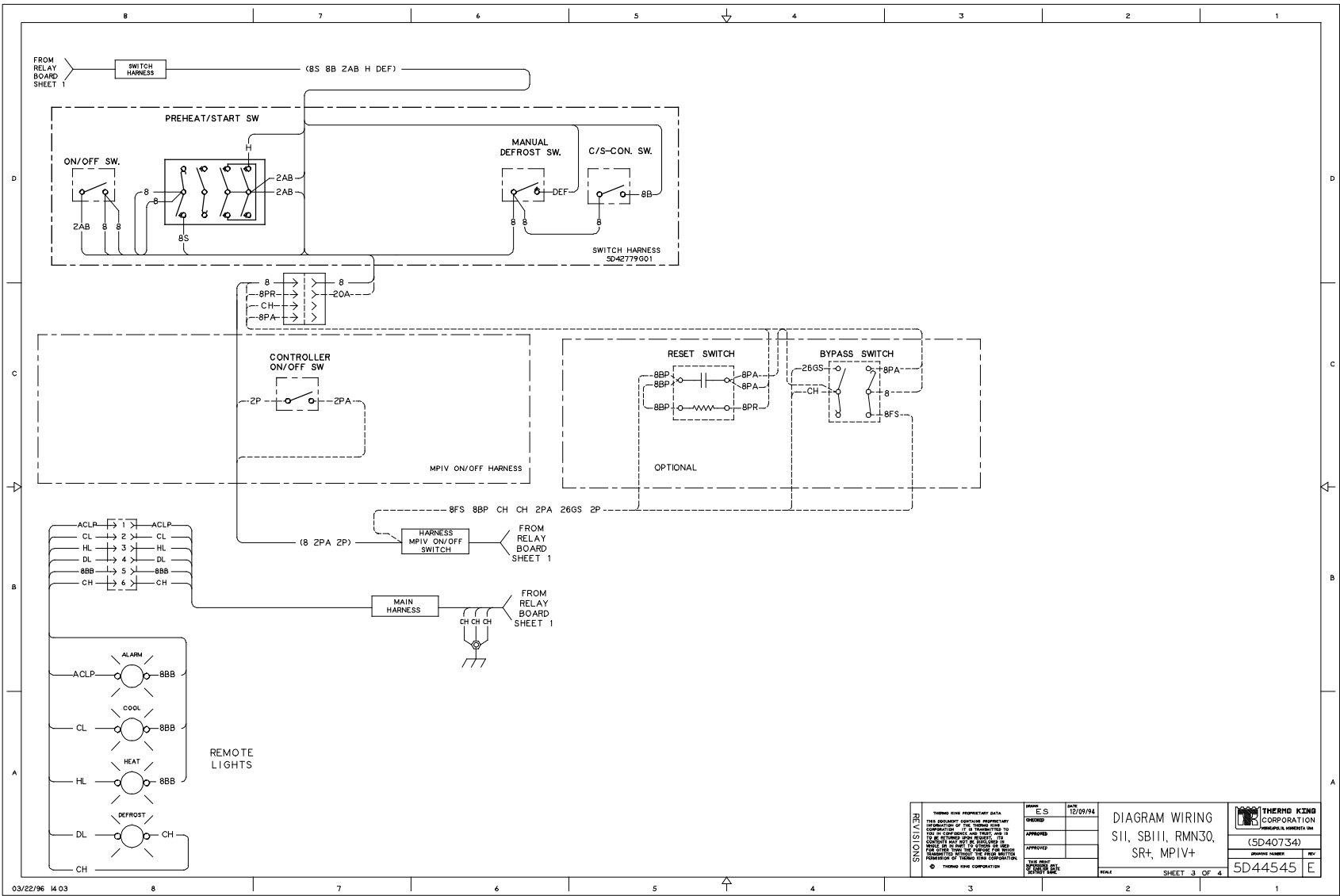
**REVISIONS**

1	ISSUED	10/09/94
2	APPROVED	
3	APPROVED	

DESIGNED BY	ES
DATE	10/09/94
APPROVED	
APPROVED	

DIAGRAM WIRING  
SII, SBIII, RMN30  
SR+, MP IV+

THERMO KING CORPORATION MINNEAPOLIS, MINNESOTA, USA	
(5D40734)	
DRAWING NUMBER	5D44545
REV.	E



03/22/96 M.03

REV	DESCRIPTION	DATE
1	ISSUED FOR PRODUCTION DATA	10/09/94
2	THIS DOCUMENT CONTAINS PROPRIETARY INFORMATION OF THE THERMO KING CORPORATION. IT IS INTENDED TO BE A CONFIDENTIAL AND TRADE SECRET. ANY DISCLOSURE OF THIS INFORMATION TO ANY OTHER PARTY WITHOUT THE WRITTEN PERMISSION OF THERMO KING CORPORATION IS STRICTLY PROHIBITED.	

DIAGRAM WIRING  
SII, SBIII, RMN30,  
SR+, MPiV+

 THERMO KING CORPORATION MINNEAPOLIS, MINNESOTA, USA	
(5D40734)	
DRAWING NUMBER	REV.
5D44545	E

SHEET 3 OF 4

