

LEGEND LOCATION

ALT	-	ALTERNATOR	12
BZ	-	BUZZER	45
DAS	-	DATA ACQUISITION SYSTEM (OPT)	67
DMH	-	DAMPER MOTOR HEATER	4
DPT	-	DISC PRESS TRANS	22
ETV	-	ELECTRIC THROTTLING VALVE	60
FL	-	FUSE LINK	3
MC1	-	ELECTRIC MOTOR CONTACTOR #1	29, 64
MC2	-	ELECTRIC MOTOR CONTACTOR #2	30, 65
HC	-	HEATER CONTACTOR	70
PSM	-	PHASE SENSING MODULE	30, 69
SM	-	STARTER MOTOR	4
SPT	-	SUCTION PRESSURE TRANSDUCER	32
VR	-	VOLTAGE REGULATOR	12

REMOTE LIGHTS (OPTIONAL)

F15	-	BYPASS RES. FOR PRESTOLITE ALT	13
F16	-		28
F17	-		21
F18	-	PWR TO HIGH SPEED SOLENOID	23
F19	-	PWR TO UNLOADER RELAY (HOT GAS)	21
F20	-	MP TO ELECT CLUTCH	49
F21	-	PWR TO ON/OFF SWITCH	2
F22	-	PWR TO MP	1
F23	-	PWR TO REMOTE LIGHTS	26
F26	-	MP TO LIQUID LINE SOL (NOT USED)	49
F27	-	PWR TO LIQUID LINE SOL/PILOT SOL	45
F28	-	MP TO MV	52
F29	-	MP TO UNLOADER (NOT USED)	49
F30	-	MP TO WATER VALVE (NOT USED)	49
F31	-	MP TO MOD VALVE (NOT USED)	49
F32	-	MP TO ECON BYPASS (NOT USED)	49

FUSES

F1	-	MP TO HIGH SPD RELAY/ELECT HEAT	49
F2	-	MP TO DEFROST RELAY	19
F3	-	POWER TO DEFROST RELAY/DAMPER	18
F4	-	MP TO RUN RELAY	14
F5	-	MP TO HOT GAS SOLENOID	49
F6	-	MP TO HEAT RELAY/PILOT SOL	49
F7	-	MP TO START RELAY	7
F8	-	MP TO PRE-HEAT RELAY	9
F9	-	MAIN CONTROL POWER	3
F10	-		49
F11	-	SHUNT TO CONTROLLER	3
F12	-	POWER TO MP	3
F13	-	SHUNT TO CONTROLLER	3
F15	-	BYPASS RES. FOR PRESTOLITE ALT	13
F16	-		28
F17	-		21
F18	-	PWR TO HIGH SPEED SOLENOID	23
F19	-	PWR TO UNLOADER RELAY (HOT GAS)	21
F20	-	MP TO ELECT CLUTCH	49
F21	-	PWR TO ON/OFF SWITCH	2
F22	-	PWR TO MP	1
F23	-	PWR TO REMOTE LIGHTS	26
F26	-	MP TO LIQUID LINE SOL (NOT USED)	49
F27	-	PWR TO LIQUID LINE SOL/PILOT SOL	45
F28	-	MP TO MV	52
F29	-	MP TO UNLOADER (NOT USED)	49
F30	-	MP TO WATER VALVE (NOT USED)	49
F31	-	MP TO MOD VALVE (NOT USED)	49
F32	-	MP TO ECON BYPASS (NOT USED)	49

RELAYS

AIR INTAKE HTR RELAY	6		
DSR	-	DOOR SWITCH RELAY	60
K1	-	FUEL SOL PULL-IN	15, 16
K2	-	HIGH SPEED RELAY	23
K3	-	DAMPER RELAY	18
K4	-	PREHEAT RELAY	7
K5	-	START RELAY	6
K7	-	RUN RELAY	13
OL	-	OVERLOAD RELAY	28, 65, 66

SENSORS

-	AMBIENT TEMP	58	
-	COIL TEMP	59	
DPT	-	DISCHARGE PRESS TRANSDUCER	61
DASS1	-	DAS SENSOR	64
DASS2	-	DAS SENSOR	65
DASS3	-	DAS SENSOR	66
DASS4	-	DAS SENSOR	67
DASS5	-	DAS SENSOR	67
DASS6	-	DAS SENSOR	68
-	DISCHARGE AIR	57	
-	ENG. WATER TEMP	59	
FW	-	FLYWHEEL	55
-	RETURN AIR	58	
-	SHUNT	3	
SPT	-	SUCTION PRESS TRANSDUCER	62

SOLENOIDS

DM	-	DAMPER	20
FSH	-	FUEL SOLENOID HOLD	14
FSP	-	FUEL SOLENOID PULL IN	15
HS	-	HIGH SPEED	23
PS	-	PILOT	43
SS	-	STARTER	5
HGS	-	HOT GAS SOLENOID	43

SWITCHES

CLS	-	COOLANT LEVEL	55
D/E 1	-	DIESEL ELECT. SW. 1	4
D/E 2	-	DIESEL ELECT. SW. 2	12
DMS1,2	-	DAMPER MOTOR SW.	19, 20
DS	-	DOOR SW.	61
DTS	-	DAMPER MOTOR TEMP SW	22
FLS	-	FUEL LEVEL SWITCH (OPT)	52
FPS	-	FUEL PRESS SWITCH	52
HPCO1	-	HIGH PRESSURE CUTOFF DIESEL	15
HPCO2	-	HIGH PRESSURE CUTOFF ELECT	28
LOPS	-	LOW OIL PRESSURE SW.	9
MP SW	-	CONTROLLER ON/OFF	1
OLS1	-	OIL LEVEL	54
ON/OFF	-	UNIT SWITCH-(SLEEP OPT)	3, 51

JUMPERS

TP5	-	COLD START ENABLED	50
TP6	-	SCTY CODE BYPASS	51
TP7	-	MODULATION ENABLED	48
TP8	-	ELECT. ENABLED	48
TP14	-	SMX/SL SELECT	48
TP15	-	HIGH CAP SMX/SL SELECT	48
TP16	-	YANMAR ENG SELECT	48
TP17	-	REM. CTL SELECT	48
TP18	-	SCREW COMP. SELECT	48
TP20	-	DAS SELECT	48

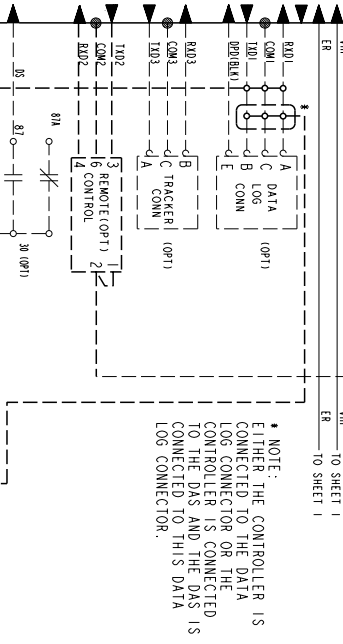
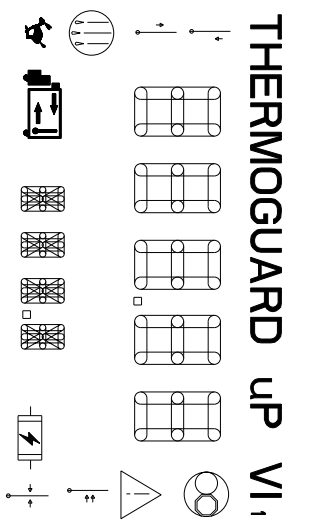
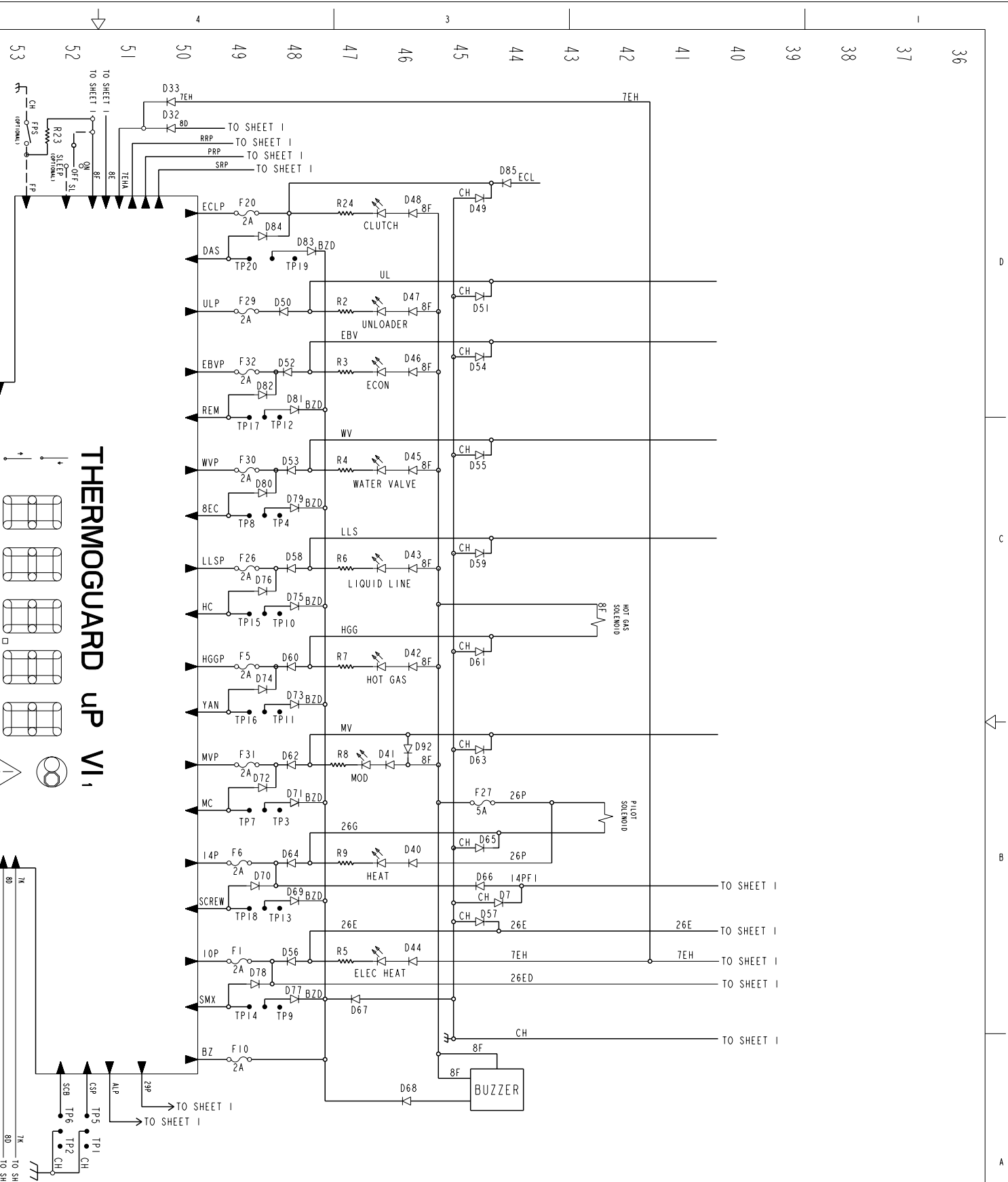
**THE THERMO KING CORPORATION**  
 MINNETONKA, MINNESOTA, USA  
 (5050737)  
**DIAGRAM - SCHEMATIC**  
**SL-300 50 SR MPVI**  
**W/ YANMAR & ETV**  
 SHEET 1 OF 2

DATE	06/08/98
CHECKED	ES
APPROVED	SH
DATE	06/08/98
CHECKED	ES
APPROVED	SH

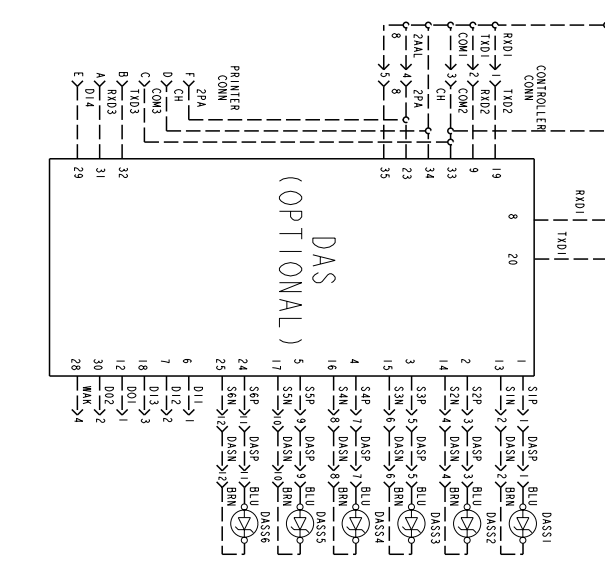
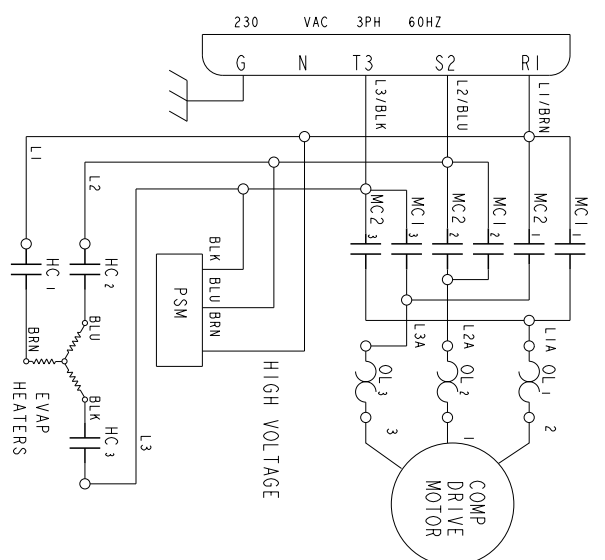
THIS DOCUMENT CONTAINS PROPRIETARY INFORMATION OF THE THERMO KING CORPORATION. IT IS TO BE KEPT CONFIDENTIAL AND NOT TO BE DISCLOSED IN ANY MANNER WITHOUT THE WRITTEN PERMISSION OF THE THERMO KING CORPORATION.

NO.	DATE	BY	DESCRIPTION
73671	ES	06/08/98	SH
74469	ES	02/11/99	SH
75282	JJB	06/11/99	SH

26P WAS LLSP. DEL. OLC SWITCH ADDED. DAS, CHG. 3A FUSES TO 2A.  
 REVISE TITLE, SL 300 WAS SL 400



NOTE: THE CONTROLLER IS EITHER THE CONTROLLER IS CONNECTED TO THE DATA LOGS CONNECTOR OR THE CONTROLLER IS CONNECTED TO THE DAS AND THE DAS IS CONNECTED TO THIS DATA LOGS CONNECTOR.



THERMO KING PROPRIETARY DATA THIS DOCUMENT CONTAINS PROPRIETARY INFORMATION OF THE THERMO KING CORPORATION. IT IS TRANSMITTED TO YOU IN CONFIDENCE AND TRUST, AND IS TO BE RETURNED UPON REQUEST. ITS CONTENTS MAY NOT BE DISCLOSED IN WHOLE OR IN PART TO OTHERS OR USED FOR OTHER THAN THE PURPOSES FOR WHICH TRANSMITTED WITHOUT THE PRIOR WRITTEN PERMISSION OF THERMO KING CORPORATION. THERMO KING CORPORATION		DRAWN: ES CHECKED: APPROVED: APPROVED:	DATE: 06/08/98 SCALE: NONE SHEET 2 OF 2	DIAGRAM-SCHEMATIC SL-300 50 SR MPVI W/ YANMAR & ETV	THERMO KING CORPORATION WINNEPICO, WISCONSIN USA DRAWING NUMBER: 5D50756 REV: C
--	--	---	---	---	--