

# TUNAP A/C Service



Fresh and clean air in your car



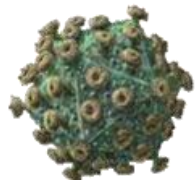
**Contra Sept® 180** Cleaning of the evaporator

**Contra Sept® 181 Air-Co** Cleaning of the air ducts

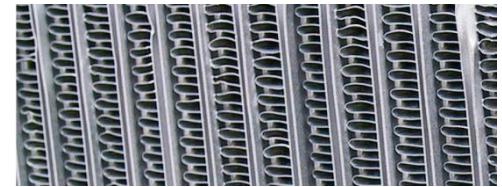
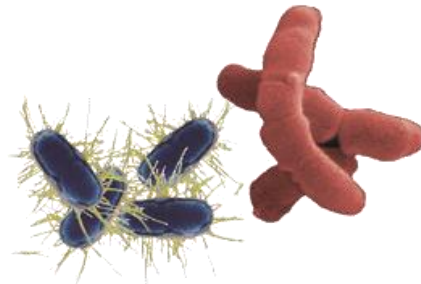
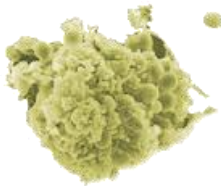
# Unpleasant odours in the A/C

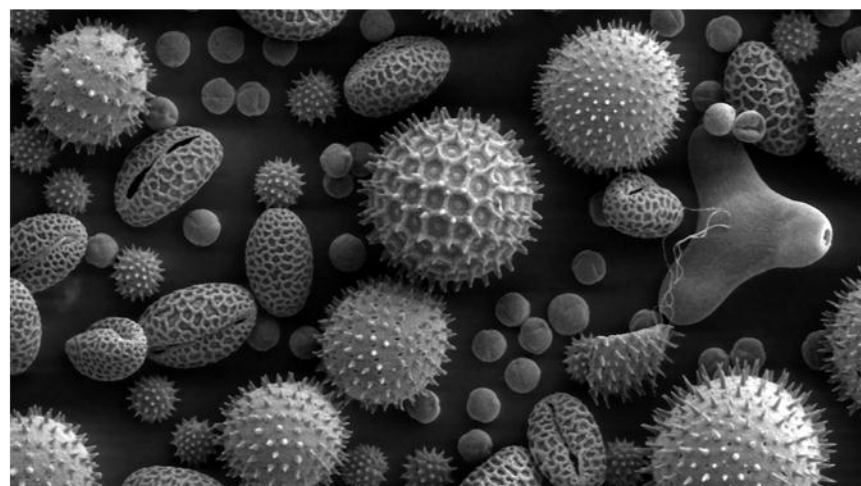
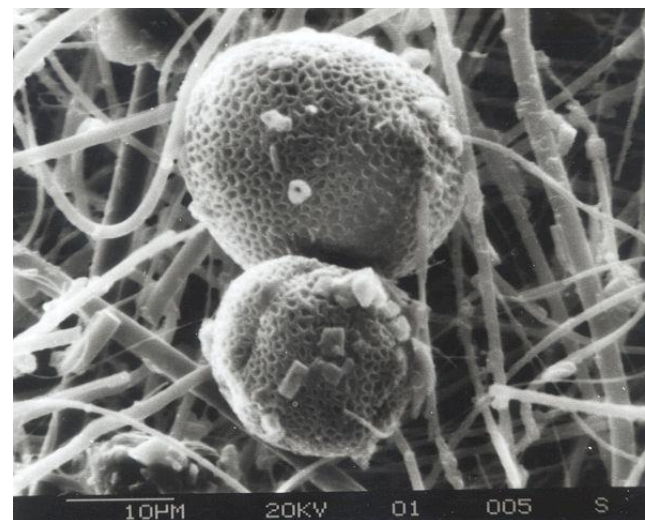
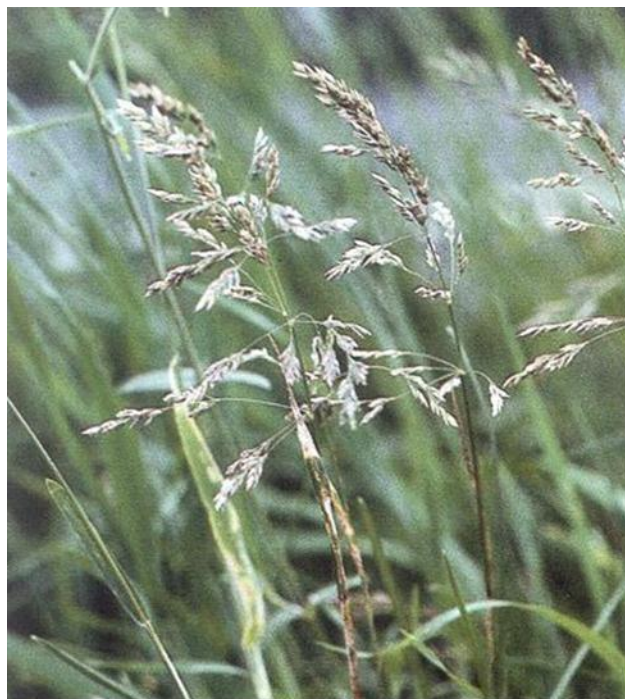
- Narrow standing cooling fins of the evaporator
- Humidity and water on the cooling fins
- Dust and other dirt

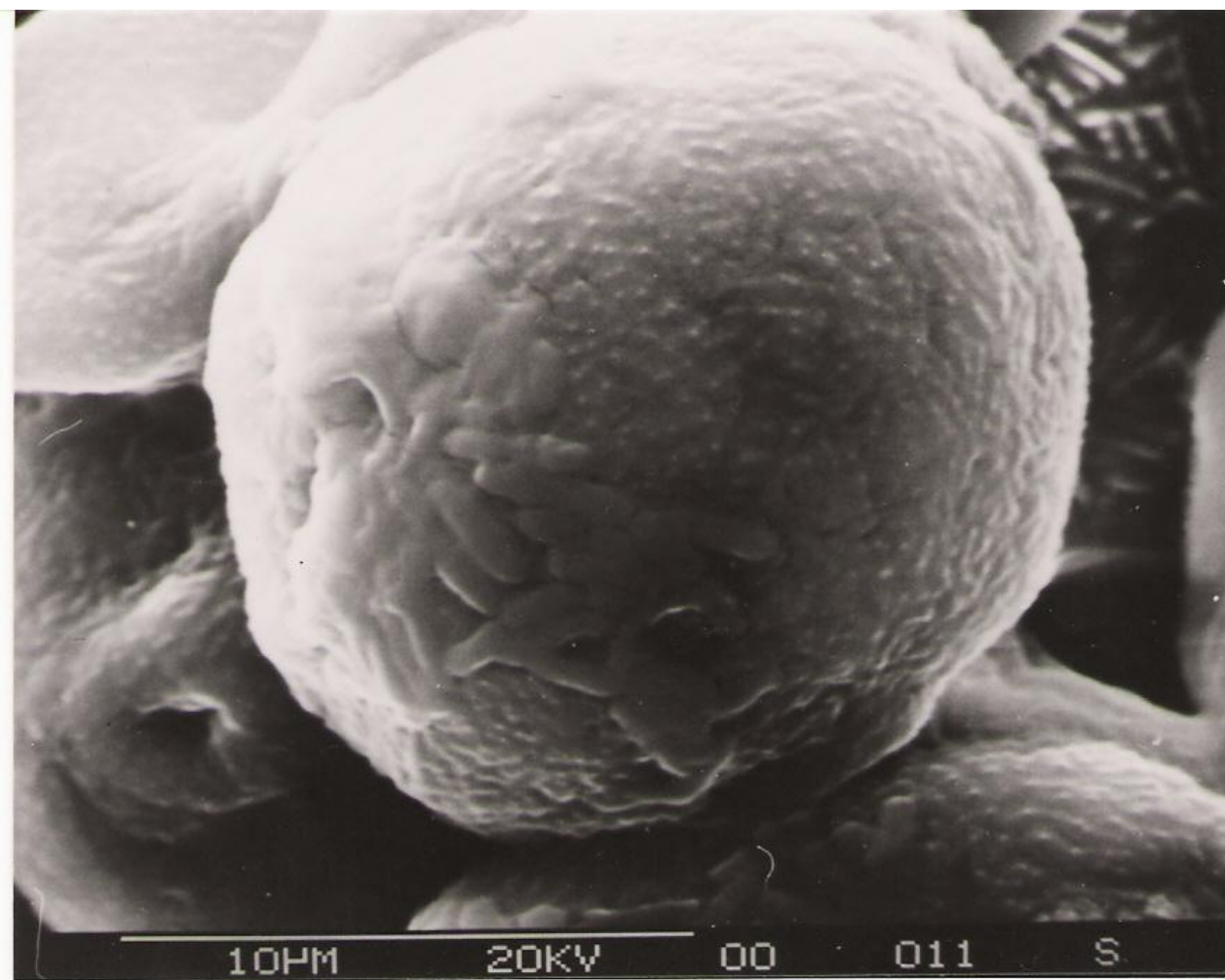
→ Ideal culture medium for:



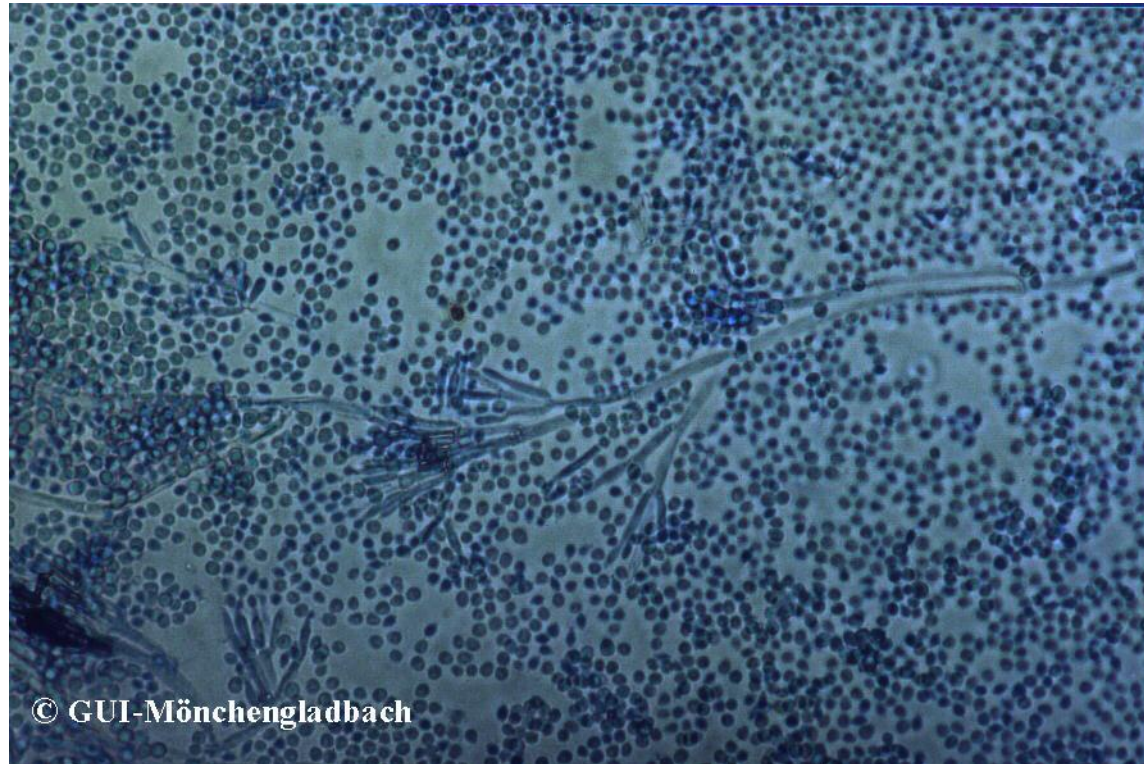
- bacteria
- fungi
- micro-organisms



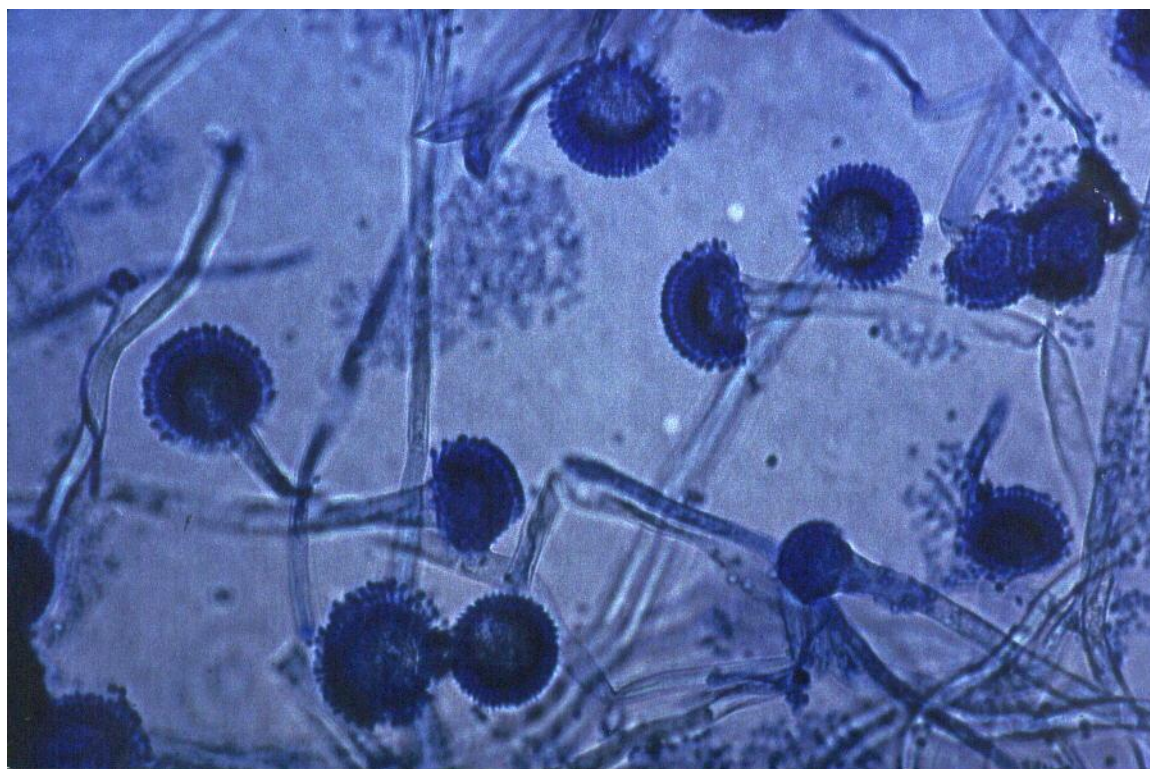






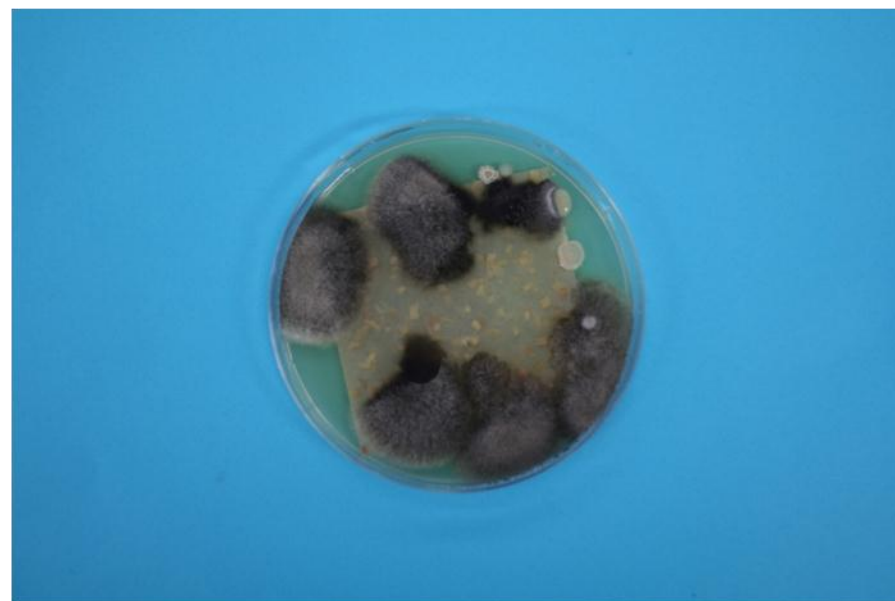
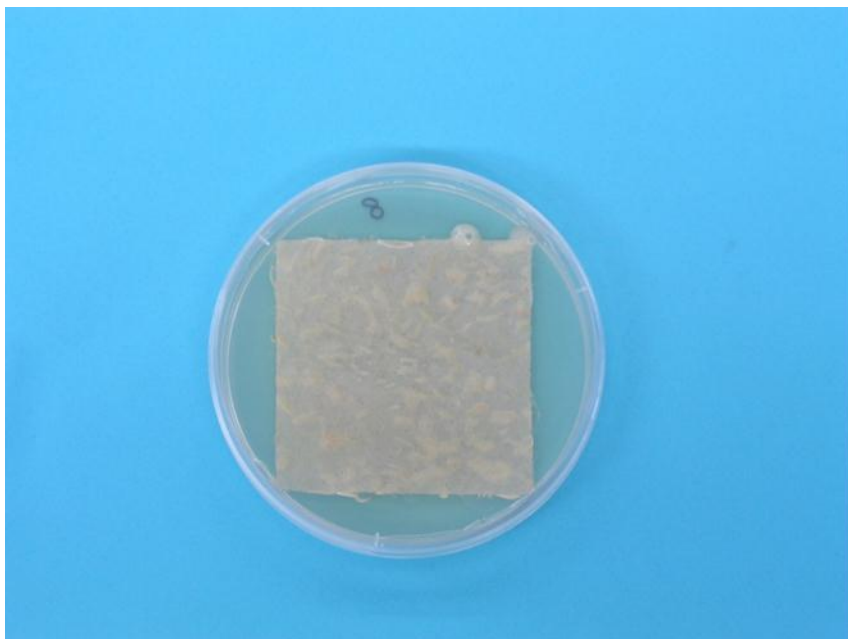


**Penicillium chrysogenum**



**Aspergillus fumigatus**

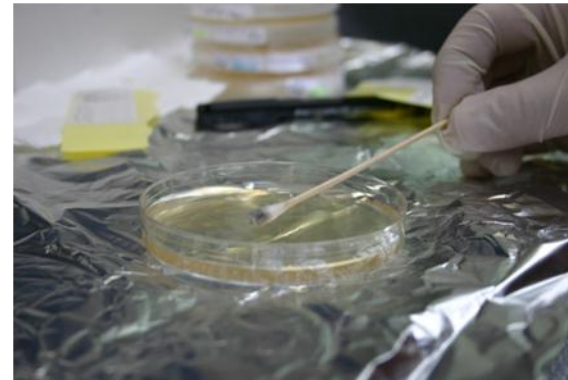


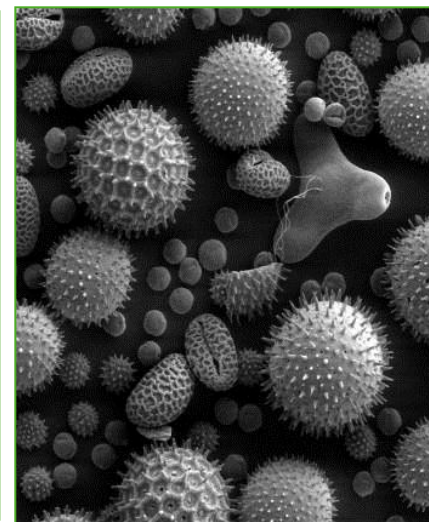
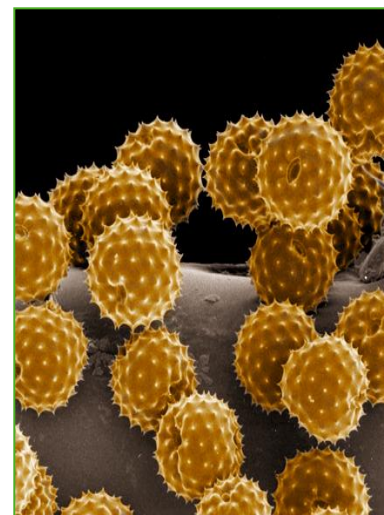
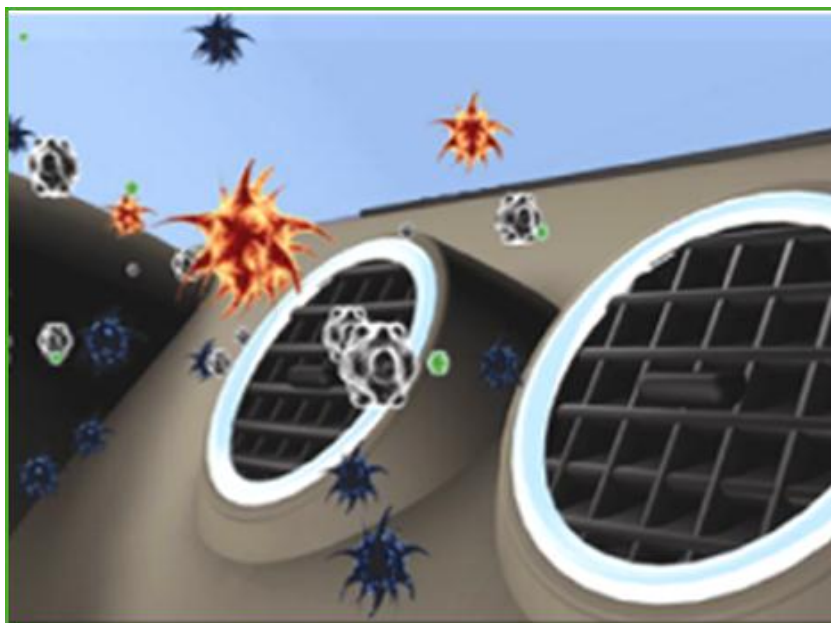


## Reinigung Zuluftkanal



Nach der Reinigung der Kanäle und Zuluftöffnungen zeigt sich eine signifikante Keimreduktion bei allen Fahrzeugen.





TUNAP A/C service especially suitable for ...

- infants
- allergy sufferers
- asthmatics



# The TUNAP - logic



The cleaning liquid is sprayed onto the evaporator with a pressure cup spray gun.



Due to the spray pressure not only the surface will be moistened but the whole evaporator will be rinsed thoroughly.



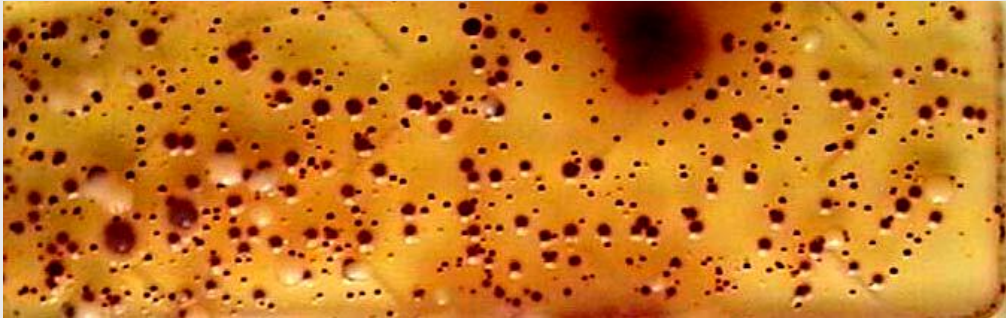
## Advantages:

- Fast and targeted application (directly onto the evaporator)
- Strong mechanical rinsing and cleaning effect
- Instant checking of the condensation water drain
- Quick elimination of odour cause
- Long-term protection against bacteria
- Prevents allergic reactions
- No perfume substances
- No sticky residues

# Efficiency study - Contra Sept®



Before



After



# Contra Sept® products



## Cleaning of the evaporator



Contra Sept® 180  
pressure cup spray gun +  
probe

## Cleaning of the air ducts



Contra Sept® 181 Air-Co  
aerosol + plastic probe

# Application



	<b>Cleaning of the A/C</b>	<b>Cleaning of the air ducts</b>
<b>cleaner</b>	Contra Sept® 180	Contra Sept® 181 Air-Co
<b>What is being cleaned?</b>	evaporator, case and air ducts	pollen filter case, air ducts
<b>How is it cleaned?</b>	pressure cup spray gun + probe	aerosol + plastic probe
<b>cleaning type</b>	elimination of the cause (fungi, bacteria, micro-organisms)	prophylactic
<b>costs</b>	+	++
<b>cleaning cycle (recommendation)</b>	once – twice a year	with every change of the pollen filter