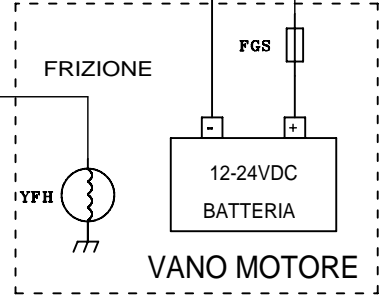


MOD.	VENT. COND.	VENT. EVAP.
SFZ238	1	2
SFZ248	1	3
SFZ258	2	4

FUSE	AMP.
FSS	10
FFR	10
FFS	10
F6	20
F6/1	20
F8	20
F9	20
F10	20
F11	20
FR	5
FB	5

SOTTOCHIAVE



MODELLO
 SFZ238S...-R...
 SFZ248S...-R...
 SFZ258S...-R...

REV.nr.
 02 ELIMINATO DIODO ESTERNO
 DATA:
 16-04-2007

Approvato
 Soncini

DISSEGNO nr.
 FZ4002
 Disegnato
 Soncini

Approvato
 Soncini

FOGLIO nr.:
 1 DI 1
 DATA:
 06-04-2006