



Genuine Parts Catalog

The finest parts engineered with unmatched quality and reliability.



We've got you

Every Genuine Thermo King Part is backed



Nationwide Warranty

Thermo King provides unparalleled service coverage through a nationwide warranty program. No matter where you are, your unit is covered!

24-Hour Mobile Service

Thermo King's Uptime trucks deliver expert mobile service 24/7, making sure you're never alone out on the road.



Expert Service and Support at over
200 Dealers Nationwide!

Covered!

by the Thermo King Dealer Network



Access to the Full Line of Genuine Parts

Every Thermo King dealer stocks a large inventory of Genuine Thermo King Parts and has easy online access to the complete line in order to get you the part you need, when you need it.



Unequaled Nationwide Support

With over 200 dealer locations nationwide, there are always factory-trained experts nearby, offering the fastest service to get you back on the road.



Table of Contents



Maintenance.....4

Belts	X
Filters	X



Electrical 16

Alternators.....	X
Starters.....	
Controllers	X
Switches / Sensors.....	X
Components	X



Engines39

New and Remanufactured Engines	X
Water Pumps.....	X
Components	X



Compressors45

New and Remanufactured Compressors	X
Components	X



Refrigeration55

Driers.....	X
Valves.....	X
General Components.....	X



Drives & Fans65

Fans.....	X
Couplings / Shafts	X



Structural 71

Accessories75

Whats inside!

In the over 70 years since Joe Numero and Frederick Jones developed the first refrigeration unit, Thermo King engineers and technicians have learned a lot of 'tips' that will help you keep your units running smoothly. Look for "Tech Tips" throughout the catalog and use what they've learned to your advantage!



TECH TIP

Every time you change an alternator, we recommend installing a new drive belt to ensure maximum uptime before the next related service.

All Thermo King parts work together to make your unit perform its best. Watch for "Don't Forget" tags to help identify additional parts you may need.



Don't forget:

To ask your dealer for the correct gaskets to match your solenoid!

For 416383

O-Ring..... 33-2230

For 449181

Plunger..... 44-8198

Boot..... 91-3095

Thermo King parts were specifically designed for your Thermo King unit – do not accept imitations! Watch for the "Genuine Thermo King Edge" sections to learn about advantages of Thermo King parts over the competition.

GENUINE THERMO KING EDGE

Belts
Truck, Trailer and TriPac

Genuine Thermo King belts are designed and built especially for your system and its specific temperature requirements – you can depend on the belt to withstand the heat specific to your application.

Imitation belts may 'fit' your unit but are not designed to adhere to its specifications, including cross section length, materials and performance expectations. When you purchase a Genuine Thermo King belt, you can be confident you have the best performing product for your application. Accept no substitutes – choose Genuine Thermo King.



Ask your Dealer

Thermo King offers over 70,000 parts, not all of which would fit into one catalog. Take advantage of our nationwide dealer network and ask your local dealer for more details on what parts are right for your unit!





Genuine Thermo King
Maintenance

Thermo King offers the highest quality maintenance items on the market. All products have been carefully designed to keep your Thermo King equipment operating at full efficiency and capacity

Complete parts lineup available at your Thermo King dealer

Belts

Premium materials mean superior temperature and chemical resistance, resulting in longer belt life. Genuine Thermo King Belts are specifically designed for our application and we demand the highest quality in our materials, resulting in superior belt life. Before you accept an imitation belt, you should ask yourself if it has been specifically designed for your unit and if the risk is worth taking.

Top Fabric:

Increases flexibility, provides wear resistance on backside idlers, and joins the belt together

Envelope:

Provides a long wearing driving surface and the proper coefficient of friction.

Insulation:

This component surrounds the tensile cords to ensure the best possible bond

Cogged:

Cogs provide increased flexibility for specific types of belts and applications

Cushion/Fiber Loading:

Provides the necessary support for the cords, preventing distortion and collapsing of the belt. It provides unidirectional support which helps resist abrasion, reduces noise and controls the coefficient of friction.

Tensile Cord:

The material that carries the load of the belt. Constructed of the strongest material to reduce the possibility of shrinkage or stretch.

**GENUINE
THERMO KING
EDGE**

Genuine Thermo King belts are designed and built especially for your system and its specific temperature requirements – you can depend on the belt to withstand the heat specific to your application.

Imitation belts may 'fit' your unit but are not designed to adhere to its specifications, including cross section length, materials and performance expectations. When you purchase a Genuine Thermo King belt, you can be confident you have the best performing product for your application. Accept no substitutes – choose Genuine Thermo King.



Belts
Truck, Trailer and TriPac



Application Chart (Trailer Belts)

Part	Description	Pkg Qty	SB II	SB III	SB-100	SB-110	SB-190	SB-200	SB-210	SB-300	SB-310	SB-400	Sentry	DE	SB	Super II
78-629	Belt, Engine to Idler	10	■	■	■	■	■	■	■	■	■	■		■	■	
78-603	Belt, Fan	10	■	■	■	■	■	■	■	■	■	■		■	■	
78-929	Belt, Alternator	10		■	■		■						■			■
78-835	Belt, Fan Drive	10														■
78-1341	Belt, Alternator	1		■		■		■	■	■		■		■	■	■
78-604	Belt, Engine to Idler	10	■	■												
78-757	Belt Set, Engine to Idler	10											■			
78-1000	Belt, Fan Drive	1														■
78-471	Belt, Alternator	10	■										■			■
78-785	Belt Set, Compressor Drive	1	■	■				■	■						■	
78-1360	Belt	1				■		■	■			■			■	
78-666	Belt Fan Drive	10											■			
78-751	Belt, Alternator	1	■	■									■			■
78-844	Belt, Fan	1		■				■	■						■	
78-1340	Belt, Fan & Water Pump	1		■				■	■						■	■
78-1011	Belt, Water Pump	1		■									■			■
78-845	Belt, Alternator	1		■				■	■						■	

Multi-Temp ■



Application Chart (Truck Belts)

Part	Description	Pkg Qty	JDII	KDII	MDII	MD-100	MD-200	MD-300	RDII	TDII	TS-200	TS-300	TS-500	TS-600	Spectrum TS	T-600/T-800	T-1000	Spectrum
78-977	Belt, Engine	1		■	■													
78-1351	Belt, Engine to Motor	1									■	■	■					
78-1083	Belt, Engine	1		■	■													
78-1067	Belt, Motor to Compressor	1											■					
78-936	Belt, Motor to Jackshaft	1		■	■	■	■	■										
78-1353	Belt, Engine to Motor	1												■				
78-1263	Belt, Motor to Compressor	1												■				
78-684	Belt, Evaporator Fan	1		■	■	■	■	■		■								
78-1129	Belt, Poly (VK8)	1									■	■						
78-700	Belt, Alternator to Evap Fan	1		■	■	■	■	■										
78-766	Belt, Alternator to Evap Fan	1							■	■								
78-800	Belt, Evap Fan to Compressor	1							■									
78-899	Belt, Motor (Jackshaft to Comp.)	1							■									
78-1031	Belt, Engine to Compressor	1							■									
78-898	Belt, Motor (Jackshaft to Comp)	1		■					■	■								
78-900	Belt, Engine to Compressor	1							■									
78-1026	Belt, Water Pump	1							■									
78-679	Belt, Alternator	10	■		■													
78-896	Belt, Engine to Compressor	1							■	■								
78-1366	Belt, Engine	1				■	■	■										
78-1051	Belt, Engine to Compressor	1							■	■								
78-698	Belt, Evap Fan to Compressor	1							■	■								
78-1103	Belt, Alternator	1	■															
78-1350	Belt, Engine to Motor	1													■			
78-679	Belt, Water Pump	10	■	■	■													
78-1012	Belt, Water Pump	1	■	■	■	■	■	■			■	■						
78-1492	Belt, Water Pump	1				■	■	■			■	■						
78-1736	Belt, Water Pump	1											■	■	■			
78-1688	Belt, Engine to Motor	1															■	
78-1681	Belt, Motor to Compressor	1															■	
78-1669	Belt, Engine to Motor	1																■
78-1689	Belt, Motor to Compressor	1																■

Multi-Temp ■



Application Chart (TriPac Belts)

Part	Description	Pkg Qty	
78-1492	Belt, Water Pump	1	■
78-1543	Belt, Compressor to Alternator	1	■
78-1634	Belt, Compressor & Alternator	1	■
78-1484	Belt, Compressor & Alternator	1	■
78-1655	Belt, Engine to Compressor	1	■
78-1664	Belt, Compressor & Alternator	1	■

TriPac



TECH TIP

Any time you need to change a single belt on a unit, always closely inspect all of the other belts and advise the customer of their condition. Remember - the entire drive system is only as good as the weakest link.

Complete parts lineup available at your Thermo King dealer

Filters

Genuine Thermo King Filters are specifically designed for our application and we demand the highest quality in:



Construction: With a design that is created uniquely for our application and can meet the requirements of our customers unit needs

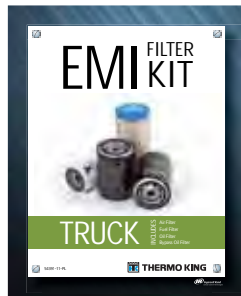


Capacity: The life of the filter that can keep up with our Extended Maintenance Intervals (EMI) that is specific to the Thermo King unit



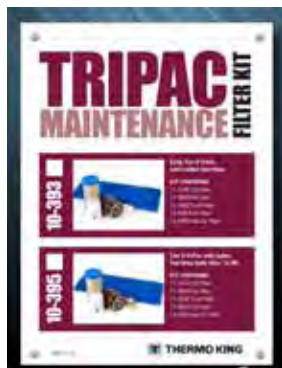
Efficiency: The maximum amount of particles that can be captured in the filter to ensure your engine keeps running for a long life

EMI Filter Kits (Truck & Trailer)



	10-416	10-417
Oil Filter	11-6182	11-9182
ByPass Oil Filter	11-9321	
Air Filter	11-9059	11-9300
Fuel Filter	11-9341	11-9342

EMI Filter Kits (TriPac)



	10-393 (TriPac w/rubber fuel lines)	10-395 (TriPac w/nylon fuel lines built after 12/06)
Oil Filter	11-6182	11-6182
Air Filter	11-9059	11-9059
Air Filter	13-658	13-658
Fuel Filter	11-9342	11-9342
Fuel Filter	13-649	13-864

EMI 3000 Conversion Kits

EMI conversion kits are available if your Thermo King trailer is equipped with pre-2001 filters and you want to convert to the EMI 3000 filters



Engine Conversion	Part #
Converts DI 2.2, SE 2.2 and TK 486 to spin on fuel/water filter	10-325
Converts SE 2.2 engines to EMI 3000 filters	90-329
Converts TK 482/486 engines to EMI 3000 filters	90-330
Converts TK DI 2.2, se 2.2 or TK 482/486 engines to EMI 3000 air filters	90-332

Air Filters



The Genuine Thermo King EMI 3000 Air Filter offers:

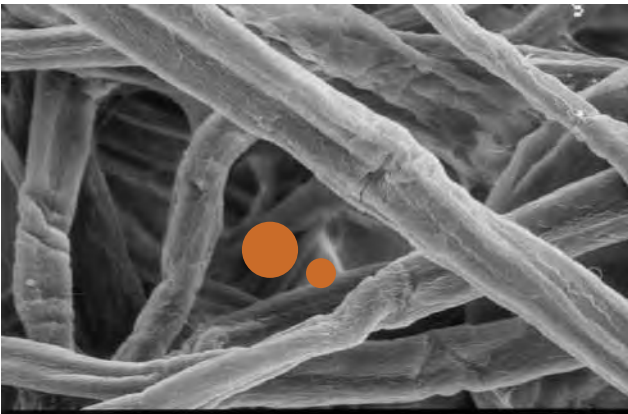
- ✓ Built in cyclonic separator that filters heavier particles which get automatically discharged through the evacuation valve
- ✓ Built in sonic choke for intake silencing
- ✓ High efficiency patented filter design developed for use on Thermo King units to support our extended maintenance interval
- ✓ Unique and trademarked filter media specially designed for Thermo King units and constructed for on-highway application
- ✓ Special media outperforms standard cellulose media by delivering higher efficiency and capturing more contaminant
- ✓ Thermo King filter media holds up to five times more contaminant than standard cellulose air filters

Complete parts lineup available at your Thermo King dealer

EMI 3000 Air Cleaner Assembly & Filter System

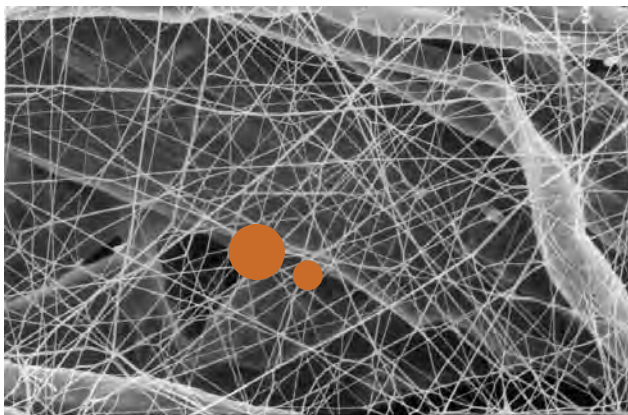
Thermo King High Efficiency Filtration

The filter media in the Thermo King 11-9300 causes submicron contaminant to load on the surface rather than dispersing throughout the depth of the filter where there is less area for the air to flow. Therefore, in on-highway applications, where the contaminant is primarily soot (submicron in size), the Thermo King air filter has less restriction than filters with cellulose media. The smaller, interfiber spaces of filter media deliver higher efficiency and capture more contaminant.



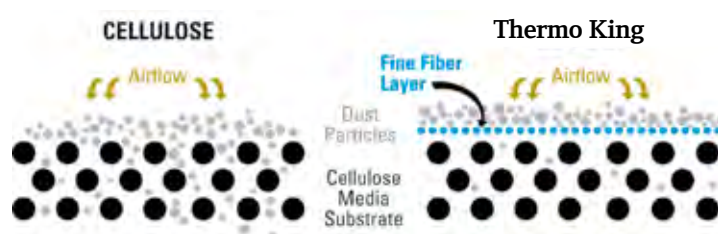
Orange circles represent the diameter of a 2µ and a 5µ particle.

The fibers in the our filter media have submicron diameter and small interfiber spaces, which result in more contaminant being captured on the surface of the media and lower restriction.



Cellulose fibers are larger and have larger spaces between the fibers, causing contaminant to load in the depth of the media and plug the airflow path; resulting in higher restriction and less capacity.

Filter Media Comparative Cross Section



Application Chart (Trailer Air Filters)

Case	Single	Qty	Desc	SB II	SB III	SB-100	SB-110	SB-190	SB-200	SB-210	SB-300	SB-310	SB-400	Sentry	DE	SB	Super II
12-9300		12	EMI3000 Air Filter		■	■	■		■	■	■	■	■		■	■	■
	11-9300	1	EMI3000 Air Filter		■	■	■		■	■	■	■	■		■	■	■
12-7400		9	Air Filter	■	■	■		■	■		■			■			■
	11-7400	1	Air Filter	■	■	■		■	■	■	■			■			■

Multi-Temp ■

Application Chart (Truck Air Filters)

Case	Single	Qty	Desc	JDII	KDII	MDII	MD-100	MD-200	MD-300	RDII	TDII	TS-200	TS-300	TS-500	TS-600	Spectrum TS	T-600/T-800	T-1000	Spectrum
	11-9059	1	Primary Air Element				■	■	■	■	■	■	■	■	■	■	■	■	■
	11-7234	1	Air Filter	■	■	■				■	■								

Application Chart (TriPac Air Filters)

Case	Single	Qty	Desc	TriPac
	11-9059	1	Primary Air Element	■
	13-658	1	Evap Air Filter	■

Fuel Filters



The Genuine Thermo King EMI 3000 Fuel Filter offers:

- ✓ Coated and lined can to prevent corrosion
- ✓ Spring insulator to reduce electrolysis and corrosion inside the can
- ✓ Engine life is extended by avoiding the risk of corrosion caused by water
- ✓ Pickup tube inside the filter that returns water to fuel tank so water does not have to manually be drained from the filter and eliminates the risk that water enters the fuel pump and injectors
- ✓ Patented design that automatically removes potentially damaging water from the filter sump and returns it back to the fuel tank to be drained
- ✓ High strength gasket that resists heat and distortion for extended seal life
- ✓ Heavy-duty baseplate with tuck-lock seam that resists seal leakage due to pressure distortion
- ✓ High strength cellulose/glass media that offers superior contaminate filtering capacity and efficiency
- ✓ Water stripping media that removes water before it can damage the fuel system and extends life of engine by avoiding corrosion caused by water
- ✓ Heavy-duty, epoxy coated housing is impervious to cracking and corrosion

Application Chart (Trailer Fuel Filters)

Case	Single	Qty	Description	SB II	SB III	SB-100	SB-110	SB-190	SB-200	SB-210	SB-300	SB-310	SB-400	Sentry	DE	SB	Super II
12-7264		12	Water filter sep.		■									■			■
	11-7264	1	Water filter sep.		■									■			■
12-6285		12	Fuel Filter		■									■			■
	11-6285	1	Fuel Filter		■									■			■
12-9342		12	EMI3000 Fuel Sep.		■	■	■	■	■	■	■	■	■		■	■	■
	11-9342	1	EMI3000 Fuel Sep.		■	■	■	■	■	■	■	■	■		■	■	■
12-9098		12	Fuel Filter	■	■										■		
	11-9098	1	Fuel Filter	■	■										■		
12-9097		12	Fuel Filter	■											■		
	11-9097	1	Fuel Filter	■											■		

Multi-Temp ■

Application Chart (Truck Fuel Filters)

Case	Single	Qty	Description	JDII	KDII	MDII	MD-100	MD-200	MD-300	RDII	TDII	TS-200	TS-300	TS-500	TS-600	Spectrum TS	T-600/T-800	T-1000	Spectrum	
12-9098		12	Fuel Filter	■	■	■				■	■	■	■	■	■	■				
	11-9098	1	Fuel Filter	■	■	■				■	■	■	■	■	■	■				
12-9341		12	Fuel Filter		■	■	■	■	■	■	■	■	■	■	■	■	■	■	■	■
	11-9431	1	Fuel Filter		■	■	■	■	■	■	■	■	■	■	■	■	■	■	■	■

Application Chart (TriPac Fuel Filters)

Case	Description	TriPac
13-649	Fuel Filter	■
13-864	Fuel Filter	■

Oil Filters



The Genuine Thermo King EMI 3000 Oil Filter offers:

- ✓ High efficiency full-flow element developed for use on Thermo King units to support the extended maintenance interval and provide clean lubricant to the engine
- ✓ Designed specifically for Thermo King applications with maximum capacity and efficiency to prevent excessive engine wear and damage
- ✓ High strength gasket that resists heat and distortion for extended seal life
- ✓ Heavy-duty baseplate with tuck-lock seam that resists seal leakage due to pressure distortion
- ✓ Spiral center tube that prevents media breakdown to maximize flow
- ✓ High strength cellulose/glass media that offers superior contaminant filtering capacity and efficiency
- ✓ A patented two-stage arrangement that provides more filtering surface to increase holding capacity and filter life by directing the oil through a full-flow section and a metered portion that continues through the by-pass section while removing finer contaminants
- ✓ Steel spring that maintains pressure on seal while keeping oil from bypassing filter element
- ✓ Heavy-duty, epoxy coated housing is impervious to cracking and corrosion

Complete parts lineup available at your Thermo King dealer

Application Chart (Trailer Oil Filters)

Case	Single	Qty	Description	SB II	SB III	SB-100	SB-110	SB-190	SB-200	SB-210	SB-300	SB-310	SB-400	Sentry	DE	SB	Super II	
67-7800		10	Compressor Oil Filter		■	■	■	■	■	■	■	■	■	■	■	■	■	
66-4917			Compressor Spin On Filter	■	■									■			■	
12-9182		12	EMI3000 Dual Oil Filter		■	■	■	■	■	■	■	■	■	■	■	■	■	
	11-9182	1	EMI3000 Dual Oil Filter		■	■	■	■	■	■	■	■	■	■	■	■	■	
12-7382		12	Dual Oil Filter		■	■	■	■	■	■	■	■	■	■	■	■	■	
	11-7382	1	Dual Oil Filter		■	■	■	■	■	■	■	■	■	■	■	■	■	
12-9101		12	Oil Filter	■	■									■			■	
	11-9101	1	Oil Filter	■	■									■			■	
12-9100		12	Oil Filter	■	■									■			■	

Multi-Temp ■

Application Chart (Truck Oil Filters)

Case	Single	Qty	Description	JDII	KDII	MDII	MD-100	MD-200	MD-300	RDII	TDII	TS-200	TS-300	TS-500	TS-600	Spectrum TS	T-600/T-800	T-1000	Spectrum	
67-7800		10	Compressor Oil Filter			■		■	■	■	■									
12-6182		12	Oil Filter	■	■	■	■	■	■	■	■	■	■	■	■	■	■	■	■	■
	11-6182	1	Oil Filter	■	■	■	■	■	■	■	■	■	■	■	■	■	■	■	■	■
12-9321		12	EMI2000 Bypass Oil Filter	■	■	■	■	■	■	■	■	■	■	■	■	■	■	■	■	■
	11-9321	1	EMI2000 Bypass Oil Filter	■	■	■	■	■	■	■	■	■	■	■	■	■	■	■	■	■
12-6228		12	Bypass Oil Filter	■		■				■	■	■	■	■	■	■	■			
	11-6228	1	Bypass Oil Filter	■		■				■	■	■	■	■	■	■	■			

Application Chart (TriPac Oil Filters)

Case	Single	Qty	Description	TriPac
12-6182		12	Oil Filter	■
	11-6182	1	Oil Filter	■



Genuine Thermo King
Electrical

Designed to withstand the most rigorous transportation environments, Thermo King electrical components will keep your unit running at its best.

Complete parts lineup available at your Thermo King dealer

Alternators

Thermo King offers the only alternators designed specifically for your demanding applications. The longer lasting and more durable design includes heavy-duty bearings, a powder coated frame, electrical components sealed with silicone, and stainless steel hardware for corrosion resistance. Also, proper charging is ensured through a proprietary temperature-compensated voltage regulator. The enhanced bronze slip rings and brushes provide increased durability for all the standard copper components.

Choose the product that best suits your needs:



Extended Life OE

- ✓ Delivers the same performance and life as factory-new Thermo King components
- ✓ Maximum corrosion resistance with epoxy powder coat paint and stainless steel hardware



Standard Life Plus

- ✓ Completely new alternators deliver reliable performance you can count on
- ✓ Fully backwards-compatible for all applicable Thermo King units



Remanufactured

- ✓ Not just rebuilt; totally remanufactured
- ✓ All alternators are completely disassembled and cleaned, and all worn parts are replaced

See which Alternator is right for you!



	Extended Life OE	Standard Life	Reman
Price	\$\$\$	\$\$	\$
Life Expectations	🕒🕒🕒🕒	🕒🕒	🕒
Core Required	No	Yes	Yes
Dealer Support	National	National	National
Warranty	2 year	1 year	1 year

Truck & TriPac



TriPac Extended Life OE
65 AMP CCW 45-2257



TriPac Standard Life Plus
65 AMP CCW 841-8464



Truck Extended Life OE
23 AMP CW 41-2194

Size	Specification	Part Number	Used On
37 Amp CW	Extended Life OE	45-2254	SB-III, SB-210, SB-310
	Standard Life Plus	841-8461	
	Remanufactured	841-5458	
37 Amp CCW	Extended Life OE	45-2255	T-600/800 and T-1000
65 Amp CW	Extended Life OE	45-2256	SB-III, SB-210, SB-310
	Standard Life Plus	841-8463	
	Remanufactured	841-5457	
65 Amp CCW	Extended Life OE	45-2257	TriPac
	Standard Life Plus	841-8464	
120 Amp CW	Extended Life OE	45-2258	Spectrum SB
	Standard Life Plus	841-8465	
	Remanufactured	841-5456	
120 Amp CCW	Extended Life OE	45-2259	TriPac
Regulator		44-9143	All above alternators
23 Amp CW	New	41-2194	MD-100, MD-200, MD-300 , TS-300
37 Amp CW	New	41-2195	MD-100, MD-200
90 Amp CW	New	41-2705	Spectrum TS



TECH TIP

Any time you change an alternator, we recommend installing a new drive belt to ensure maximum uptime before the next related service.

Complete parts lineup available at your Thermo King dealer

Starters

Genuine Thermo King starters are the only starters designed especially for your Thermo King unit. Don't trust your business to imitators - choose Genuine Thermo King!



Genuine Thermo King Extended Life OE Starters

- ✓ Genuine OEM starter that comes from the factory with new unit
- ✓ Engineered specifically for Thermo King engine
- ✓ Provide maximum durability and reduced operating costs
- ✓ Designed to give your Thermo King unit optimal performance and maximum life



Genuine Thermo King Standard Life Plus Starters

- ✓ Genuine Thermo King quality built to meet the demands of your Thermo King unit
- ✓ Engineered by Thermo King specifically for heavy-duty off-road application
- ✓ Provide maximum value



Genuine Thermo King Remanufactured Starters

- ✓ Exceeds the typical 'rebuild' process with an objective to remanufacture the parts close to new specifications
- ✓ Deliver like-new performance and quality
- ✓ Replacement of high-wear items such as bearings, brush holder screws and clutch spring clips
- ✓ Thorough inspection and repair of other components

See what Starter is right for you!



	Extended Life OE	Standard Life	Reman
Price	\$\$\$	\$\$	\$
Life Expectations	🕒🕒🕒	🕒🕒	🕒
Core Required	No	No	Yes
Dealer Support	National	National	National
Warranty	1 year	18 months	1 year

Starters (Trailer)



DI and SE

Extended Life OE 45-1993
 Standard Life Plus..... 45-2325
 Reman..... 845-2325



TK 486 (Tier 1)

Extended Life OE 45-1688
 Standard Life Plus..... 45-2323
 Reman..... 845-2323



TK 486 (Tier 2)

Extended Life OE 45-2177
 Standard Life Plus..... 45-2324
 Reman..... 845-2324



C201

Extended Life OE 45-1285
 Reman..... 845-1285

TECH TIP

Any time you replace a starter, always test the battery and the charging system for performance.

Trailer Applications

Engine	Starter Model	Previous Part #	Current Part #
DI/SE	Extended Life OE	45-1671	45-1993
	Standard Life		45-2325
	Remanufactured	845-1263	845-2325
TK 486 (Tier 1)*	Extended Life OE		45-1688
	Standard Life		45-2323*
	Remanufactured	845-1688	845-2323*
TK 486 (Tier 2/4i)	Extended Life OE		45-2177
	Standard Life		45-2324
	Remanufactured	845-2177	845-2324

*These models have later availability

Starters (Truck)



TK 374/395 & 370/376

Extended Life OE 45-1718
 Standard Life Plus..... 45-2326
 Reman..... 845-2326



TK 235/353

Extended Life OE 45-1251
 Reman..... 845-1251

Truck Applications

Engine	Starter Model	Previous Part #	Current Part #
TK 374/395 (Tier 1)*	Extended Life OE		45-1718
TK370/376 (Tier 2 and Tier 4)	Standard Life		45-2326*
	Remanufactured	845-1718	845-2326*

*These models have later availability

Starters (TriPac)



TK 270

Extended Life OE 45-2176
 Reman..... 845-2176

TriPac & Heat King Applications

Engine	Starter Model	Current Part #
TK 270	Extended Life OE	45-2176
	Remanufactured	845-2176

Electrical

Prior to introduction, Thermo King electrical components go through rigorous testing in equipment designed to push the component to its limits and solve any issues BEFORE the part is put into a Thermo King unit. Reliability and accuracy are key, and each component is given significant attention to ensure only the highest quality electrical parts are given the Thermo King name.

Sensors & Switches



Thermo King Switches and Sensors include:

- High quality materials selected specifically for Thermo King applications
- Proven reliability and accuracy through rigorous in-house testing at one of specially designed, global test facilities
- Less noise interference and a reliable signal in adverse electrical conditions



Kit Sensor Graded..... 40-871
Kit Sensor Ungraded 40-872



Sensor Ass'y
Engine Water..... 41-6539



Sensor-Coolant
Level..... 44-6534



Sensor Oil
Pressure 44-8883



Sensor RPM..... 44-9298



Switch Oil Level 41-402



Switch-Press Oil..... 41-7063



Switch-1PST 44-7792



Switch 4PDT Preheat..... 44-7932



Switch-Rocker DPDT..... 41-3246



Tripac Switch-Immersion
Pre-Cooler fan..... 41-7596



Switch-Press Oil..... 41-6865



TECH TIP

Toggle switches are defined by the number of terminal points in the back of the switch, whether the switch is opened or closed, and whether the switch has two or three positions. Thermo King offers all switches to fit your unit – contact your local dealer to ensure you get the right switch!

Application Chart (Trailer Sensors & Switches)

Part	Description	SB III	SB-100	SB-200	SB-300	SB-400	SB-190	SB-200 TG	SB-110	SB-210	SB-310	DE	SB	Super II
40-0871	Kit Sensor Graded	■	■	■	■	■	■	■	■	■	■	■	■	■
40-0872	Kit Sensor Ungraded	■	■	■	■	■	■	■	■	■	■	■	■	■
41-4470	Sensor Oil Level	■	■	■	■	■	■	■	■	■	■	■	■	■
41-6538	Sensor Ass'y Engine Water	■						■	■	■	■			■
41-6539	Sensor Ass'y Engine Water	■	■	■	■	■	■		■	■	■	■	■	■
41-7068	Sensor Ass'y Engine Water	■		■										■
44-6016	Sensor RPM	■												
44-6534	Sensor-Coolant Level	■										■	■	■
44-8883	Sensor Oil Pressure	■		■	■	■			■	■		■	■	■
44-9298	Sensor RPM	■	■	■	■	■	■	■	■	■	■	■	■	■
41-402	Switch Oil Level	■	■	■	■	■	■		■	■	■	■	■	■
41-1514	Switch Temp	■												
41-3669	Switch HPCO Complete	■	■	■	■	■	■		■	■	■	■	■	■
41-4523	Switch-HPCO	■		■	■		■			■	■	■	■	
41-7063	Switch-Press Oil	■	■	■	■	■	■	■	■	■	■	■	■	■
44-1164	Switch Defrost	■												
44-1357	Switch - Service Light	■												
44-3018	Switch Water Temp	■												
44-4774	Switch Oil Pressure	■												
44-5508	Switch HPCO	■												
44-7792	Switch-1PST	■		■								■	■	
44-7793	Switch 1PST	■												
44-7929	Switch-2PDT	■		■			■					■	■	
44-7932	Switch 4PDT Preheat	■												
44-9408	Switch-HPCO Compl	■												

Multi-Temp ■

Complete parts lineup available at your Thermo King dealer

Application Chart (Truck Sensors & Switches)

Part #	Description	KD II	MD II	MD-100	MD-200	MD-300	RD II	TD II	TS-200	TS-300	TS-500	Spectrum TS	V-200	V-250	V-280	V-300	V-500	T-600	T-800	T-1000
40-871	Kit Sensor Graded	■	■	■	■	■	■	■	■	■	■	■						■	■	■
40-872	Kit Sensor Ungraded	■	■	■	■	■	■	■	■	■	■	■						■	■	■
41-402	Switch - Oil Level	■	■		■	■	■	■	■	■	■	■								
41-1514	Switch - Temperature	■	■		MT		■	■						■	■					
41-3246	Switch - Rocker DPDT	■	■		■	■	■	■												
41-4470	Sensor Oil Level	■	■	■	■	■	■	■	■	■	■	■						■	■	■
41-4523	Switch-HPCO						■	■												
41-6538	Sensor Ass'y Engine Water																	■	■	■
41-6539	Sensor Ass'y Engine Water	■	■	■	■	■	■	■	■	■	■	■								
41-6865	Switch - Oil Pressure	■	■		■	■	■	■	■	■	■	■								
41-7064	Switch - Oil Pressure			■	■	■	■		■	■	■	■						■	■	■
44-1164	Switch - Defrost	■	■				■	■												
44-1357	Switch - Service Light	■	■				■	■												
44-3018	Switch - Water Temp	■	■		MT		■	■												
44-6016	Sensor RPM				■	■			■	■										
44-6534	Sensor - Coolant Level	■	■	■	■	■	■	■	■	■	■	■						■	■	■
44-8030	Switch LPCO	■	■		■	■	■	■					■	■	■	■	■			
44-8883	Sensor - Oil Pressure	■	■				■	■	■	■	■	■								
44-9298	Sensor RPM	■	■	■	■	■	■	■	■	■	■	■						■	■	■
66-2020	Switch Air	■					■													

Multi-Temp ■

**GENUINE
THERMO KING
EDGE**

Sensors

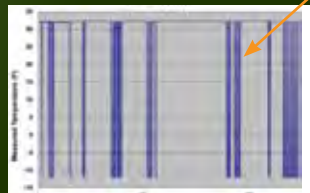


TK 416539

Thermo King



Competition



TK have less Noise Interference

Each 'glitch' indicates that the sensor had noise interference testing of three TK sensors vs three competitive sensors showed

TK sensors have a cleaner signal. Less noise violation means the alarms sent by the sensor are more accurate.

Application Chart (TriPac Sensors & Switches)

Part #	Description	
41-6944	Sensor Assembly	■
44-9298	Sensor RPM	■
41-7020	Switch Binary Pressure	■
41-7596	Switch-Immersion Pre-Cooler Fan	■
41-7597	Switch-Immersion Arctic Option	■
44-1357	Switch - Service Light	■
44-3018	Switch Water Temp	■
447792	Switch-1PST	■

TriPac

Solenoids



Solenoid Stop
Fuel Ported..... 41-7886



Solenoid-Compl..... 44-9181



Don't forget:

To ask your dealer for the correct
gaskets to match your solenoid!

For 416383

O-Ring..... 33-2230

For 449181

Plunger 44-8198

Boot..... 91-3095

Complete parts lineup available at your Thermo King dealer

Application Chart (Trailer Solenoids)

Part	Description	SB III	SB-100	SB-200	SB-300	SB-400	SB-190	SB-200 TG	SB-110	SB-210	SB-310	DE	SB	Super II
41-7886	Solenoid Stop Fuel Ported	■		■	■	■		■	■	■	■	■	■	■
44-2823	Solenoid	■	■	■	■	■	■	■	■	■	■	■	■	■
44-6544	Solenoid	■												
44-6727	Valve Solenoid	■	■				■							■
44-9181	Solenoid	■	■	■	■	■	■	■	■	■	■	■	■	■

Multi-Temp ■

Application Chart (Truck Solenoids)

Part #	Description	KD II	MD II	MD-100	MD-200	MD-300	RD II	TD II	TTS-200	TTS-300	TTS-500	Spectrum TS	V-200	V-250	V-280	V-300	V-500	T-600	T-800	T-1000	
41-6383	Solenoid Stop Fuel Ported	■	■	■	■	■	■	■	■	■	■	■							■	■	■
44-2823	Solenoid	■	■	■	■	■	■	■	■	■	■								■	■	■
44-6544	Solenoid	■	■																		
44-9181	Solenoid	■	■		■	■	■	■	■	■	■	■									

Multi-Temp ■

Application Chart (TriPac Solenoids)

Part #	Description	TriPac
41-6383	Solenoid Stop Fuel Ported	■

Relays



RELAY 1PST 41-478



RELAY 1PDT 41-895



RELAY 1PDT 44-9111

Application Chart (Trailer Relays)

Part	Description	SB III	SB-100	SB-200	SB-300	SB-400	SB-190	SB-200 TG	SB-110	SB-210	SB-310	DE	SB	Super II
41-478	Relay 1PST	■		■	■	■	■	■				■	■	■
41-895	Relay 1PDT	■	■	■	■	■	■	■		■	■	■	■	■
41-2794	Relay Starter	■	■				■							■
44-3186	Relay	■												
44-9111	Relay 1PDT	■												
44-9391	Relay DPST	■												

Application Chart (Truck Relays)

Multi-Temp ■

Part #	Description	KD II	MD II	MD-100	MD-200	MD-300	RD II	TD II	TS-200	TS-300	TS-500	Spectrum TS	V-200	V-250	V-280	V-300	V-500	T-600	T-800	T-1000
41-478	Relay 1PST				MT												■			
41-895	Relay 1PDT	■	■	■	■	■	■	■	■	■	■	■	■		■	■	■			
44-3186	Relay	■	■		MT		■	■												
44-9111	Relay 1PDT	■	■				■	■												
44-9391	Relay DPST													■						

Multi-Temp ■

Application Chart (TriPac Relays)

Part #	Description	TriPac
41-895	Relay 1PDT	■
44-9111	Relay 1PDT	■

Miscellaneous



Electronic Throttling
Valve Motor..... 40-888



Contactor & Timer Assy... 41-7934



Bolt Thermistor 44-6019



Motor 12V 44-8526



Pump-Fuel..... 41-7059



Harness-Alt 41-0213



Breaker Circuit 44-7774



Connector 44-5839



Transducer,
Press 200 Psi 41-7960



Link-Fuse 44-8244

Application Chart (Trailer Miscellaneous)

Part	Description	SB III	SB-100	SB-200	SB-300	SB-400	SB-190	SB-200 TG	SB-110	SB-210	SB-310	DE	SB	Super II
44-6019	Bolt Thermistor	■												
44-7530	Bolt-Thermister	■												
44-5839	Connector	■	■	■			■					■	■	
41-7934	Contactora & Timer Assy	■		■						■			■	
44-1659	Cutout And Reset Assy	■												
44-2756	Diode Assembly	■	■	■	■	■	■	■	■	■	■	■	■	■
41-213	Harness-Alt	■	■	■	■	■	■	■	■	■	■	■	■	■
44-9336	Harness-Alt Subassy	■												■
44-8244	Link-Fuse	■												■
44-9302	Meter-Amp	■												
44-8526	Motor 12V	■												
44-7172	Motor 12VDC	■												
104-632	Motor 230-460V/3/50-60HZ	■		■						■			■	
41-125	Splice Terminal 16 14 GA	■		■	■	■			■	■	■	■	■	■
44-5066	Terminal	■												
41-7960	Transducer, Press 200 PSI	■		■	■		■	■	■	■	■	■	■	
41-7959	Transducer, Press 500 PSI	■		■	■	■	■				■	■	■	■
41-7956	Transducer-Press 500 PSIG	■		■	■	■	■							
40-888	Electronic Throttling Valve Motor							■	■	■	■			

Multi-Temp ■

Application Chart (Truck Miscellaneous)

Part #	Description	KD II	MD II	MD-100	MD-200	MD-300	RD II	TD II	TS-200	TS-300	TS-500	Spectrum TS	V-200	V-250	V-280	V-300	V-500	T-600	T-800	T-1000	
44-7774	Breaker Circuit	■	■		MT		■	■													
44-5839	Connector	■	■	■	■	■	■	■	■	■	■	■	■	■	■	■	■	■	■	■	
41-7934	Contactor & Timer Assy	■	■	■	■	■		■	■	■	■	■							■	■	■
44-2756	Diode Assembly	■	■	■	■	■	■	■	■	■	■	■							■	■	■
41-4474	Harness-&-Sw- On/Off Compl			■	■	■			■	■	■	■							■	■	■
44-9336	Harness-Alt Subassy						■														
40-770	Kit Board And Jumper														■						
44-8244	Link-Fuse	■	■		■	■	■	■	■	■	■	■									
44-8526	Motor 12V		■				■							■	■						
44-7172	Motor 12Vdc		■				■														
41-5698	Motor 3Ph 1.8Kw Ls90												■				■				
41-7059	Pump-Fuel	■	■	■	■	■	■	■	■	■	■	■							■	■	■
41-125	Splice Terminal 16 14 Ga			■	■	■	■		■	■	■										
44-5066	Terminal				■	■	■		■	■	■							■	■	■	■
41-1807	Terminal 10Amp 18-24Ga															■	■				
41-7959	Transducer, Press 500 Psi											■									

Multi-Temp ■

TriPac Miscellaneous (continued)



TriPac Inverter 41-7784

TriPac Arctic Option 40-961

Application Chart (TriPac Miscellaneous)

Part #	Description	
40-961	TriPac Artic Option	■
41-1807	Terminal 10AMP 18-24GA	■
41-6802	Pump Fuel Electric	■
41-7251	Pump-Fuel Compl	■
41-7784	TriPac Inverter	■
44-5839	Connector	■
44-7774	Breaker Circuit	■

TriPac



Don't forget:

Thermo King offers all parts for your unit, including harnesses, connectors, and other electrical parts not shown here.

Complete parts lineup available at your Thermo King dealer

The Thermo King Advantage

Big company innovation, small company customer service



The Thermo King Distribution System makes sure your parts are where you need them, when you need them.

With a network of over 200 dealers across North America, the parts you need are never far away.



Thermo King Global Reliability Testing Centers provide state-of-the-art reliability, analysis, prototyping and testing.

With millions of dollars in the latest testing equipment, Thermo King ensures your units and components meet strict quality and reliability requirements BEFORE they are delivered to you.



Nationwide Warranty and Service Support gives you unequaled, one-on-one service for your individual needs.

A nationwide dealer service and warranty support network gives you the peace-of-mind of knowing you're covered 24 hours a day, no matter where you are.

Controllers

Designed exclusively for Transport Refrigeration applications, Thermo King's microprocessor controllers offer not just temperature control but "Best in Class" total temperature management.

Controllers (Trailer)



Trailer Single & Multi-Temp

- Easy to use text display for control and monitoring of system performance
- Enhanced safety and security for load protection
- 21 language capability for easy operation in multi-lingual environments
- CargoWatch™ provides temperature and system data for HACCP plan
- ServiceWatch™ built in preventive maintenance logger for improved diagnostics and record of system performance
- Improved diagnostics to understand and respond to problems

Controllers (Trailer Single Temp)



6 Relay Board
MP-VI 41-3061



Relay Board
MP-IV, MP-V, TG-VI 41-3411



Controller, TG-V 45-1579



Controller, TG-VI 45-1613
Reman Controller,
TG-VI 845-1613



Interface Board, SR-2 45-2275



Reman, MP-IV+ 845-1600
Reman, MP-IV+
with Comm 845-1601

Complete parts lineup available at your Thermo King dealer



Controller Board, SR2..... 45-2302

Controllers (Trailer Multi Temp)



I/O Module, MP-IV MT.... 41-866



HMI, SR-2..... 41-6600
Reman HMI, SR-2..... 841-6600



Interface Board
MP-IV MT 41-7423



Controller, TG-V 45-1579



Interface Board, SR-2 45-2275



MP-IV MT
without Comm 45-1960
Reman MP-IV MT
without Comm 845-1960
MP-IV MT
with Comm 45-1961



Expansion
Module SR-2 41-6889

Application Chart (Trailer Controllers)

New	Reman	Description	SB III	SB-100	SB-200	SB-300	SB-400	SB-190	SB-200 TG	SB-110	SB-210	SB-310	Sentry	DE	SB	Super II
	845-1600	Controller MP-IV+	■													■
	845-1601	Controller MP-IV+ COM	■													■
41-3411		Relay Board	■													■
41-3061		PC 6-Relay Board	■		■	■	■	■								■
45-1579		Controller TG-V	■										■			■
45-1613	845-1613	Controller TG-VI Reman	■	■					■							■
41-6600	841-6600	HMI And Gasket Assembly								■	■	■		■	■	
45-2302		Controller Board Assy, SR-2								■	■	■		■	■	
45-2275		Interface Board Controller, SR-2								■	■	■		■	■	
45-1960	845-1960	Cntrl W/O Comm Reman	■											■	■	■
45-1961		Cntrl -Mp-IV+ W/Comm	■											■	■	■
41-7423		Interface Board	■											■	■	■
41-0866		Module I/O	■											■	■	■
41-6889		Module Expansion SR-2 M/T												■	■	

Multi-Temp ■

Controllers (Truck)



HMI, TTMT..... 45-2097

Trailer Single & Multi-Temp

- Improved Fuel Savings Features
- Enhanced Load Management with ETV (Electronic Throttling Valve)
- ServiceWatch™ built in preventive maintenance logger for improved diagnostics and record of system performance
- 21 language capability for easy operation
- Programmable hour meters to easily track maintenance intervals
- Guarded access menu allows custom tailored unit setup
- Maintenance Menu provides diagnostics and service capability
- Can be used as dash mounted controller or as a hand held diagnostic tool
- For single and multi-temp systems

Complete parts lineup available at your Thermo King dealer

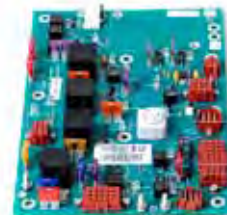
Controllers (Single Temp Truck)



Controller, TG-V 45-1579



Interface Board
with phase selection..... 41-8088



Interface Board, MP-T 45-2219



Controller,
MP-T 45-2220
Controller, Reman,
MP-T 845-2220



In-Cab
Controller, MP-T 45-1866



Controller Board, SR2..... 45-2302

Controllers (Multi-Temp Truck)



Controller, TG-V 45-1579



HMI, TTMT..... 45-2097



MP13 In-Cab
Controller 45-1780

Application Chart (Truck Controllers)

New	Reman	Description	MD II	MD-100	MD-200	MD-300	RD II	TD II	TS-200	TS-300	TS-500	Spectrum TS	V-200, 300, 500	T-600, 800, 1000
45-1579		Controller TG-V	■				■	■						
45-2302		Controller Board Assy, SR-2												■
45-2220	845-2220	Controller MP-T	■	■	■	■	■	■	■	■	■			
41-8088		Interface Board-Phase Selection MP-T	■	■	■	■	■	■	■	■	■			
45-1866		Box-Cab Remote	■	■	■	■	■	■	■	■	■			
45-2219		Interface Board MRT	■	■	■	■	■	■	■	■	■			
45-2097		HMI Assy, Truck										■		
45-1780		Box-Cont In-Cab											■	■

Multi-Temp ■

Controllers (TriPac)



TriPac HMI 45-2289



TriPac Board Interface..... 45-2239

Application Chart (TriPac Controllers)

New	Description	TriPac
45-2289	TriPac HMI Assembly	■
45-2239	TriPac Interface Board	■



Genuine Thermo King
Engines

Designed to maximize the life of Thermo King units, our engine products are offered with nationwide warranty coverage, which doubles when you have the installation performed by your Thermo King dealer.

Engines



Tier 4i Engines available through Thermo King

- CARB compliant for seven years
- Retrofit into SB and Super II trailer units, kits available through Thermo King
- Lowest lifecycle cost solution for CARB compliance

Thermo King also offers the following kits to help you retrofit your SB or Super II unit for CARB compliance. Please contact your local Thermo King dealer for more information.

CARB Retrofit Kits

	SB	Super II	Engine Type
Alternator Mounting	90-403/92-3870/92-3866	90-404	Yanmar
Throttle Solenoid	90-405/90-406	90-405/90-406	Yanmar
Engine Vibration Mounts	90-401	90-402	Yanmar
Battery Cables	41-6565 and 41-6566	41-6616 and 41-6615	Yanmar
Wiring Brackets	92-6727 and 92-4990	92-6727 and 92-4990	Yanmar
Complete Engine Retrofit Kit	10-397	10-398	Isuzu



Remanufactured SE 2.2
Engine (Post 1999) 8101-319



Remanufactured TK 486E
Engine (2200 RPM) 8101-336



486V
(2200 RPM) 101-371



Reman TK 395E
Engine..... 8101-338



TK 376 Engine 8101-342



TK 270 Engine 101-358

Gaskets

Ask your dealer for the gaskets to match your Thermo King engine.
Common engine gaskets include:

Gasket..... 33-1749
O-Ring Case..... 33-3512
Seal 33-2513

Water Pumps

Thermo King water pumps use high capacity bearings for longer service life. Smooth, high quality castings cause less turbulent coolant flow and increased pump efficiency. Unitized seal design ensures consistent performance and reliability.



SE 2.2 Water Pump 11-9356
Reman..... 811-9356



TK 486 Water Pump 13-509
Reman..... 813-506



TK 395E Water Pump..... 13-507
Reman..... 813-507



TK 374E Water Pump..... 13-506
Reman..... 813-506



TK 370 Water Pump..... 13-576



TK 376 Water Pump..... 13-484



TK 270 Water Pump 13-948
 Reman..... 813-948



Don't Forget

Thermo King sells all parts to repair Thermo King Engines, including thermostats, injection pumps, injectors, and more! Not all parts are listed here – contact your Thermo King dealer today for more information!

Thermostats



Injection Pumps



Injectors



**GENUINE
 THERMO KING
 EDGE**

Injectors



Thermo King Injectors

are 100% tested for spray pattern, opening pressure and proper sealing to ensure optimum performance.

Trailer Engines

SE 2.2 (pre 99)

Type	Engine	Water Pump	Injectors	Injection Pump	Thermostat	Application
New	NA	11-9356	13-650	101-281	11-7702	SB-III pre-99
New	NA	NA	NA	101-309	NA	
New	NA	NA	NA	8101-281	NA	
Reman	8101-282	811-9356	813-650	8101-309	NA	

SE 2.2 (post 99)

Type	Engine	Water Pump	Injectors	Injection Pump	Thermostat	Application
New	NA	11-9356	11-9196	101-320	11-7702	SB-III post 99
Reman	8101-319	811-9356	811-9196	8101-320		

486E (2200 rpm)

Type	Engine	Water Pump	Injectors	Injection Pump	Thermostat	Application
New	NA	13-509	11-8715	101-321	11-9624	SB-III, SB-210, SB-310, Spectrum SB
Reman	8101-336	813-509	811-8715	8101-321	NA	

486EH (2600 rpm)-

Type	Engine	Water Pump	Injectors	Injection Pump	Thermostat	Application
New	101-351	13-509	13-808	101-331	11-9624	SB-III, SB-210, SB-310, Spectrum SB
Reman	8101-351	813-509	811-8715	8101-331	NA	

486V (2200 rpm)

Type	Engine	Water Pump	Injectors	Injection Pump	Thermostat	Application
New	101-374	13-509	13-388	101-362	13-385	SB-210, Spectrum SB
Reman	NA	813-509	NA	NA	NA	

486VH (2600 rpm)

Type	Engine	Water Pump	Injectors	Injection Pump	Thermostat	Application
New	101-375	13-509	13-389	101-354	13-385	SB-210, SB-310, Spectrum SB
Reman	NA	813-509	NA	NA		

Truck Engines

395E

Type	Engine	Water Pump	Injectors	Injection Pump	Thermostat	Units affected
New	NA	13-507	11-8769	11-6617	11-9621	TS-500
Reman	8101-338	813-507	811-8769	NA	NA	

374E

Type	Engine	Water Pump	Injectors	Injection Pump	Thermostat	Units affected
New	NA	13-506	11-8769	11-6093	11-7975	MD-200, MD-300, TS-200, 300
Reman	8101-342	813-506	811-8769	NA	NA	

370

Type	Engine	Water Pump	Injectors	Injection Pump	Thermostat	Units affected
New	101-356	13-576	13-598	101-360	13-954	MD-100, 200, 300
New	NA	NA	NA	101-373	NA	TS-200, 300

370N

Type	Engine	Water Pump	Injectors	Injection Pump	Thermostat	Units affected
New	101-369	13-576	13-598	101-360	13-954	T-600, T-800
New	NA	NA	NA	101-373	NA	

376

Type	Engine	Water Pump	Injectors	Injection Pump	Thermostat	Units affected
New	101-345	13-484	13-431	101-352	13-954	TS-500,

376N

Type	Engine	Water Pump	Injectors	Injection Pump	Thermostat	Units affected
New	101-370	13-400	13-431	101-372	13-954	T-1000

TriPac Engines

270

Type	Engine	Water Pump	Injectors	Injection Pump	Thermostat	Units affected
New	101-358	13-948	13-598	13-471	11-9684	TriPac
Reman	NA	813-948	NA	NA	NA	



TECH TIP

Any time you replace an engine, we recommend you install a new oil pressure switch, a new water temperature switch and a new coolant thermostat.

Complete parts lineup available at your Thermo King dealer



Genuine Thermo King
Compressors

Thermo King compressors are designed and tested for rigorous transportation environments. Thermo King delivers quality, reliability, and performance you can count on.

Compressors

Genuine Thermo King compressors are developed by dedicated teams of Thermo King engineers and tested extensively in state-of-the-art R&D centers for high performance and long life. Cheap imitation compressors and compressor parts reduce performance and efficiency, resulting in higher operating costs. Don't settle for the knockoff - choose the original!

New Compressors

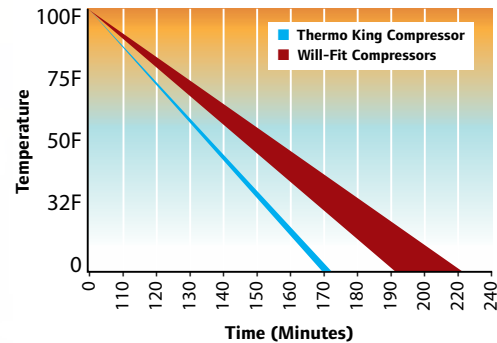


New X430 Compressor102-900
 New X430 Exchange Compressor 8102-900

- Reduced Fuel Consumption- Reduced friction due to new high precision crankshaft bearings leads to longer compressor life and less fuel consumed.
- Increased Life Span - Thermo King uses oil pump housings designed to reduce stress on bearings, increasing the compressor lifespan.
- Proven Reliability - Thermo King compressors are engineered by Thermo King and extensively tested for optimum performance and reliability under extreme conditions.

Faster Pulldown

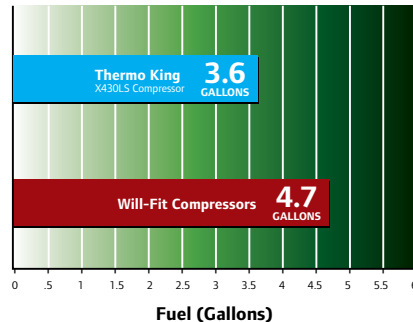
With both trailer box and ambient air temperatures of 100°F, The Thermo King compressor completed pulldown as much as 53 minutes faster than the will-fit compressors.



One-on-one comparisons based on testing of one of each competitive part.

Less Fuel Consumed

The Thermo King compressor-equipped unit used over 1 gallon less fuel than the will-fit compressor-equipped units during the pulldown tests.



One-on-one comparisons based on testing of one of each competitive part.

Complete parts lineup available at your Thermo King dealer

Reman Compressors



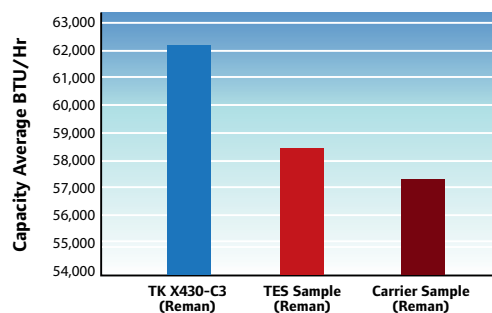
Reman Compressor 8102-940

The Thermo King X430-C3 compressor is remanufactured on the same production line as the original Thermo King X430 compressor, the industry standard.

- Genuine OE Parts
- Genuine OE Skilled Manufacturing
- Genuine OE Quality, Reliability, and Performance
- Two-Year Warranty - On dealer- installed compressors (one-year on non-dealer installations).
- Nationwide Dealer Warranty Protection Coverage
- Less Fuel Consumed - Means less carbon emissions.
- Recycled Core Components - Results in less waste.

Higher Capacity

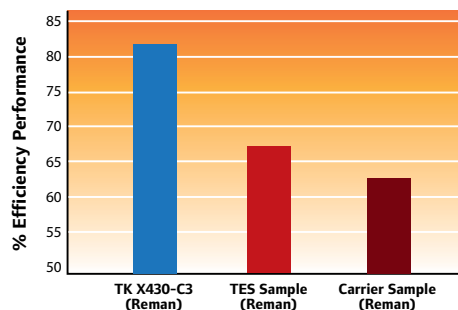
Reman X430-C3 outperformed competition on capacity by up to 9%, which means less run-time, lower wear and greater fuel savings.



Based on three side by side tests of competitive parts."

Greater Efficiency

Reman X430-C3 outperformed the competition on efficiency by up to 23%, which means greater fuel savings.



Based on three side by side tests of competitive parts."

Compressors (Trailer)



7qt. Deep Sump Compressors

- 7qt. Deep Sump X430 New102-902
- 7qt. Deep Sump X430 New Exchange..... 8102-902
- 7qt. Deep Sump X430 Reman..... 8102-975

Deep sump 7qt. compressors are recommended for multi-temp units to ensure the compressor has enough oil to power the multiple zones.

- X426 Compressor 102-911
- X426 New Exchange..... 8102-913

Application Chart (Trailer Compressors)

Part	Description	SB III	SB-100	SB-200	SB-300	SB-400	SB-190	SB-200 TG	SB-110	SB-210	SB-310	DE	SB	Super II
102-900	New Compressor X430	■	■	■	■		■	■	■	■	■	■	■	■
8102-900	New Exchange X430 C5 Compressor	■	■	■	■		■	■	■	■	■	■	■	■
8102-940	Reman X430 C3 Compressor	■	■	■	■		■	■	■	■	■	■	■	■
102-902	New X430 Deep Sump Compressor	■	■	■			■		■	■	■	■	■	■
810-2902	New Ex. X430 Deep Sump Comp.	■	■	■			■		■	■	■	■	■	■
102-911	New X426 C5 Compressor	■	■	■			■		■	■	■	■	■	■
8102-913	New Exchange X426 Compressor	■	■	■			■		■	■	■	■	■	■
22-759	Manifold Compressor	■		■	■		■			■	■	■	■	
22-735	Manifold Discharge	■												■

Multi-Temp ■

Compressors (Truck)

Recip Compressors:



X214 Compressor 102-477
X214 New Exchange..... 8102-477

Deep Sump X214 (1020825) is also available and recommended for multi-temp units.

Reliable Reciprocating Compressors

- High volumetric efficiency vs. other reciprocating compressors due to more pumping capacity per cubic inch
- Reliable, time-tested design
- Field-repairable for easy service
 - No special tools or facilities required
 - Removable and replaceable cast iron cylinder sleeve design

Scroll Compressors:



The Most Advanced Scroll Compressors Ever

- High efficiency and greater capacity
- Less noise and vibration
- Less maintenance (87% fewer moving parts)
- E nickel-plated Oldham coupling for greater reliability



4 HP 102-949
4 HP 102-946



6 HP 102-950
6 HP, Multi-Temp 102-951

Application Chart (Truck Compressors)

Part #	Description	KD II	MD II	MD-100	MD-200	MD-300	RD II	TD II	TS 200	TS-300	TS-500	V-200/300	V-500	Spectrum TS	T-600	T-800	T-1000
8102-477	New Exchange X214 Comp.	■	■														
102-477	New X214 Compressor	■	■														
102-825	New X214 Deep Sump Comp.			■	■	■									■	■	
102-951	Scroll -6 HP, Multi-Temp													■	■	■	■
102-950	Scroll - 6 HP										■						
102-949	Scroll -4 HP								■	■							
102-946	Scroll -4 HP														■	■	■
22-759	Manifold Compressor							■									
22-735	Manifold Discharge						■	■									
102-900	New Compressor X430																■

Multi-Temp ■

Compressors (Small Truck & TriPac)



COMPRESSOR-TM15-HD 12V..... 102-580

Application Chart (TriPac Compressors)

Part #	Description		
102-580	Compressor-TM15-HD 12V	■	TriPac
102-572	Compressor-TM15-XD 12V	■	

Application Chart (Small Truck Compressors)

Part #	Description	V-190	V-200	V-250	V-280	V-300	V-400	V-500
102-570	Compressor-TM16-XD 12V		■	■		■		■
102-571	Compressor TM16 XD 24V		■			■		■
102-572	Compressor-TM15-XD 12V		■	■	■	■	■	■
102-574	Compressor-TM13-XD 12V	■	■	■		■		■
102-580	Compressor-TM15-HD 12V		■	■	■	■	■	■
102-586	Compressor TM16HD 12V VAR		■			■		■
102-741	Compressor Assy					■		
102-811	Compressor Assy, TK-208R		■					
102-858	Compressor 230/						■	■
102-860	Compressor, 230/							■
22-759	Manifold Compressor						■	
22-992	Manifold Compressor	■	■	■	■	■	■	■

Complete parts lineup available at your Thermo King dealer

Compressor Components



Kit - X426
Overhaul Compressor 20-139

Also available:

Kit - X430
Overhaul POE..... 20-159

Kit - X430 Overhaul
Conversion..... 20-169

Kit - X430
Overhaul Compressor 20-140

Kit - Compressor
Oil Filter..... 20-123

Kit - Compressor
Oil Filter..... 20-160

Kit - Compressor
Oil Filter..... 20-184



TECH TIP

When replacing a compressor, always replace the drier and install a compressor oil filter. Thermo King also recommends running the unit for a few hours at testing with the oil test kit to validate the compressor oil is acceptable – remember to closely inspect the compressor drive bushings for wear!



Seal Small Shaft 22-1100



Seal Large Shaft 22-1101



Compressor Oil, POE
 1 L 35 203-513
 Compressor Oil, POE
 1 L 120 203-515



Compressor Oil,
 Alkylbenzene 67-404



Don't Forget

Thermo King sells all parts to repair Thermo King Compressors, including connecting rods, crankshafts, pistons, bearings and more! Not all parts are listed here - contact your Thermo King dealer today for more information!

Complete parts lineup available at your Thermo King dealer

Application Chart (Compressor Components Trailer)

Part	Description	SB III	SB-100	SB-200	SB-300	SB-400	SB-190	SB-200 TG	SB-110	SB-210	SB-310	DE	SB	Super II
20-181	Kit Drive Shaft-Coupling	■												
22-789	Head-Cyl-Compr	■		■	■				■	■	■	■	■	■
22-1160	Pump Oil Compr Assy	■	■		■		■	■	■	■	■	■	■	■
22-992	Manifold-Compr Tm													
22-759	Manifold Compressor	■		■	■		■			■	■	■	■	
22-735	Manifold Discharge	■												■
67-404	Compressor Oil, AB	■	■	■	■		■	■	■	■	■	■	■	■
203-513	Compressor Oil – 1 L 35, POE	■	■	■	■		■	■	■	■	■	■	■	■
203-515	Compressor Oil – 1 L 120, POE	■				■								
22-1101	Seal Large Shaft	■	■	■	■		■	■	■	■	■	■	■	■
22-1100	Seal Small Shaft	■												

Multi-Temp ■



Gaskets

Ask your dealer for the best gaskets to fit your compressor. Common gaskets include:

O-Ring	33-2019
Gasket O-Ring.....	33-1223
O-Ring	33-230
O-Ring	33-1221
Gasket Discharge	33-2805

Application Chart (Compressor Components Truck)

Part #	Description	KD II	MD II	MD-100	MD-200	MD-300	RD II	TD II	TS-200	TS-300	TS-500	Spectrum TS	T-600	T-800	T-1000
22-789	Head-Cyl-Compr						■								
22-1160	Pump Oil Compr Assy		■				■	■							
22-759	Manifold Compressor							■							
22-735	Manifold Discharge						■	■							
67-404	Compressor Oil, AB	■	■				■	■							
203-513	Compressor Oil – 1 L 35, POE	■	■	■	■	■	■					■			
22-1100	Seal Small Shaft	■	■				■		■	■	■	■	■	■	■

Multi-Temp ■

Application Chart (Small Truck Compressors)

Part #	Description	V-200	V-250	V-280	V-400	V-300	V-500	V-520
203-515	Compressor Oil – 1 L 120	■	■	■	■	■	■	■

Application Chart (TriPac Compressors)

Part #	Description	TriPac
22-992	Manifold-Compr Tm	■
203-513	Compressor Oil – 1 L 35, POE	■
203-515	Compressor Oil – 1 L 120, POE	■

MORE PARTS AVAILABLE

ASK YOUR DEALER FOR THE COMPLETE PARTS LIST...



Complete parts lineup available at your Thermo King dealer



Genuine Thermo King
Refrigeration

All Thermo King refrigeration components are designed for long life with maximum strength and support. Keep your equipment running at peak form - choose only Genuine Thermo King!

Driers

Genuine Thermo King offers only high efficiency filter driers with significant reserve capacity for the application. They are manufactured to protect the refrigeration system from water, harmful contaminants and particles and tested to withstand extensive and severe vibration.



Thermo King driers use a full wrap final filter pad that imitation driers do not match. The full wrap feature provides an optimum end cap seal so that no appreciable physical particulate material can escape the drier.



Some imitation driers may use granular or 'bead' technology where desiccant beads rub together as refrigerant passes through, causing the risk that fine pieces of the beads could be passed into the system.

Thermo King uses a molded solid core technology created with a blend of desiccants that are uniform in size for proper porosity and bonded together so that the desiccants stay in place as the refrigerant passes through.

Driers (Trailer)



Single 61-600
Case of 10 68-600



Single 66-4900
Case of 10 67-4900
O-ring 33-2115
O-ring adapter..... 33-566



Single 66-4729
Case of 10 67-4729
O-ring 33-2115
O-ring adapter..... 33-566

Part # - Single	Part # - Case of 10	SB III	SB-100	SB-200	SB-300	SB-400	SB-190	SB-200 TG	SB-110	SB-210	SB-310	DE	SB	Super II
61-600	68-600	■	■	■	■	■	■	■	■	■	■	■	■	■
66-4900	67-4900	■												■
66-4729	674729	■												

Multi-Temp ■

Complete parts lineup available at your Thermo King dealer

Driers (Truck)



Single 61-800
Case of 10 68-800



Single 66-4729
Case of 10 67-4729

Driers (Truck continued)



Single 66-8471



Single 66-8718
O-ring 33-1015
O-ring adapter..... 33-566

Don't Forget

To order o-rings and an adapter for your drier (when needed)

Trailer

O-ring: 33-2115
Adapter: 33-566

Truck

O-ring: 33-1015
Adapter: 33-566

TriPac

O-ring: 33-1461

Part # - Single	Part # - Case of 10	KD II	MD II	MD-100	MD-200	MD-300	RD II	TD II	TS-200	TS-300	TS-500	V-200/300	V-500	Spectrum TS	T-600/800	T-1000	SPECTRUM
61-800	68-800	■	■	■	■	■	■	■	■	■	■			■	■	■	■
66-4729	67-4729	■				■											
66-8471													■				
66-8718												■	■				
																	Multi-Temp ■

Driers (TriPac)



Single 61-3316
O-ring 33-1461



Single 61-3552
O-ring (included) 33-1461

Part # - Single	TriPac
61-3316	■
61-3552	■

Valves & Vibrasorbers

Thermo King refrigeration parts are designed to keep your unit running in top condition. All components must pass rigorous testing to withstand the tough conditions a refrigeration unit faces on the road.

Vibrasorbers



Vibrasorber 66-5784



Discharge Vibrasorber 66-7848



Suction Vibrasorber 66-6024

Valves



Expansion Valve..... 61-1900



Valve - Expansion..... 66-8200



Valves Service Discharge... 66-129



Valve - Reg Press..... 66-5013



Valve - Sol Liq / Refr..... 61-283



Valve Suct Serv 66-5318



Valve Relief 66-7392



Valve Reg..... 61-1091

Valves & Vibrasorbers (Trailer)

Part #	Description	SB III	SB-100	SB-200	SB-300	SB-400	SB-190	SB-200 TG	SB-110	SB-210	SB-310	DE	SB	Super II
61-598	Valve-Expansion	■												
61-1300	Valve, Solenoid	■										■	■	■
61-1900	Valve Expansion		■				■	■	■	■			■	
61-3401	Valve, Solenoid	■						■				■	■	■
61-3767	Valve-Expansion							■	■	■	■			
66-0129	Valve Service Discharge	■	■	■	■		■	■	■	■	■	■	■	■
66-1273	Valve Check	■	■	■	■	■	■	■	■	■	■	■	■	■
66-2009	Valve Pilot Solenoid 12V	■												■
66-5318	Valve Suct Serv	■	■	■	■	■	■	■	■	■	■	■	■	■
66-5908	Valve-Sol-Pilot-12VDC	■												
66-5993	Valve-Expansion	■												
66-6268	Valve-Sol Liq/Refr	■											■	■
66-7392	Valve Relief	■	■	■	■	■	■	■	■	■	■	■	■	■
66-7532	Valve Expansion													■
66-7636	Valve-Sol-Pilot 12VDC	■	■	■	■	■	■	■	■	■	■	■	■	
66-7893	Valve Expansion	■											■	
66-8200	Valve-Expansion	■												
66-5784	Vibrasorber	■	■	■	■	■	■	■	■	■	■	■	■	
66-6024	Vibrasorber-Suction	■	■	■	■		■	■	■	■	■	■	■	
66-7848	Vibrasorber-Discharge													■

Multi-Temp ■

Valves & Vibrasorbers (Truck)

Part #	Description																
		KD II	MD I	MD-100	MD-200	MD-300	RD II	TD II	TS-200	TS-300	TS-500	V-200/300	V-500	Spectrum TS	T-600/800	T-1000	
61-283	Valve-Sol Liq/Refr	■	■	■	■	■	■	■	■	■	■	■					
61-598	Valve-Expansion						■										
61-1091	Valve Reg	■	■	■	■	■				■	■						
61-1300	Valve, Solenoid		■				■										
66-1273	Valve Check			■	■	■	■			■	■	■					
66-2009	Valve Pilot Solenoid 12V	■	■				■	■									
66-5013	Valve-Regulator Pressure		■														
66-5908	Valve-Sol-Pilot-12VDC	■	■				■					■	■				
66-5993	Valve-Expansion	■	■				■										
66-6268	Valve-Sol Liq/Refr		■				■					■	■				
66-7392	Valve Relief	■	■	■	■	■	■	■	■	■	■	■					
66-8200	Valve-Expansion		■				■										
66-8284	Valve-Expansion						■	■			■						
66-8560	Valve-Sol-Pilot 12VDC	■	■	■	■	■	■	■	■	■	■				■		
61-4715	Valve-Expansion															■	
61-4704	Valve-Expansion																■

Multi-Temp ■

Valves & Vibrasorbers (TriPac)

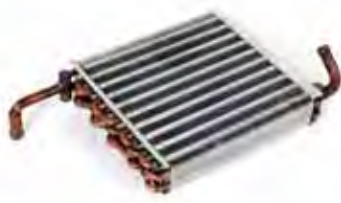
Part #	Description																
		TriPac															
61-4091	Valve-Expansion																■

Complete parts lineup available at your Thermo King dealer

Coils



Evaporator Coils..... 67-0916



Precooler Coils..... 67-2146



Coil Assembly
Condenser..... 67-2218



Coil..... 67-2244

Refrigeration - Coils (Trailer)

Part #	Description	SB III	SB-100	SB-200	SB-300	SB-400	SB-190	SB-200 TG	SB-110	SB-210	SB-310	DE	SB	Super II
67-916	Coil Evap	■	■	■	■		■	■	■	■	■			
67-1818	Coil Evaporator					■								
67-2218	Coil Assembly, Condenser	■	■	■	■	■	■	■	■	■	■	■	■	
67-2219	Coil Assembly, Condenser	■		■	■	■	■	■	■	■	■	■	■	

Multi-Temp ■

Refrigeration - Coils (Truck)

Part #	Description	KD II	MD II	MD-100	MD-200	MD-300	RD II	TD II	TS-200	TS-300	TS-500	V-200/300	V-500	Spectrum TS
67-2167	Coil Condenser										■			■
67-2213	Coil					■								
67-2216	Coil			■	■									

Multi-Temp ■

Refrigeration - Coils (TriPac)

Part #	Description	TriPac
67-2146	Coil, Precooler	■
67-2244	Coil	■
67-2363	Coil-Condensor	■



TECH TIP

Any time a refrigeration system is open for service we recommend you always change the drier to assure maximum system performance.

If the system was open for any amount of time, we also recommend testing the compressor oil with an oil test kit to ensure that the oil is not contaminated.

Complete parts lineup available at your Thermo King dealer

Refrigeration Kits



Kit 3Way Valve Rebuild.... 60-300



Kit Check Valve 3 Way 60-163



Kit Valve Throttling 60-298

Refrigeration Kits (Trailer)

Part #	Description	SB III	SB-100	SB-200	SB-300	SB-400	SB-190	SB-200 TG	SB-110	SB-210	SB-310	DE	SB	Super II
60-163	Kit Check Valve 3 Way	■	■	■	■	■	■	■	■	■	■			
60-186	Kit Repair	■										■	■	
60-251	Kit Repair Valve & Tube	■										■	■	■
60-294	Kit Repair For 61-3401	■						■				■	■	■
60-298	Kit Valve Throttling	■	■				■	■	■	■		■	■	■
60-300	Kit 3Way Valve Rebuild	■	■	■	■	■	■	■	■	■	■			
67-2276	Pan Defrost Compl	■	■	■	■		■	■	■	■	■			

Multi-Temp ■

Refrigeration Kits (Truck)

Part #	Description	KD II	MD II	MD-100	MD-200	MD-300	RD II	TD II	TS-200	TS-300	TS-500	V-200/300	V-500	Spectrum TS
60-163	Kit Check Valve 3 Way	■	■	■	■	■	■	■	■	■	■			■
60-186	Kit Repair		■				■							
60-251	Kit Repair Valve & Tube		■				■							
60-298	Kit Valve Throttling						■	■			■			■
60-300	Kit 3Way Valve Rebuild	■	■	■	■	■	■	■	■	■	■			■

Multi-Temp ■

General Components



Tank Receiver..... 67-1179



Thermometer
Dual Scale 61-3467



Pan Defrost 67-2276



Hose 1/4Id
10.00In Refr 66-7472



Don't Forget

Thermo King sells all refrigeration components required to repair your Thermo King refrigeration units, including tanks, tubes, hoses, coils, and more! Not all parts are listed here – contact your Thermo King dealer today for more information!

Complete parts lineup available at your Thermo King dealer



Genuine Thermo King
Drives & Fans

Engineered for optimum performance and long life,
Genuine Thermo King drive components deliver
for the long haul.

Drives & Fans

All Thermo King drives and fans are rigorously tested and evaluated to ensure premium quality, reliability, and performance within our refrigeration units.

Fans



Condenser Fan 78-595
SB III, SB-210,
and Spectrum SB



Condenser Fan 78-1080
SB-210



Condenser Fan 78-687
MD Units
(78-954 is plastic version)



Condenser Fan 78-1214
TS-200 and 300



Condenser Fan 78-1403
TS-500 and Spectrum TS



Remote
Evaporator Fan..... 78-1554
Spectrum SB and TS



Precool Coil Fan 78-1535
TriPac



Evaporator Fan..... 78-1537
TriPac

Application Chart Fans

	SB III	SB-210	SB-310	TriPac	MD-100 200, 300	TS-200, 300	TS-500	Spectrum SB	Spectrum TS
Condenser Fan	78-595	78-1080	78-595		78-687	78-1214	78-1403	78-595	78-1403
Fan Precool Coil				78-1535					
Fan Evaporator				78-1537		78-1308	78-1306		
Fan Evap CCW						78-1305	78-1307		
Remove Evap Blower								78-1554	78-1554

Drives



Fan Shaft
Assembly 78-706
SB III, SB-210, SB-310
and Spectrum SB



Fan Shaft
Assembly 78-782
MD Units



Fan Shaft
Assembly 78-1066
TS Units

Jackshaft Assemblies



Jackshaft
Assembly 77-1712
MD Units



Jackshaft
Assembly 77-2580
TS-200 and 300



Jackshaft
Assembly 77-1011
TS-500 and Spectrum TS

Couplings



Compressor Drive
Coupling
(8-pin large shaft)..... 77-2506
SB III, SB-210, SB-310,
and Spectrum SB



Compressor Drive
Coupling
(6-pin large shaft)..... 77-2509
SB III



Compressor Drive
Coupling
(8-pin small shaft) 77-2358
SB III



Compressor Drive Coupling
(6-pin small shaft) 77-2504
SB III

Application Chart Drives

	SB III	SB-210	SB-310	MD-100, 200, 300	TS-200, 300	TS-500	Spectrum SB	Spectrum TS
Coupling Comp. Drive	77-2504	77-2506	77-2506				77-2506	
Coupling Comp. Drive	77-2358							
Coupling Comp. Drive	77-2509							
Coupling Comp. Drive	77-2506							
Fan Shaft	77-2614	77-2614	77-2614	77-2617	77-2619	77-2619	77-2614	
Idler Pulley Shaft	77-2613	77-2613	77-2613				77-2613	
Fan Shaft Assy	78-706	78-706	78-706	78-782	78-1066	78-1066	78-706	
Jackshaft Assy				77-1712	77-2580	77-1011		77-1011

Miscellaneous Kits



Bearing Kit 77-1070



Fan shaft
Repair Kit 70-135



Idler Pulley Kit..... 70-199



Idler Pulley Damper
and Seal Kit 70-212

Don't forget:

When purchasing the Fan Shaft repair kit, be sure to ask your dealer for Oil (203-278).



TECH TIP

Any time you service a Thermo King fan or idler shaft, remember to use only approved Thermo King liquid grease for maximum performance.

EVEN THE SMALLEST DETAILS MATTER

GENUINE THERMO KING GASKETS AND HARDWARE

When we design your new Thermo King unit, the key is in the details. Every component, no matter how large or small, is important to the overall quality and performance of your unit. The gaskets and hardware are specially selected, tested and recommended for each Thermo King unit. When maintaining your unit, do not accept imitations – even on the “little things.”



Thermo King offers over 1700 gaskets, hardware components and kits. All gaskets needed for your Thermo King units are available – just ask your dealer!

Gasket Discharge	33-2805
O-Ring	55-2208
O-Ring	33-2019
Gasket	33-1749
O-Ring	33-230
Washer	55-1922
Clip Hose #8.....	55-9416
O-Ring	33-1221
Gasket / O-Ring	33-1223



Don't Forget

Watch for gasket and hardware recommendations throughout this catalog. Do not accept imitations! Only Genuine Thermo King gaskets were designed to keep your unit performing at its best.

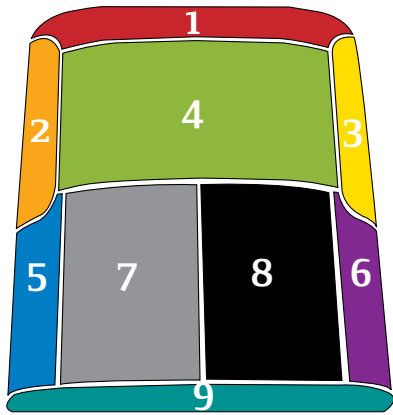


Genuine Thermo King
Structural

Only Genuine Thermo King structural components can deliver the looks and performance your Thermo King unit deserves.

Structural

Genuine Thermo King structural parts are designed with your unit, to fit perfectly and give maximum life. Thermo King doors are manufactured to provide the lowest level of noise, maximum aerodynamics, highest level of scratch concealment, strongest corrosion and impact resistance of any option in the market today. Don't wrap your unit in anything but the best – use Genuine Thermo King parts to make your unit genuine.



Structural (Trailer SB II & III models)

SB II& SB III



1 Top Crown	98-2747
2 Curbside Grille	98-5288
3 Roadside Grille	98-5288
4 Top Door	98-5283
5 Curbside Panel	98-2748
6 Roadside Panel	98-4091
7 Curbside Door	98-3030
8 Roadside Door	
Middle handle	98-3031
Lower handle	99-4489
9 Bottom Panel	98-4653

SB III Spectrum



1 Top Crown (White)	98-6769
Paintable	98-6770
2 Curbside Grille (Black)	98-7302
White	98-7469
Grey	98-7470
Chrome	98-7471
3 Roadside Grille(Black)	98-7197
White	98-7473
Grey	98-7474
Chrome	98-7475
4 Top Door	98-7059
5 Curbside Panel	98-5762
6 Roadside Panel (SR2)	98-7078
(MP6)	98-7079
7 Curbside Door	98-5763
8 Roadside Door	98-7058
9 Bottom Panel	98-7057

SB III Whisper



1 Top Crown	98-5208
2 Curbside Grille	98-5210
3 Roadside Grille	98-5288
4 Top Door	98-5283
5 Curbside Panel	98-4488
6 Roadside Panel	92-2406
7 Curbside Door	98-4480
8 Roadside Door	98-5401
9 Bottom Panel	98-4653

Don't forget:

For easier install, don't forget hardware kits:

Curbside Door

90-260 – SBII/III
90-264 – Whisper

Roadside Door

90-262 – SBII/III (Middle handle)
90-259 – SBII/III (Lower handle)
90-263 – Whisper

Complete parts lineup available at your Thermo King dealer

Structural (Trailer SB-110, 210, 310 and 400 models)



SB models

① Top Crown	98-6769
② Curbside Grille (Black)	98-7032
White	98-7469
Grey	98-7470
Chrome	98-7471
③ Roadside Grille (Black)	98-7197
White	98-7473
Grey	98-7474
Chrome	98-7475
④ Top Door	98-7059
⑤ Curbside Panel	98-5762
⑥ Roadside Panel(SR2)	98-7078
(MP6)	98-7079
⑦ Curbside Door	98-5763
⑧ Roadside Door	98-7058
⑨ Bottom Panel	98-7057

Structural (Truck MD and TS models)



MD-100, 200 or 300

① Front Cover	98-6679
② Engine Door	98-6681
③ Roadside Door	92-2992
④ Bottom Panel	98-6680

TS-200 and 300 models

① Front Cover	(1/01 and after)	98-5988
② Engine Door	(7/01 to 7/04)	90-362
	(After 7/04)	98-7018
③ Roadside Door	(7/01 to 7/04)	98-5989
	(After 7/04)	98-7017
④ Bottom Panel	(7/01 to 7/04)	98-6617
	(After 7/04)	98-7021

TS-500 and SPECTRUM models

① Front Cover	98-6159
② Engine Door	(7/01 to 7/04)
	(After 7/04)
	98-7085
③ Roadside Door	(7/01 to 7/04)
	(After 7/04)
	98-7056
④ Bottom Panel	(7/01 to 7/04)
	(After 7/04)
	98-6441
	98-7046

Structural (Truck T-Series models)



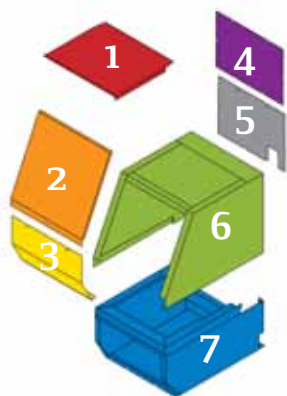
T-500, 600, 600R, 800 and 800R

1 Front Cover	98-8019
2 Engine Door	98-8023
3 Roadside Door	98-8024
4 Bottom Panel	98-8017
5 Belly Band	98-8018

T-1000 and SPECTRUM Models

1 Front Cover	98-8022
2 Engine Door	98-8023
3 Roadside Door	98-8024
4 Bottom Panel	98-8017
5 Belly Band	98-8018

Structural (TriPac)



Tier 1

1 Top Cover	92-5502
2 Front Top Cover	98-7400
3 Bottom Front Cover	92-5503
4 Top Rear Panel	98-7408
5 Bottom Rear Panel	98-7409

Tier 2 (Before 3/06)

1 2 Top Cover	98-7500
3 Bottom Access Panel	98-7234
4 Top Rear Panel	98-7300
5 Bottom Rear Panel	98-7301
6 Upper Enclosure	98-7236
7 Lower Enclosure	98-7237

Tier 2 (After 3/06)

1 2 Top Cover	98-7507
3 Bottom Access Panel	98-7501
4 Top Rear Panel (Before 10/06)	98-7495
5 Bottom Rear Panel	98-7496
10/06-1/08	98-7583
After 1/08	92-6721
6 Upper Enclosure	98-7498
7 Lower Enclosure	98-7497



Genuine Thermo King
Accessories

Innovative and built to last, these quality accessories are designed to save you money by keeping you on the road and saving fuel.

EON Battery



Dry Cell Technology

The EON battery uses Absorbed Glass Mat (AGM) technology to offer, in one box, the characteristics of two separate batteries. It can deep cycle as well as provide enormous cranking power in one durable package.

Superior Cranking and Fast Charge Capability

The 5-second cranking power of the EON is double to triple that of equally sized conventional batteries, even at extremely low temperatures.

Threaded Post	203-550
Smooth Post	203-551

ReliaMax Batteries



Reliable Power

ReliaMax batteries provide reliable cranking power in even the harshest conditions. Because battery life is directly related to environmental temperature, it's essential to choose the correct battery for your operating conditions to maximize battery life. Lower cold cranking amp (CCA) batteries will outlast higher CCA batteries in the same operating conditions, so choose only the CCA necessary. Thermo King offers ReliaMax batteries in 750 CCA for warmer climates and 925 CCA for colder climates.

Part Number	Cold Cranking Amps	Reserve Capacity @25 AMPS (minutes)	Weight (lbs.)
925N Cold - Warm			
203-732 Post (203-736 Canada)	925	180	60
203-733 Stud (203-737 Canada)	925	180	60
750S Warm - Hot			
203-730 Post (203-734 Canada)	750	180	59
203-731 Stud (203-735 Canada)	750	180	59

EON Power Pack



Economical auxiliary power for operating lights

- Avoid dead truck batteries
- Powered by a long-lasting EON battery
- Easy to install
- Weatherproof enclosure

KIT INCLUDES:

- Low voltage disconnect to maximize battery life
- Weatherproof switch with integrated 45-minute timer
- Charging circuit to connect system to reefer or truck alternator

For Interior Lights 40-999

With Lift Gate Charging 40-1033

External Battery Charging Kit



Keep your lift gate or other accessories working all day!

- Reefer alternator charges lift gate or other battery
- Reefer battery is isolated from external current draw to ensure continuous starting power
- Disconnects during lift gate operation and retains power capacity for refrigeration needs
- Thick 4-gauge wire promotes rapid charging

60 ft. of cable 40-873

30 ft. of cable 40-904

No cable 40-905

PrimAir™ Chutes



Chute Systems

PrimAir chutes are designed to provide uniform temperatures throughout the entire trailer to ensure optimum cargo protection. Fits all SB and SB+ series units. PrimAir Split Air Chutes also available to minimize loading damage.

43 ft. Vinyl Air Chute.....	201-3030
38 ft. Vinyl Air Chute	201-3022
43 ft. PE Air Chute.....	201-3034
38 ft. PE Air Chute.....	201-3035
43 ft. Vinyl Air Chute with Rivets	201-3037
38 ft. Vinyl Air Chute with Rivets	201-3029
43 ft. PE Air Chute with Rivets	201-3040
38 ft. PE Air Chute with Rivets	201-3041
10 inch Offset Adapter Bracket	201-3023
17 inch Offset Adapter Bracket	201-3024
Adapter Bracket Carrier X units	201-3039
Nylon Drive Rivets – 60 pack.....	51-1895
48 ft. Vinyl Split Air Chute	TK-RMSD-48T
48 ft. Mesh Split Air Chute	TK-RMSD-48TMSH

PrimAir™ Bulkheads



A two-piece Return Air Bulkhead is also available with independent pallet stops for replacement of high-impact area only.

Return Air Bulkheads

The PrimAir bulkhead's support pods have been uniquely designed and positioned so that return air actually mixes to deliver a more consistent temperature upon entering the evaporator coil. That results in a more efficient operating unit that delivers better cooling to the cargo and saves energy. Heavy duty bulkhead offers 40% thicker design for added durability.

Standard White.....	98-6218
Standard Black.....	98-6217
Heavy Duty White	98-8275
Two-Piece	TK-VORTEX

PrimAir™ Insulated Bulkheads



Insulate Multi-Temp Compartments

PrimAir™ insulated bulkheads are designed and constructed for exceptional durability at an extremely light weight. They are easy on loaders and easy on drivers.

- Insulated BulkheadTK-PRIMAIR-IB
- Nylon Web StrapESTRAPKIT-REF
- Adjustable Vent VENT

LUBRICANTS

Lubricants for increasing the life of critical components.



Thermo King offers a variety of Chevron lubricants for increasing the life expectancy of critical components within your refrigeration unit. Lubricants available through this program include motor oil, engine coolant, transmission fluid, grease, and hydraulic oil - all available in various package sizes. Proper use of these lubricants helps to maximize reefer efficiency, extend service intervals and increase the overall life of the equipment. Please contact your local Thermo King dealer for more information on this program.

Remote Status Lights and Combo Displays



Status Only Display

Provides on-road visibility to basic functions, including check alarm codes and shutdown alarms.



Fuel Combo Display

Offers all features of Status Only display, plus fuel level display and low fuel, check alarm and shutdown alarms.



Triple Combo Display

Offers all features of other displays plus temperature display in up to three different compartments.

Display	Status & Alarms	Fuel Level	Temperature	Fuel Tank	Gauge Kit Part #
Status Only	✓				40-980
Status Only (Flush)	✓				40-981
Fuel Combo	✓	✓			40-1068
Fuel Combo	✓	✓		✓	40-1070
Triple Combo	✓	✓	✓		40-1064
Triple Combo	✓	✓	✓	✓	40-1063

All displays are corner-mount except where noted. 1-year parts warranty.

Fuel Tanks



Lightweight and durable

Thermo King aluminum fuel tanks are designed to meet your fueling needs and are available in capacities from 30 to 110 gallons. Anti-siphon device available to prevent fuel theft.

TRAILER	Part #	Capacity (Gal)
	12-497	30
	12-650	50
	12-843	75
	12-644	90
	12-789	110
TRUCK	Part #	Capacity (Gal)
	12-927	30
ANTI-SIPHON DEVICE	Part #	
	11-9631	

Electronic Door Switches



Electronic Door Switches offer:

- Improved temperature control
- Low-profile design
- Durable, long-lasting weather/waterproof construction
- Electronic solid-state design
- Shut down of reefer in non-cooling situations — less run time means less fuel used and lower maintenance costs
- Completely retrofittability on all trailers and trucks or available as a factory option

2-Wire Switch.....	40-907
3-Wire Switch.....	40-906

Protective Guards



SB Door Guard

Protect your unit doors and controller with durable guards designed to take the impact from cables or branches. Guards easily mount directly to SB units without compromising the trailer swing radius or service access.

Part Number..... 909-130



S-3 Evap Guards

Constructed of high-strength aluminum, these guards are designed to protect remote evaporators from damage during loading and unloading.

Part Number..... 90-320



SB Intermodal Guard

Protect units from damage during intermodal shipment by truck and rail with this heavy-duty steel protection package.

Part Number..... 909-131

Thermo King Telematics Solutions



TrackKing

TrackKing, available in satellite or cellular, delivers operational efficiencies going beyond the cold chain to vehicle and driver management. This system provides fleet managers with a dashboard of cost critical information by trip, by driver and by vehicle, allowing them to quickly gauge the productivity of their fleets.

Cellular

TrackKing Truck.....	40-1045
TrackKing SR-2	40-1046
TrackKing Non SR-2 w/DAS	40-1047

Satellite

TrackKing mP-VI 1 way kit	40-1050
TrackKing SR-2 1 way or 2 way kit	40-1051
TrackKing mp-VI 2 way kit	40-1052



Temperature Management

- Optimum temperature management to ensure top quality product delivery
- Lower service costs and unit down-time with real time alarm notification
- Manage the refrigeration unit remotely with 2-way control
- Help ensure cargo integrity



Vehicle TrackKing

- Accurate location of your fleet at all times on a map
- Increased cargo security through asset visibility
- Locate Thermo King dealers easily on a map for service support
- Monitor vehicle routes by replaying journey on a map (cellular only)
- Theft protection with battery backup (cellular only)



Fuel Management

- Optimize fuel consumption by trip, vehicle and driver
- Minimize environmental impact with better fuel management
- Lower fuel costs with improved driving styles



Vehicle Management

- Increase fleet uptime
- Lower total cost of fleet ownership with accurate vehicle data
- Improve fleet utilization with route management

Complete parts lineup available at your Thermo King dealer

DAS (Data Acquisition System)



The industry's most powerful independent data recorder.

- Provides independent documentation of cargo temperatures during transport
- Developed and tested to comply with all European temperature recording requirements
- Memory and real-time clock independent of unit controller
- Up to six independent temperature sensors
- Data output to printer or PC
- Supported by user-friendly Thermo King Wintrac™ software
- Fully interactive with most Thermo King truck and trailer controllers

DAS (Data Acquisition System) Software..... 45-2231

Wintrac™ 4 Software



A fast, easy-to-use Windows™ based reporting utility for Thermo King data loggers. Quick, easy answers to performance questions.

- Fast performance analysis — easily define and search for critical data you need
- Innovative, easy-to-use graphical user interface
- Automatic, comprehensive management of files
- Fast, easy downloads
- Fast, flexible viewing of graph and table Reports
- Fast, convenient setting of trip headers
- Fast retrieval and setting of data logger set-up features
- Comprehensive trip file import/export capabilities

Wintrac 4.8. (1 Full Install)..... 204-1919

Wintrac 4.8. (1 Upgrade) 204-1920

i-Box



Universal translator for communications. — Enables data transfer for third party telematics providers.

- Enables third party remote communications, works with any communications system
- Jointly developed with transport industry leaders
- Robust construction, built to last
- Connects to any existing SMART REEFER®

iBox (1-way)40-1060

iBox (2-way)40-1058*

**contact your dealer for legacy part information*

Espar Heaters



The ultimate in idle reduction and driver comfort.

Espar heaters save money and fuel by eliminating the need to idle your truck in addition to enhancing driver comfort and increasing driver retention. Espar heaters also comply with anti-idling regulations and stricter emissions standards.

Thermo King offers the full line of Espar heaters and repair parts. Contact your Thermo King dealer for more information!

Bunk Heat Models	BTU's
Airtronic D2-D4.....	7,500-13,650

Engine Pre-Heat Models	BTU's
Hydronic 5-35.....	17,000-120,000

School Bus Heat Models	BTU's
E-Guardian 5-12	4,100-42,000

E-Series Cargo Heaters



Protect perishables from cold temperatures

E-Series cargo heaters protect valuable loads from low temperatures using high volume heat output and high airflow for even temperature distribution. E-Series heaters have DOT approval for use with many hazardous materials. Various sizes of heaters are available for all applications

E-13 Heater	80-212
E-18 Heater	80-213
E-28 Heater	80-210



E-13

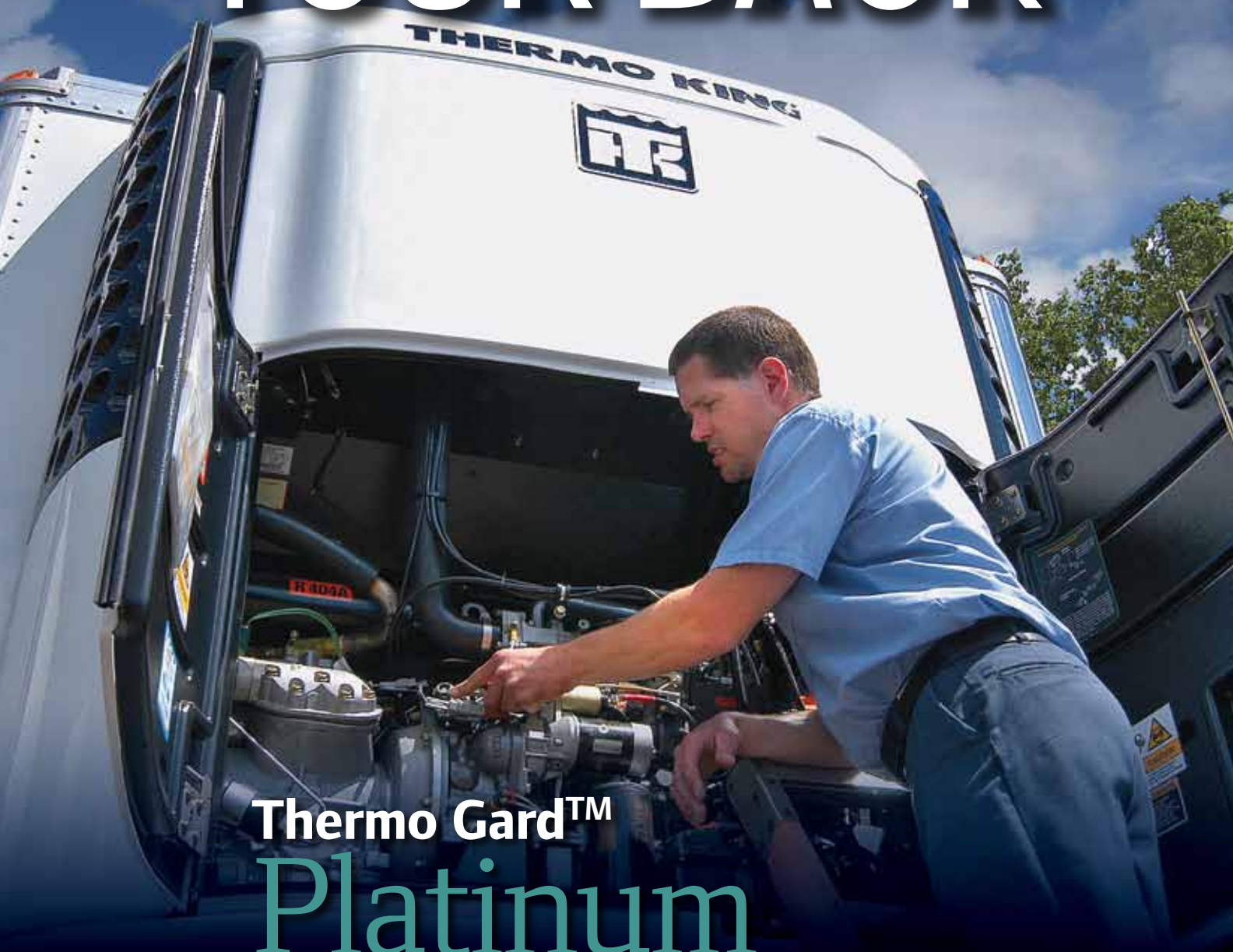


E-18



E-28

WE'VE GOT YOUR BACK



Thermo Gard™ Platinum

Fixed Costs. Easy Budgeting. No Surprises.



Contact your Thermo King dealer
or call (952) 886-6014 to enroll in a Thermo Gard maintenance
program for your reefer units and TriPac™ systems.



Providing equipment and services to manage controlled-temperature environments for food and other temperature-sensitive products, our Climate Control Technologies sector encompasses both transport and stationary refrigeration solutions. Our product brands include Thermo King®, a world leader in transport temperature control systems, and Hussmann®, a manufacturer of refrigeration and food merchandising equipment.

www.thermoking.com www.hussmann.com www.ingersollrand.com

Distributed by: