

Performance DATA

Application & Refrigerant LBP R600a

Voltage	Model	Displace- ment cm3	*1) Capacity (W)						*2) C.O.P.		*3) Motor type	Compressor cooling *4)			Net weight kg		Oil charge cm3	
			Evaporating temperature						Run. capa.									
			-30°C	-25°C	-23.3°C	-20°C	-15°C	NO	YES				ST	OC	FC	ST/FC	OC	ST/FC
220V 50Hz	DG91E10RAX5	9.07	97	137	152	183	236	-	1.58	RSCR		O	-	-	9.3	-	280	-
*5) 220-240V 50Hz	DG91E87RAW5	9.07	88	135	152	185	238	1.53	1.64	RSIR/RSCR		O	-	-	9.9	-	280	-
	DG100E87RAW5	10.26	110	158	176	211	269	1.54	1.64	RSIR/RSCR		O	-	-	9.9	-	280	-
	DG110E10RAW5	10.86	120	167	185	221	281	1.53	1.64	RSIR/RSCR		O	-	-	9.9	-	280	-
	DG125E11RAW5	12.48	144	196	216	258	330	1.53	1.66	RSIR/RSCR		O	-	-	9.9	-	280	-

Notes :

1) W=Capacity (kcal/h) / 0.860

3) RSIR Resistance Start Induction Run

4) ST Static cooling

RSCR Resistance Start Capacitor Run

OC Oil cooling

2) C.O.P. = $\frac{\text{Capacity(kcal/h)} / 0.860}{\text{Motor input(W)}}$

5) Based on 220V

FC Fan cooling

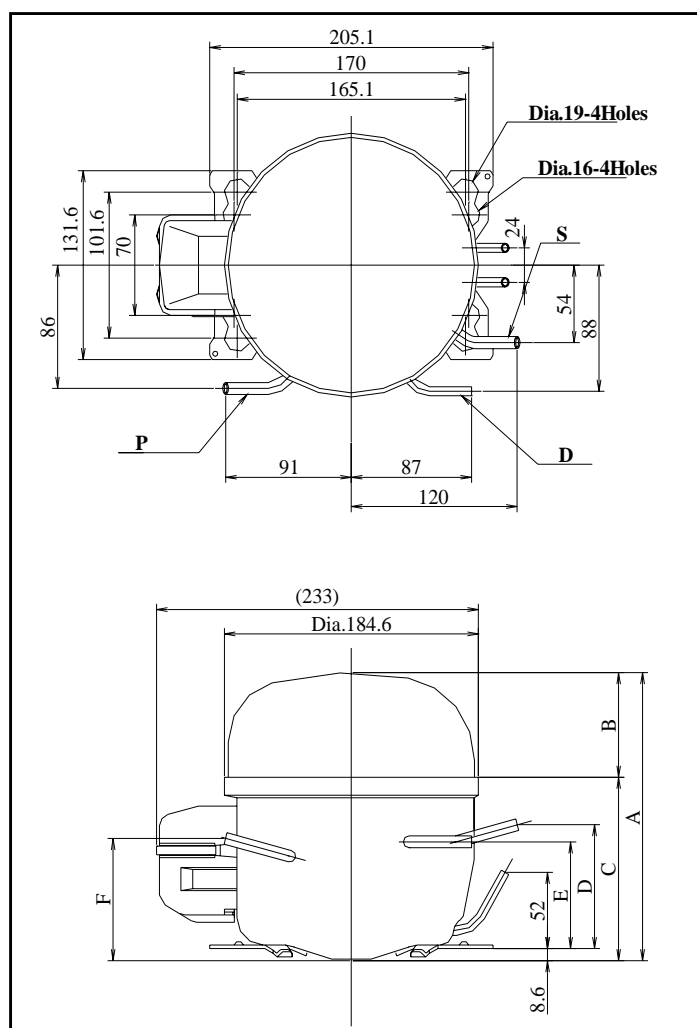
Dimensions

Application & Refrigerant LBP R600a

Voltage	Model	A	B	C	D	E	F	Tubes		
								D:Discharge	S:Suction	P:Process
220V 50Hz	DG91E10RAX5	195.2	73.0	122.2	84.7	71.2	86.0	5.1 I.D.	6.1 I.D.	6.1 I.D.
220-240V 50Hz	DG91E87RAW5	195.2	73.0	122.2	84.7	71.2	86.0	5.1 I.D.	6.1 I.D.	6.1 I.D.
	DG100E87RAW5	195.2	73.0	122.2	84.7	71.2	86.0	5.1 I.D.	6.1 I.D.	6.1 I.D.
	DG110E10RAW5	195.2	73.0	122.2	84.7	71.2	86.0	5.1 I.D.	6.1 I.D.	6.1 I.D.
	DG125E11RAW5	195.2	73.0	122.2	84.7	71.2	86.0	5.1 I.D.	6.1 I.D.	6.1 I.D.

(unit: mm)

220-240V 50Hz



NOTES: All data covered by this catalog are given as general information only.

Since we are constantly improving our products, the specifications and availability are subject to change without notice.