

SHARP SERVICE MANUAL

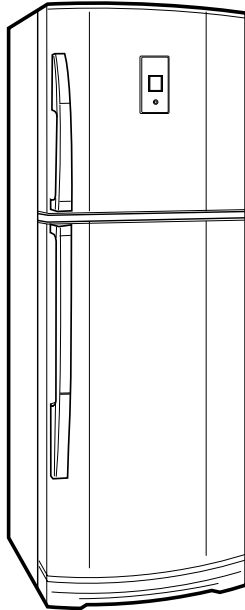
S4506SE47ATUTT



REFRIGERATOR-FREEZER

MODELS

SJ-P40M-PLM
SJ-P45M-PLM



In the interests of user-safety (Required by safety regulations in some countries) the set should be restored to its original condition and only parts identical to those specified should be used.

DESTINATIONT

Refrigerant; HFC-134a

Refer to "HFC-134a COOLING UNIT" Service Manual for handling this refrigerant.

TABLE OF CONTENTS

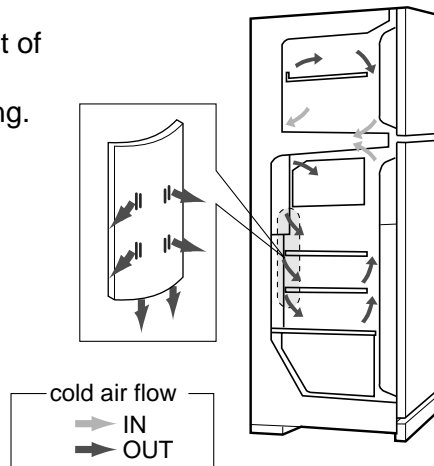
	page
CAUTIONS AND INFORMATIONS	2
SPECIFICATIONS	3
DESIGNATION OF VARIOUS PARTS	4
DIMENSIONS	5
LIST OF ELECTRICAL PARTS	7
WIRING DIAGRAM	8
FUNCTIONS	11
ASSEMBLING PROCEDURES OF MAIN PARTS AND CAUTIONS	15
COOLING UNIT	22
REPLACEMENT PARTS LIST	24

CAUTIONS AND INFORMATIONS

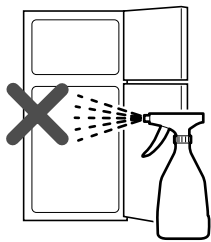
In case of following troubles, the cause is not related with the failure of refrigerator.
Please mention the correct way to the customer for the use of refrigerator when the repairing.

1. Some foods froze in the refrigerator compartment.

Do not place food directly in front of cold air outlet.
This may lead to the food freezing.



2. Some plastic parts were cracked or split.



Some household cleaning chemicals may affect the internal food liner and plastic parts resulting in splitting or cracks occurring.

When cleaning all plastic parts inside this refrigerator, only use diluted dishwashing liquid(soapy water). Make sure that all plastic parts are thoroughly rinsed with water after cleaning.

3. IT IS NORMAL for the refrigerator to produce the following sounds.

Cracking or crunching sound;

Sound produced by expansion and contraction of inner walls and internal parts during cooling.

Squeaking sound;

Sound produced by expansion and contraction of internal parts.

Sound of flowing fluid (gurgling sound, fizzing sound);

Sound of refrigerant flowing in pipes (sound may become louder from time to time).

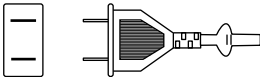
SPECIFICATIONS

Items		SJ-P40M	SJ-P45M
Type		2-Door	2-Door
Outer dimensions (Including spacer)	Height	1700mm(66.9")	1820mm(71.7")
	Width	680mm(26.8")	680mm(26.8")
	Depth	660mm(26.0")	660mm(26.0")
Rated storage volume (Rated volume)		360 liter (12.7cu.ft) F: 109liter (3.8 cu.ft) R: 251 liter(8.9 cu.ft)	400 liter (14.1 cu.ft) F: 109 liter (3.8 cu.ft) R: 291 liter(10.3 cu.ft)
Gross volume		383 liter (13.5cu.ft) F: 117liter (4.2 cu.ft) R: 266 liter(9.3 cu.ft)	423 liter (14.9 cu.ft) F: 117 liter (4.2 cu.ft) R: 306 liter(10.7 cu.ft)
Defrosting	System	Heater system	
	Start	Automatic	
	Finish	Automatic	
Temperature control		Automatic (Adjustable)	
No-frost freezer		Yes	
Interior lamp		1	
Caster		2	
Evaporating pan		1	
Refrigerator Compartment	R glass shelf ass'y	2	
	V glass shelf ass'y	1	
	Vegetable case	1	
	V parting plate	1	
	R door pocket	1	
	Egg tray	1	
	R door pocket S	2	
	Bottle pocket	1	
	Bottle stopper	1	
	Door pocket	1	
	Fresh case	1	
Freezer Compartment	Freezer tray	1	
	Ice cube maker	Twin ice cube maker	
	Ice storage box	1	
	Door pocket	2	
Deodorizing unit		2 (Honeycomb type)	
Plasmacluster		Yes	

RATING

Items		SJ-P40M	SJ-P45M
Rated voltage	(V~)	220-240	
Rated frequency	(Hz)	50	
Climate class		T	
Rated current	(A)	0.96	
Rated input of heating elements	(W)	128	
Refrigerant (Charging quantity) [Non-flammable]		HFC-134a(105g)	
Insulation Blowing Gas [Flammable]		Cyclo pentane (HC)	
Net Weight	(kg)	70	72

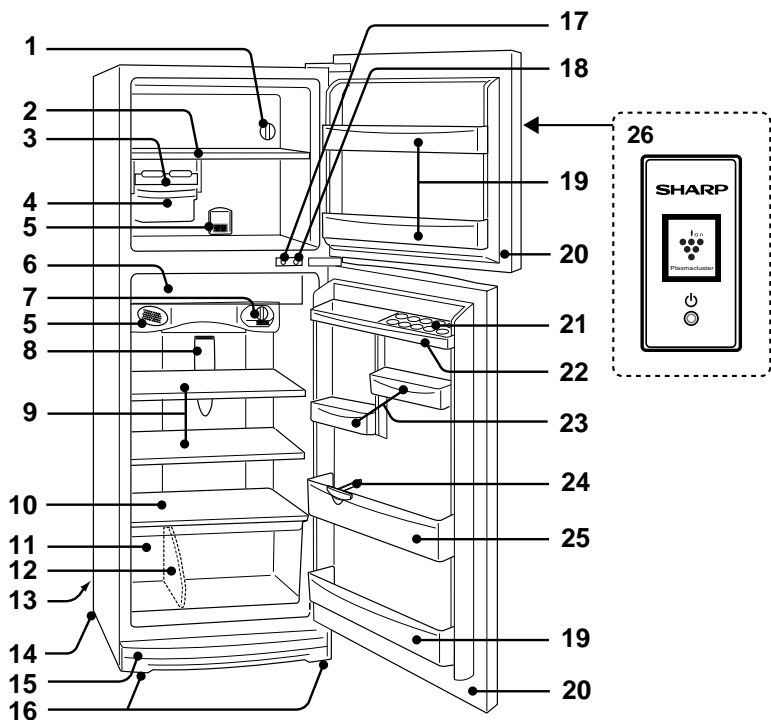
PLUG TYPE

Plug cord	2 pin		
Plug type	A-1		
Destination mark	T		

Items	-PLM
Outside color	Silver
Inside color	White

DESIGNATION OF VARIOUS PARTS

The names in parenthesis are the denominations used in the REPLACEMENT PARTS LIST.



1. Freezer temp. control knob
2. Freezer shelf(Freezer tray)
3. Ice cube maker
4. Ice cube box(Ice storage box)
5. Deodorizing unit
6. Fresh case
7. Refrigerator temp. control knob
8. Light(Lamp)
9. Refrigerator shelf (R grass shelf ass'y)
10. Shelf (V grass shelf ass'y)
11. Vegetable crisper(Vegetable case)
12. Divider(V parting plate)
13. Evaporating pan
14. Casters
15. Foot cover(Ventilating grille)
16. Adjustable feet(Adjustable leg ass'y)
17. Fan switch
18. Fan & light switch
19. Utility pocket(Door pocket)
20. Magnetic door seal(Door packing)
21. Egg holder(Egg tray)
22. Egg pocket(R door pocket)
23. Small pocket(R door pocket S)
24. Bottle guard(Bottle stopper)
25. Bottle pocket
26. Plasmacluster panel

Figure D-1. External Description

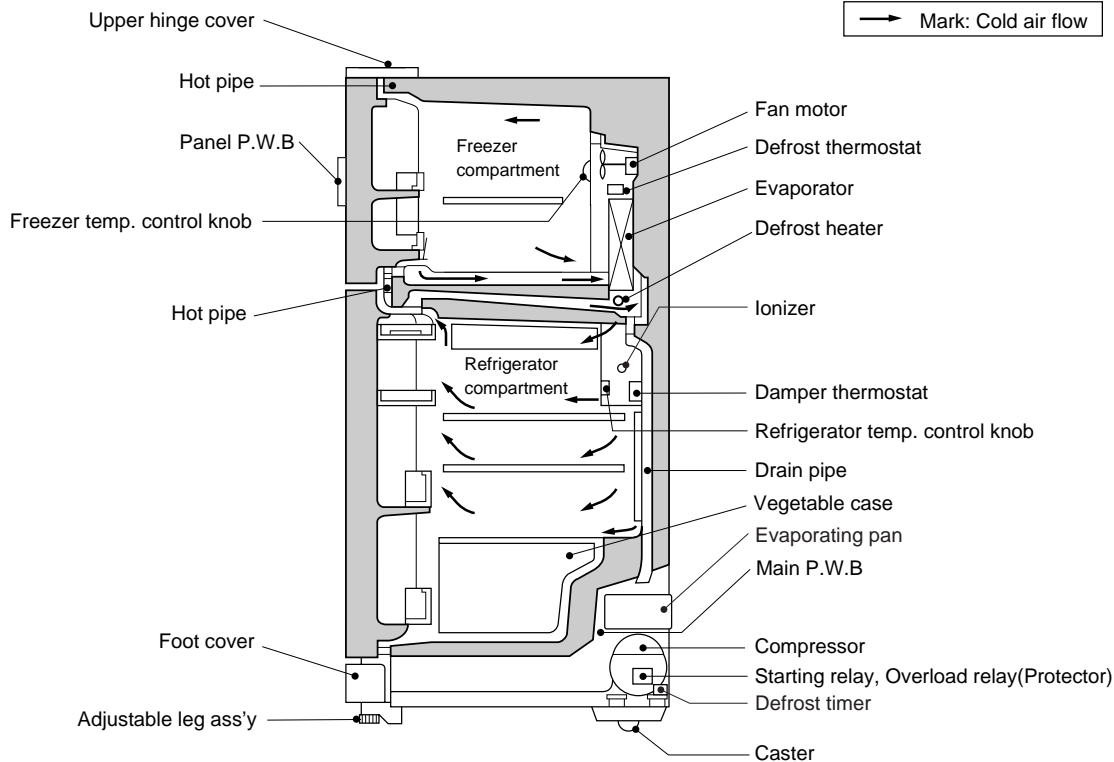


Figure D-2. Constructions

DIMENSIONS

OUTER DIMENSIONS AND CLEARANCE

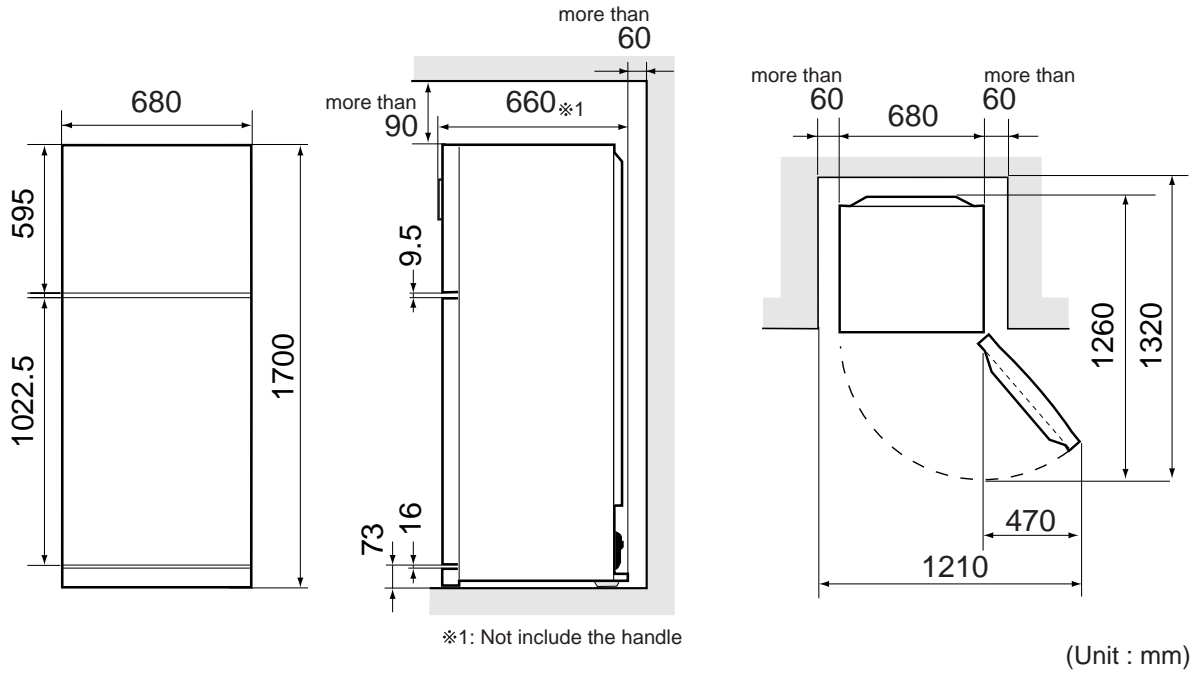


Fig. E-1 (SJ-P40M)

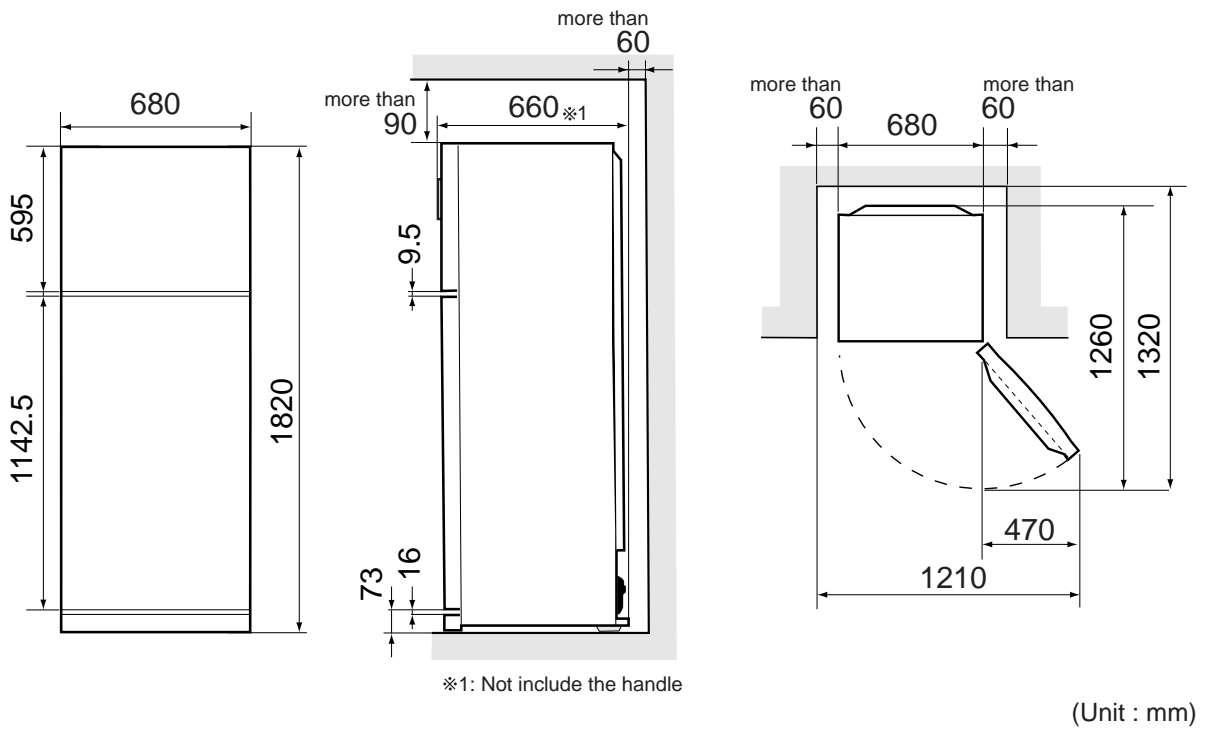


Fig. E-2 (SJ-P45M)

INNER DIMENSIONS

The dimensions between shelves can be changed by setting the shelves on the other rails.

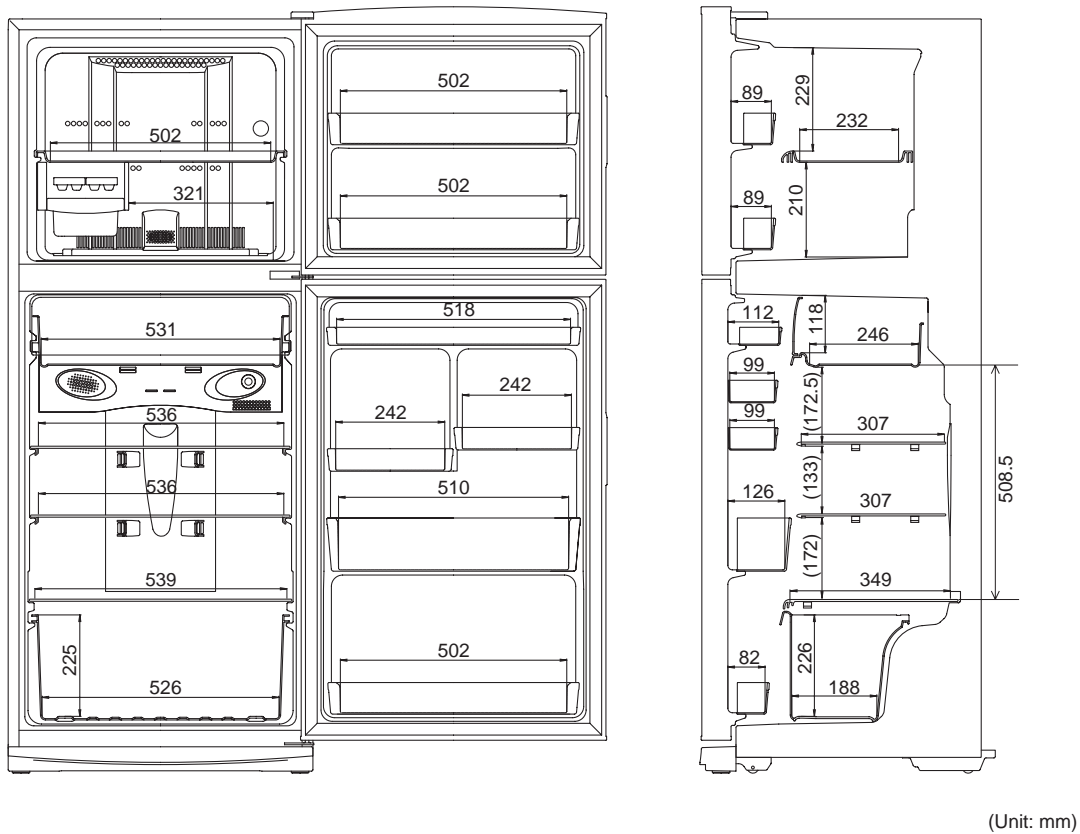


Fig. E-3 (SJ-P40M)

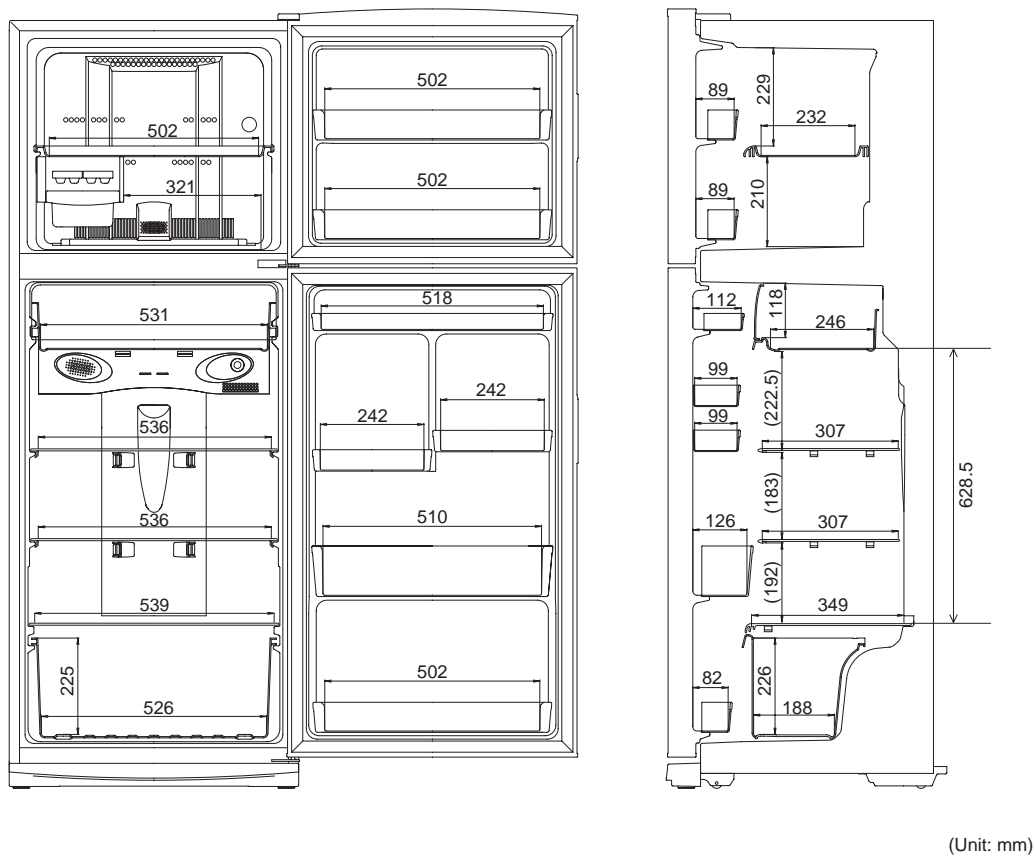
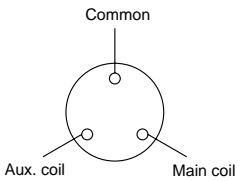


Fig. E-4 (SJ-P45M)

LIST OF ELECTRICAL PARTS

ITEMS	TYPE NAME	RATING	SPECIFICATIONS
Thermostat	MM1-8149	125V 6A 250V 3A	(At normal notch) ON/OFF : -20 / -25°C
Defrost thermostat	S101	250V 8A	Open/Close : 8 / 1°C
Thermo. fuse	SF70E	250V 10A	Working temp. : 70°C
Fan motor	3R00121A	220-240V 50/60Hz	Working with ø100 fan
Defrost heater	MM6-4264	220-240V 378Ω	140W at 230V
Door switch	DSD-5	250V 0.25A	4 terminals push-button type
Damper thermostat	MM1-6173	—	Open/Close : 5 / 0°C
Defrost timer	ND0804M2PR	220-240V 50/60Hz	Integration type Cycle time : 8h43m/7h16m(50/60Hz) Delay time : 4m50s/4m02s(50/60Hz)
Lamp socket	—	250V 1A	E-12(Hard plastic body type)
Lamp	—	240V 15W	E-12
Compressor	FL1568SY	220-240V/50Hz	Cooling capacity : 188W (50Hz) Main coil : 13.3Ω Aux. coil : 25.6Ω (at 25°C) 
Starting relay	PETOSAT	—	22 Ω 300V 3 terminals
Overload relay(Protector)	1.8C36A1	—	Open/ Close : 130/60°C
Ionizer-K(Plasmacluster unit)	FTRN-A014CBKZ	DC12V	3.5kV p-p

WIRING DIAGRAM

Be sure to replace the electrical parts with specified ones for maintaining the safety and performance of the set.

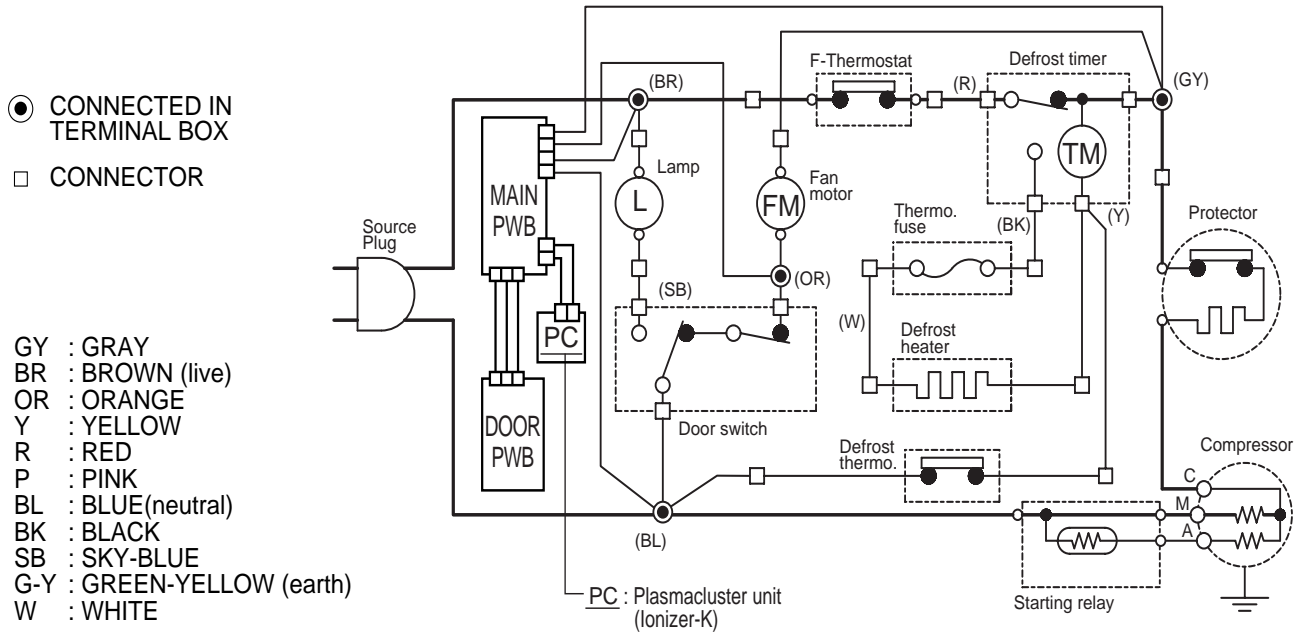


Figure W-1. Wiring Diagram

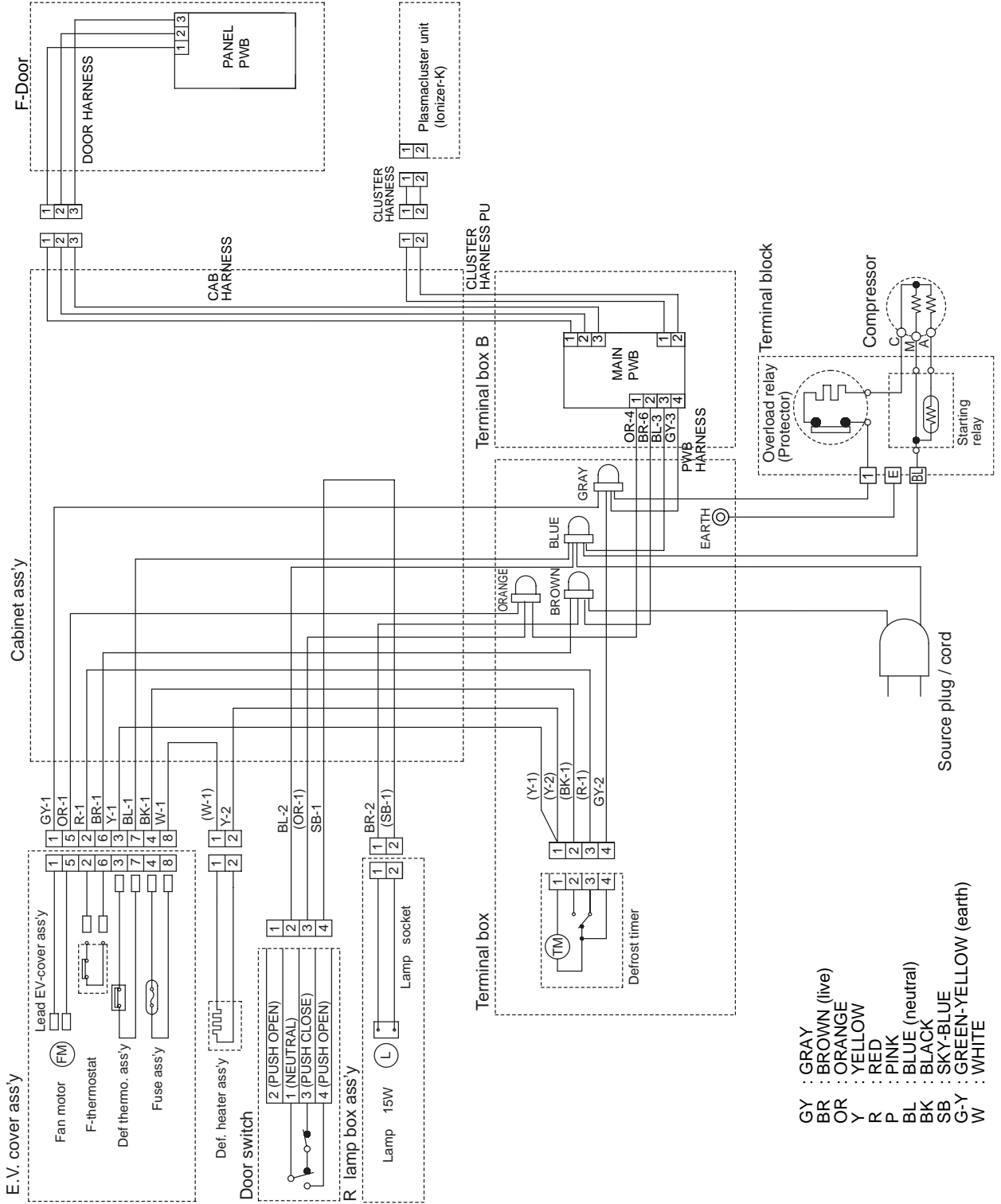


Figure W-2. Electric Accessories Layout

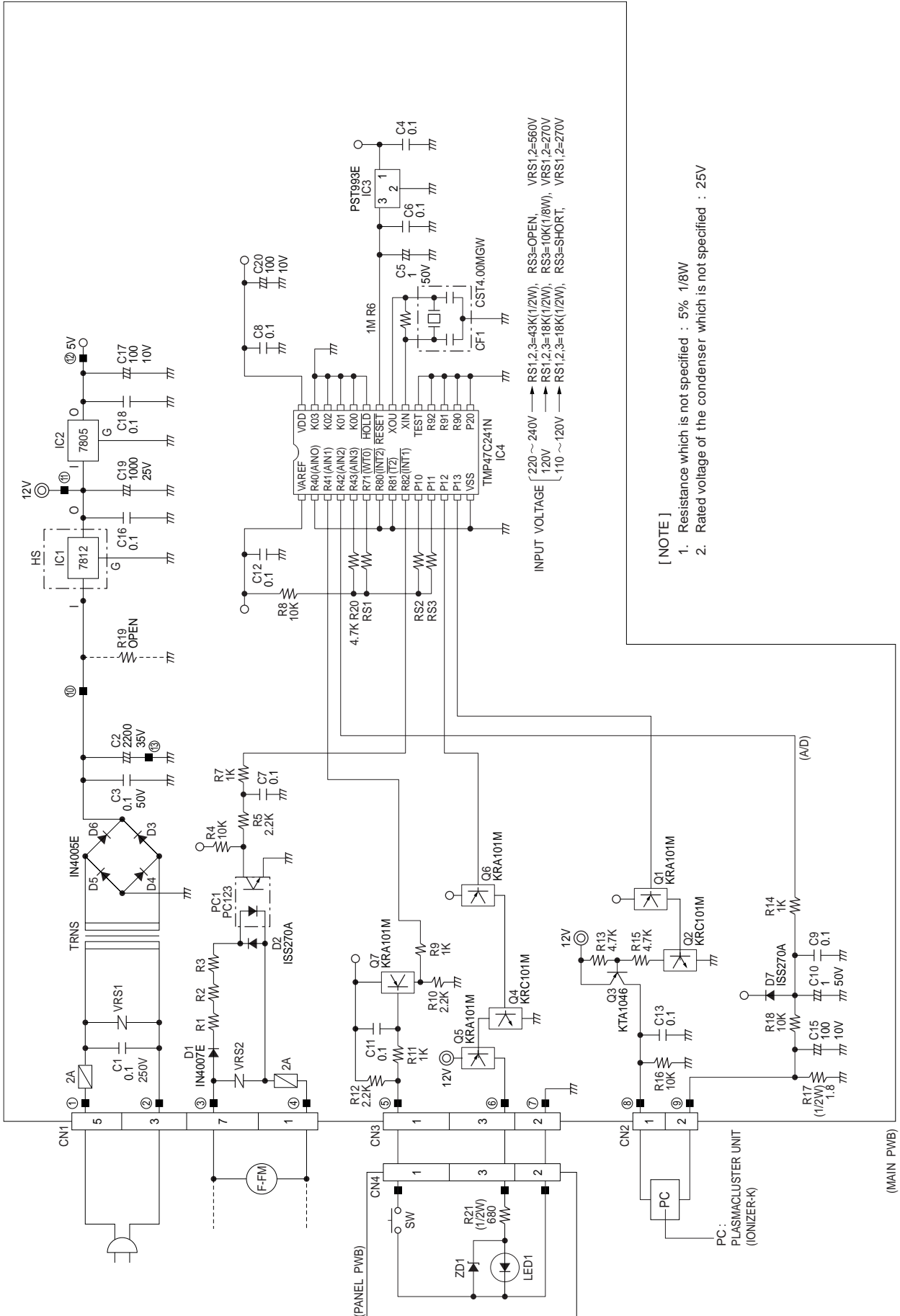


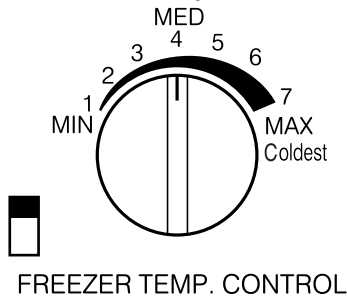
Figure W-3. Circuit Diagram

FUNCTIONS

1. ADJUSTABLE TEMPERATURE CONTROL

(1) Temperature control of freezer

- Thermostat (senses freezer temperature) operates on ON/OFF switchover to control the compressor and cool air circulating fan, and allows the freezer temperature to keep at a suitable temperature.
- However adjust the freezer temp. control knob as follows depending upon the storing condition of foods.



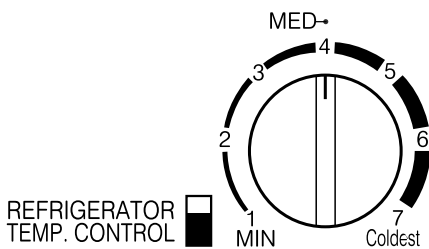
FREEZER TEMP. CONTROL

Figure F-1.

KNOB SETTING	PURPOSE
MAX(Coldest)	● For making ice rapidly or fast freezing.
▲	● When restocking with fresh food.
MED	● For normal freezing.
▼	● For storing frozen food for a short period (up to one month).
MIN	● When frozen food or ice cream is not stored.

(2) Temperature control of refrigerator

- Damper-thermostat senses temperature of the refrigerator and changes the opening angle of the damper automatically. However, as the Damper-thermostat has no function to switch on or off the compressor and fan motor, the freezer temperature control causes temperature in the refrigerator to vary to some extent.
- However, adjust the refrigerator temp. control knob as follows depending upon the cooling condition.



REFRIGERATOR TEMP. CONTROL

Figure F-2.

KNOB SETTING	PURPOSE
Coldest	● For keeping freshness of food longer.
▲	● When the refrigerator does not provide sufficient cooling.
MED	● For normal operation.
▼	● When the refrigerator provides excessive cooling.
MIN	

- NOTE:
- The refrigerator temperature is affected also by the freezer temperature. If the freezer temp. control knob is set at the position "MAX", the temperature tends to be lower than the following values, and if set at near the position "MIN", temperature tends to be higher.
 - If the refrigerator is operated for a long time with the freezer temperature control sets the "MAX" position, foods stored in the refrigerator compartment may also freeze.
 - When refrigerator temperature control sets to the "Coldest", some foods stored may freeze. In this case adjust control set back to the "MED" position.
 - When refrigerator temperature control sets to the "Coldest", some foods stored in Fresh case may also become frozen.

(3) Reference value of temperature

SETTING OF FREEZER TEMP. CONTROL KNOB	MAX (Coldest)	MED	MIN
Freezer temperature	Approx. -21°C	Approx. -18°C	Approx. -15°C

SETTING OF REFRIGERATOR TEMP. CONTROL KNOB	Coldest	MED	MIN
Refrigerator temperature	Approx. 0°C	Approx. 3°C	Approx. 6°C
Fresh case temperature	Approx. -3°C	Approx. 1°C	Approx. 4°C

The values shown above refer to the case where the freezer temp. control knob is set at "MED".

The values shown above refer to the measurement carried out center area and 1/3 of overall height from the bottom at each of the refrigerator and the freezer after machine has been operated at an ambient temperature of 30°C with no food stored and the door closed until the temperature is stabilized.

The values vary depending upon frequency of opening and closing the door, ambient temperature, amount of stored foods and manner of storing foods.

2. DEFROSTING

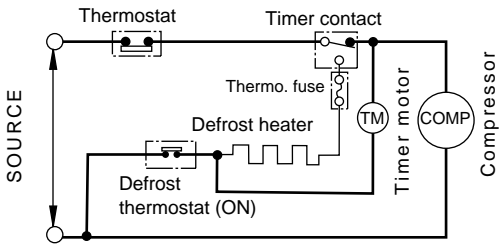
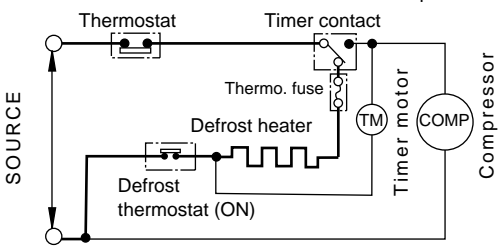
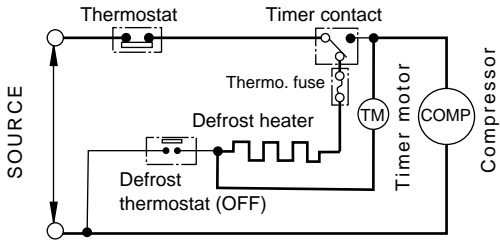
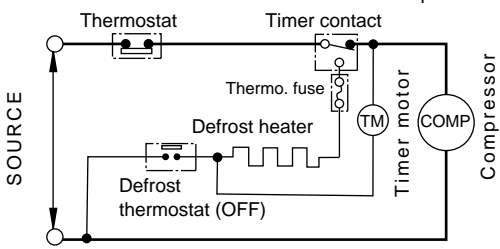
(1) No defrosting operation is necessary

No defrosting operation is necessary. As this machine is so designed that a built-in evaporator cools air and a fan circulates cooled air, neither the freezer nor the refrigerator is frosted, though the evaporator is frosted. The frosted evaporator is defrosted automatically due to the function of defrosting timer and heater, requiring no defrosting operation.

(2) Where is melted frost brought

1. Melted frost is brought into the evaporating pan at the back of the set and is evaporated here by the heat of compressor.
2. Be sure to use Evaporating pan as inserted so as to be level with the outer case.

(3) The following circuit diagrams in the table show automatic defrosting function of the refrigerator with timer and defrost thermostat.

Operation	Electric diagram	Description
<p>1. Cooling (Normal)</p>	<p>● Defrost thermostat ON ● Compressor running ● Timer motor running</p>  <p style="text-align: center;">Figure F-3.</p>	<p>The integration timer integrates running time of the compressor. When it reaches cycle time of defrost timer, the timer contact is changed to start defrosting.</p>
<p>2. Defrosting (Time 20 to 30 min.)</p>	<p>● Defrost thermostat ON ● Compressor stops ● Timer motor stops</p>  <p style="text-align: center;">Figure F-4 .</p>	<ul style="list-style-type: none"> ● The timer contact is changed to start defrosting, the timer motor stops, and power is supplied to the defrost heater. ● It takes about 20 to 30 min. to defrost. When little frosted, the defrosting takes little time. When much frosted, the defrosting takes much time.
<p>3. Drain (Time approx. 5 min.)</p>	<p>● Defrost thermostat OFF ● Compressor stops ● Timer motor running</p>  <p style="text-align: center;">Figure F-5.</p>	<p>When the defrost thermostat becomes OFF, the timer motor starts running. During the operation time (delay time of defrost time) defrosted water is drained outside the refrigerator.</p>
<p>4. Restart (Time approx. 5 min.)</p>	<p>● Defrost thermostat OFF ● Compressor running ● Timer motor stops</p>  <p style="text-align: center;">Figure F-6.</p>	<ul style="list-style-type: none"> ● Timer contact is changed to cooling operation and the compressor starts running and the timer motor stops. ● Defrost thermostat contact becomes ON when it's cooled. And the timer motor starts running. (Figure F-3.)

(4) As a reference to determine the causes of trouble, malfunction and phenomena are described below. Refer to the following when repairing.

1. Disconnection of defrost heater

As off-cycle defrosting is performed, the defrosting time is extremely prolonged. Each time defrosting is started, the freezer temperature rises and a portion of ice and stored foods are melted.

2. Melted thermo. fuse or opened-circuit due to the defect of defrost thermostat.

When the above mentioned trouble occurs in cooling operation, the timer motor does not run, defrosting will not take place, and consequently freezing is caused. In the above mentioned condition, when the timer shaft is turned by hand to defrost, the timer motor runs during the operation time. However, the motor stops from the time when the contact is changed, and freezing causes.

NOTE:

- As the thermo. fuse assembly is intended to prevent dangers, do not use it under shorted condition even for a short period.

3. DEW PREVENTION

The hot pipe, namely D.P.-condenser, is arranged around the flange part of cabinet and the C-partition plate, preventing dew from being generated on the cabinet.

NOTE:

- D.P.-condenser pipe may be felt hot if touched by hand while the compressor is in operation.
- If you are asked about this, please explain that the hot pipe serve to prevent the dew generation.

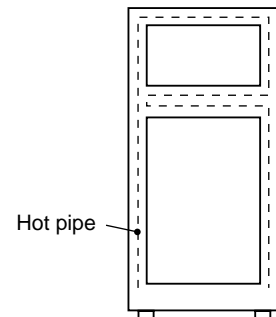


Figure F-7

4. INSPECTION OF INITIAL STARTING

(1) Inspection of cooling unit

1. Set the temperature control knob to "MAX" and check that the compressor starts to operate.
2. Depress the door switch to run the fan and check that cool air is blown out of the cold air outlet of the freezer and the refrigerator.
3. When the compressor does not work, check that the timer is not set to "defrost" position.
4. It takes about an hour and a half or two hours to put food in the refrigerator after starting operation.

NOTE:

- After return the temperature control knob to "MED" position.
- When the refrigerator is operated initially after installed, the compressor may vibrate excessively for 1 to 2 min. However, vibration becomes normal if it is continuously operated.

(2) Inspection of defrost device

Operate the refrigerator for 20 to 30 min. and then check the defrost device in the following procedures :
Allow 5 min. to restart the compressor since immediate starting after stopping will cause unsmooth operation.

1. Turn the timer shaft clockwise with a screw driver.
At this time, make certain the timer clinks and the compressor stops.
2. After more than 5 min., turn the shaft further to operate.
Make certain cooling operation is started again.

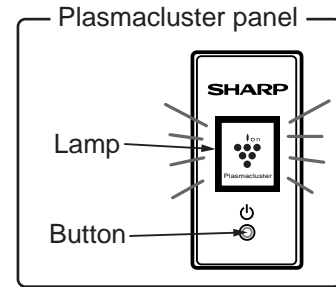
5. PLASMACLUSTER

(1) Plasmacluster is what thing.

The ionizer inside the refrigerator will release cluster ions, which are collective mass of positive and negative ions, into the the freezer and refrigerator compartments.
The cluster ions inactivate airborne fungus.

(2) Plasmacluster Panel

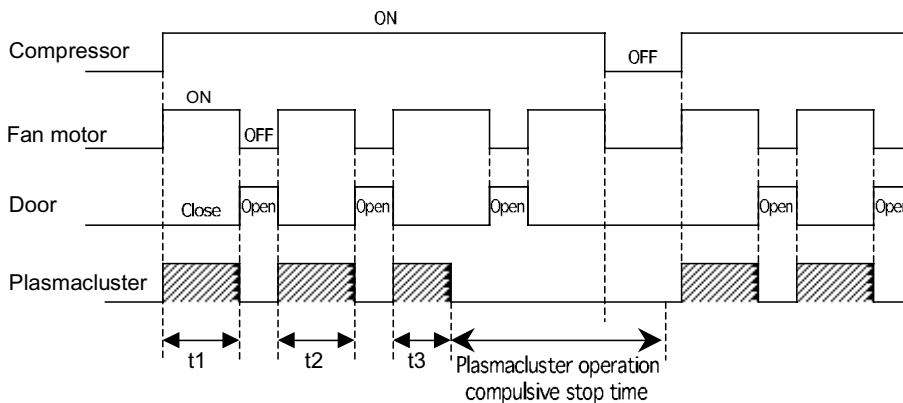
1. When the refrigerator will be operated, the Plasmacluster lamp of the panel will light up.
2. By pushing the button, the lamp goes out or lights up.
3. Under the lamp is lighting, Plasmacluster operation is controlled as follows.



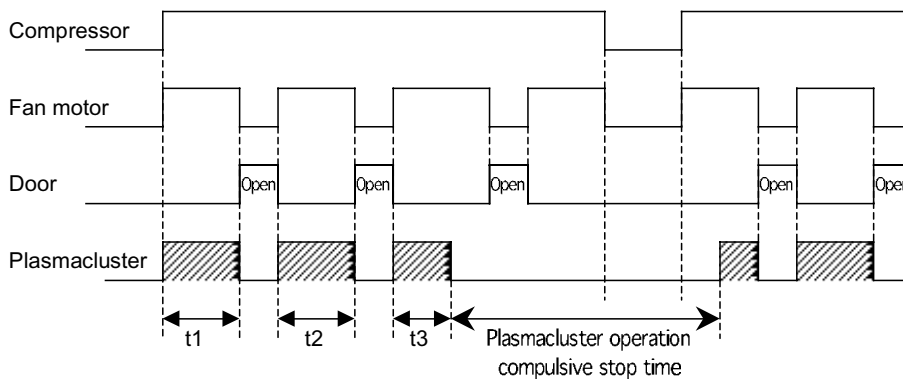
(3) Plasmacluster Control.

1. Plasmacluster operation will be performed when the following conditions gather.
 - 1) Lamp : Under lighting
 - 2) Compressor : Under operation
 - 3) Door : Closed
 - 4) Within "The Plasmacluster operation time".
2. If the sum total of Plasmacluster operation time will reach at the set time ("The Plasmacluster operation Time"), Plasmacluster operation will stop.
3. After an operation stop, the Plasmacluster will be not operated during the set time ("The Plasmacluster operation compulsive stop time").

Time chart A



Time chart B



● The Plasmacluster operation time = $t1 + t2 + t3$

ASSEMBLING PROCEDURES OF MAIN PARTS AND CAUTIONS

CAUTION: DISCONNECT THE UNIT FROM THE POWER SUPPLY BEFORE ANY REPAIRING.

1. R-AIR GUIDER ASSEMBLY

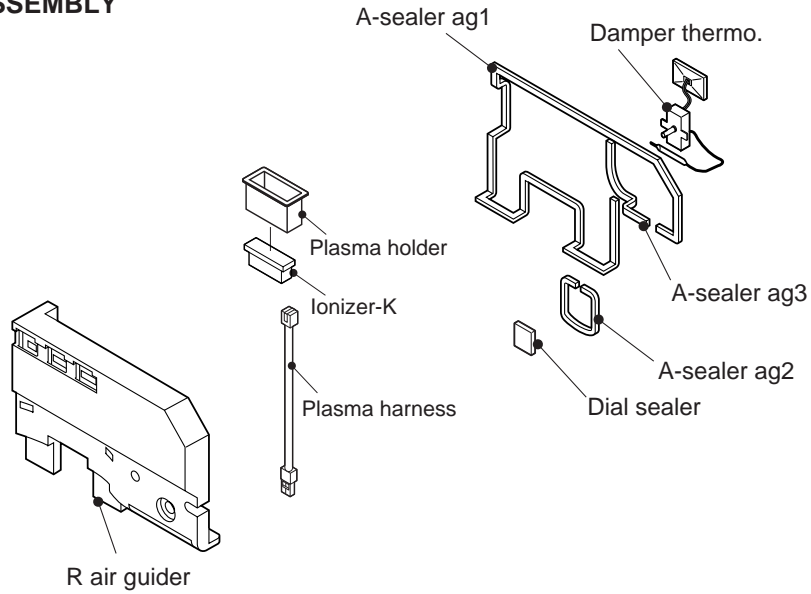
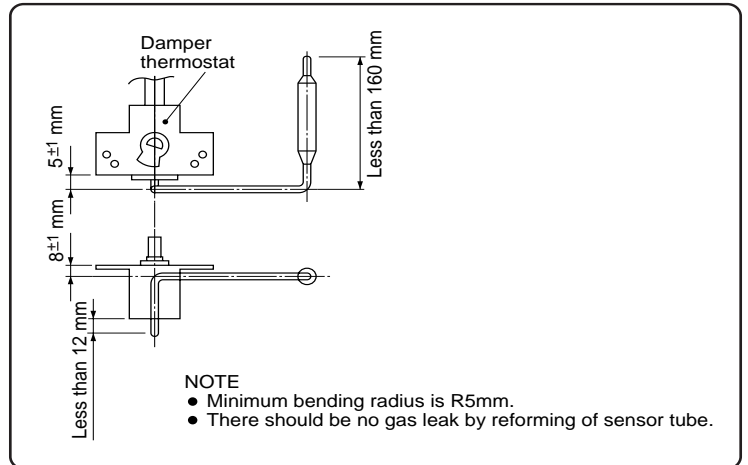


Figure A-1

(1) Forming sensor of Damper thermo.



After forming, fix it to the refrigerator.

Figure A-2

(2) Sticking sealers to R air guider.

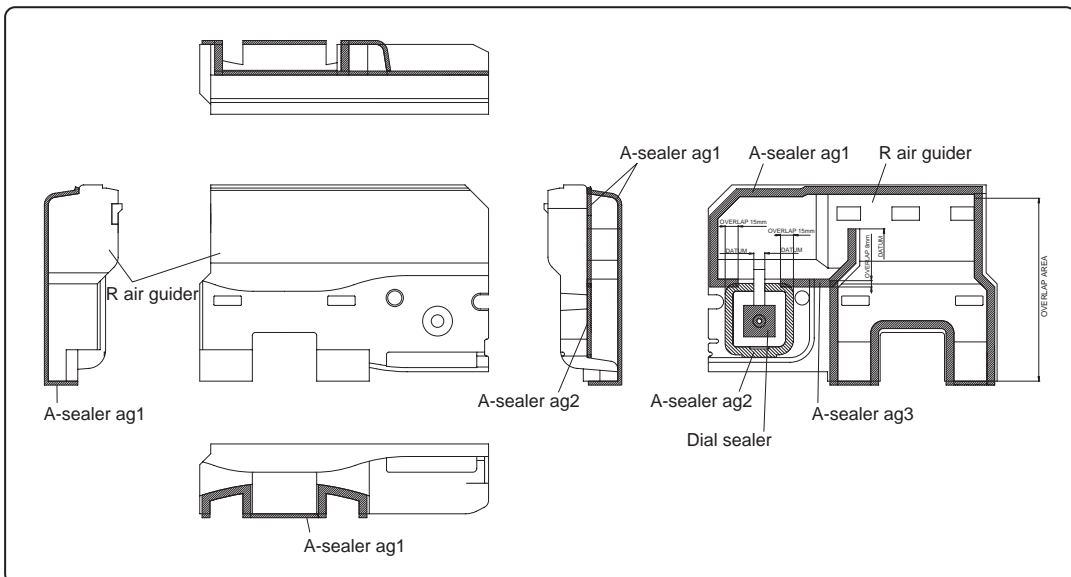
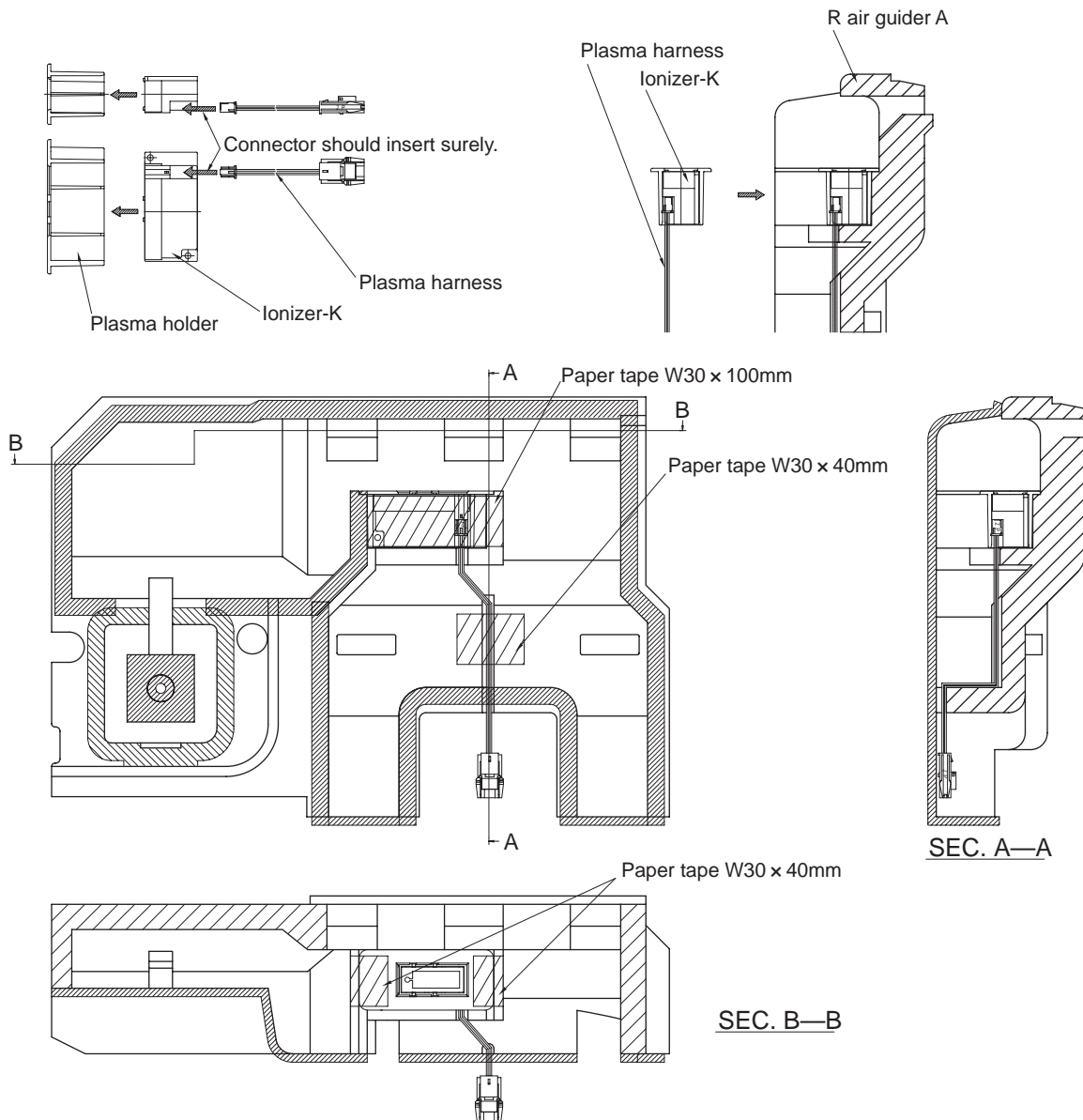


Figure A-3

(3) Fixing of the Ionizer-K.

- (3)-1 Connect Ionizer-K and connector of the lead wire.
- (3)-2 Insert Ionizer-K to Plasma holder.
- (3)-3 Insert the (3)-2 assembly to R air guider A.



2. FAN LOUVER AND E.V COVER ASSEMBLY

2-1. How to remove the Fan louver

- (1) Take out 2 screws.
- (2) Insert the screwdriver into the air hole of the Fan louver.
- (3) Press the Fan louver to the left side with the screwdriver, and pull it toward yourself to take off the Fan louver.

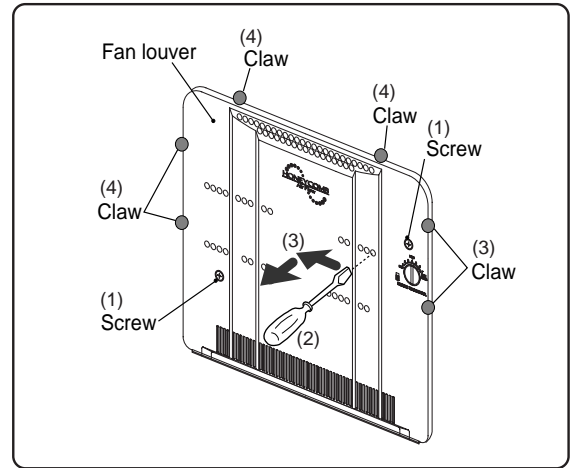


Figure A-4

2-2. E.v cover assembly

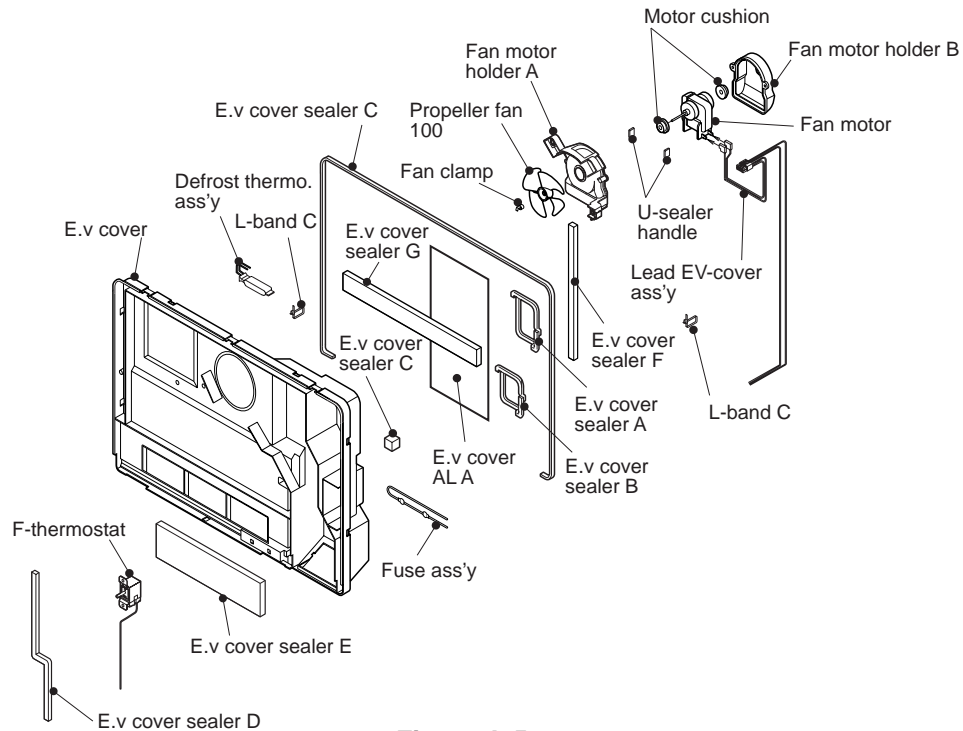


Figure A-5

(1) Sticking of Sealers to E.V cover

(2) Fixing of Fan motor and Fan

(2-1) Stick U-sealer handle to Fan motor holder A.

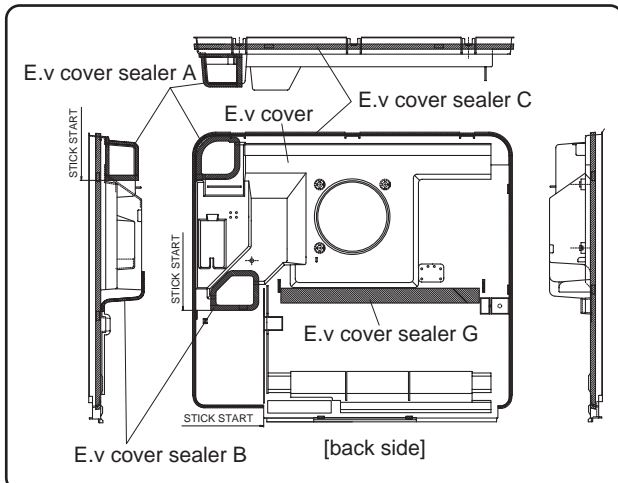


Figure A-6

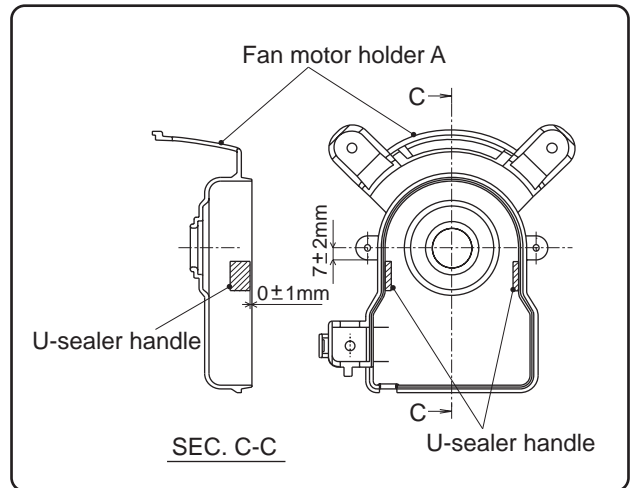


Figure A-7

- (2)-2 Insert the terminals of Lead EV-cover ass'y to Fan motor.
- (2)-3 Fix two Motor cushions to Fan motor, and set it at Fan motor holder A and B. Then fix with Tapping screw.

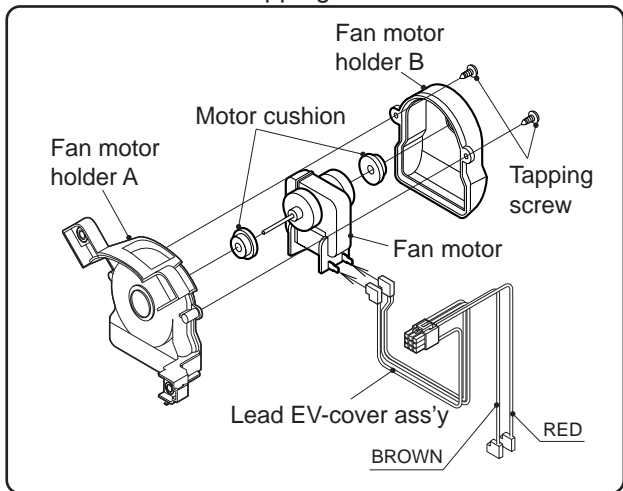


Figure A-8

- (2)-4 Set Fan clamp to Propeller fan 100 and insert it to the shaft of Fan motor.

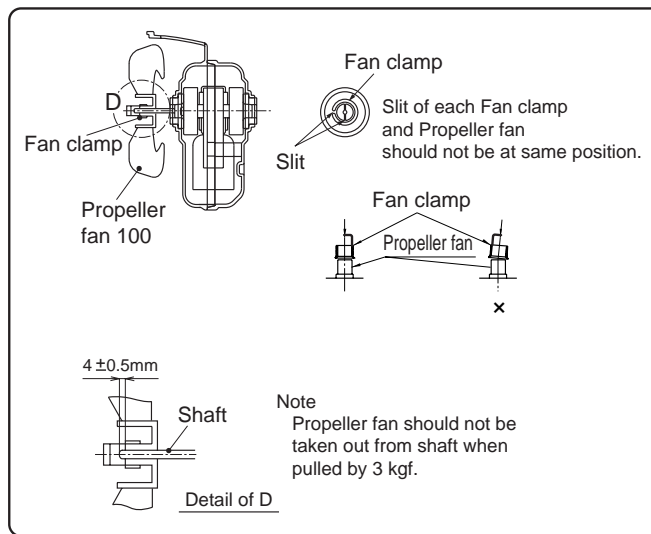


Figure A-9

- (3) Setting of Fan motor ass'y , Defrost thermo. ass'y and Fuse ass'y.

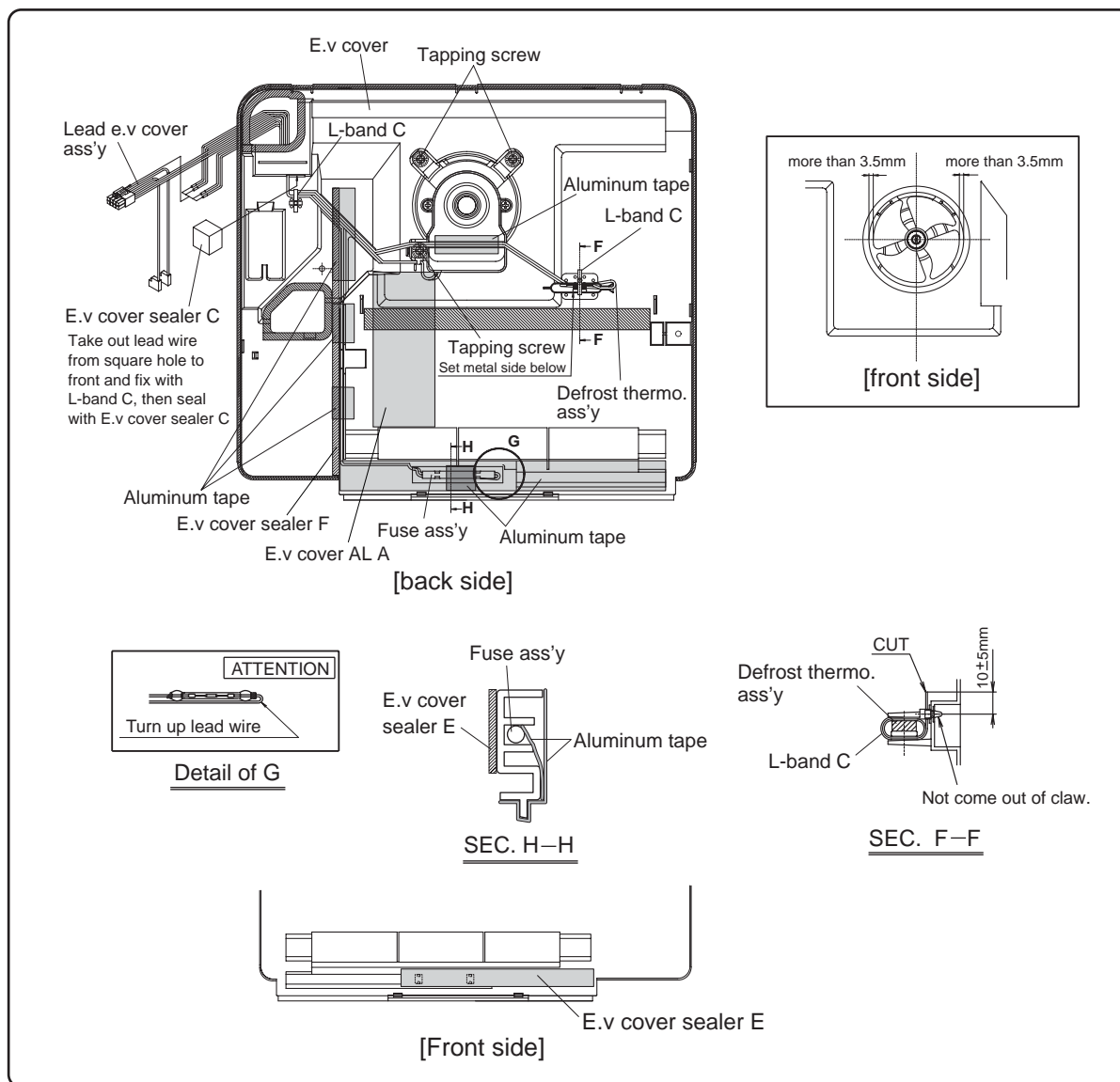


Figure A-10

(4) Inserting of pins

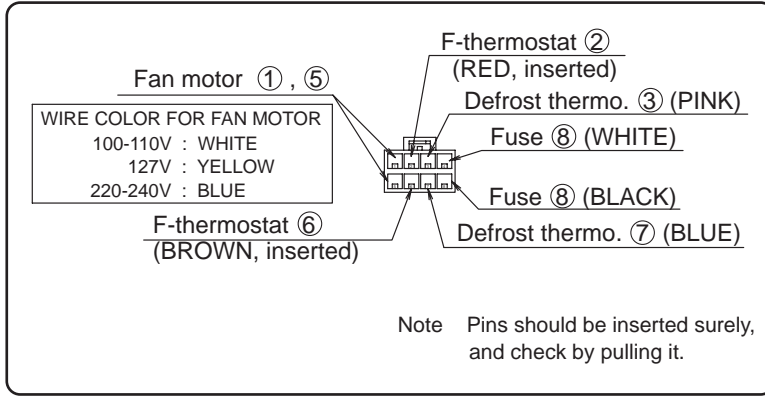


Figure A-11

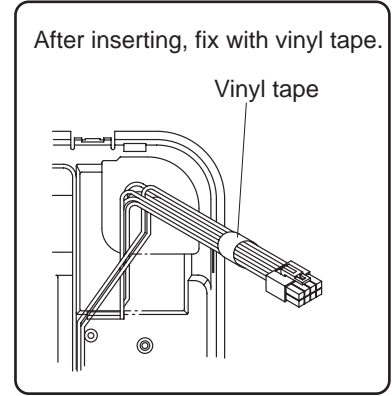


Figure A-12

(5) Setting of F-thermostat

(5)-1 Form capillary tube of F-thermostat.

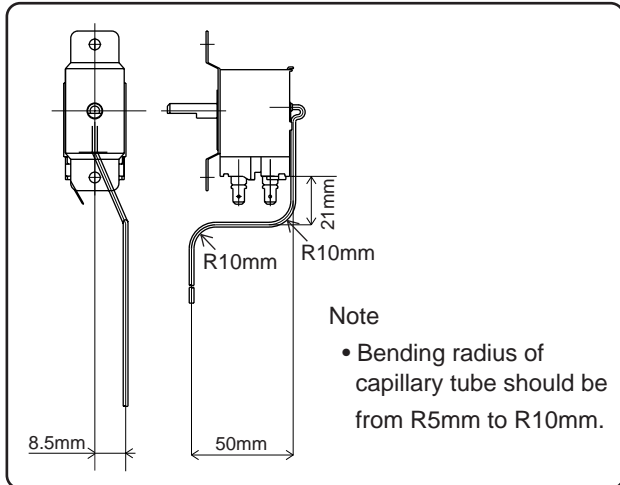


Figure A-13

(5)-3 Set to E.V cover.
Stick E.v cover sealer D.

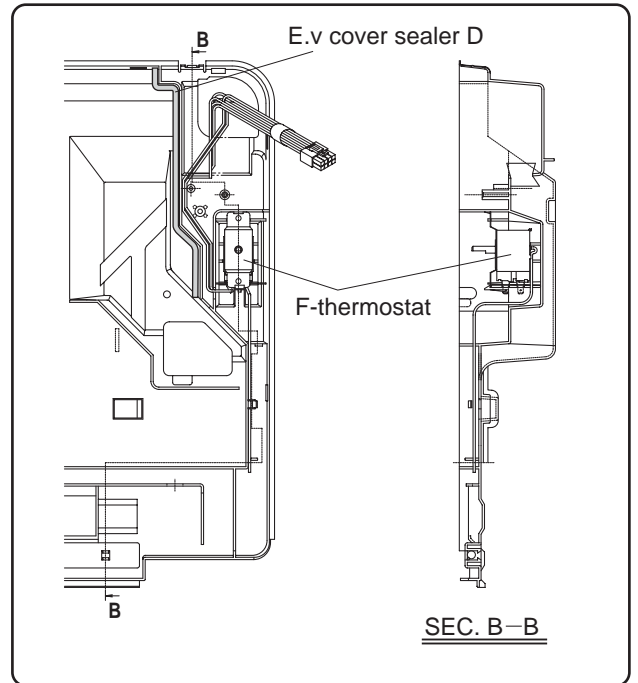


Figure A-15

(5)-2 Insert terminal of Lead EV-cover ass'y.

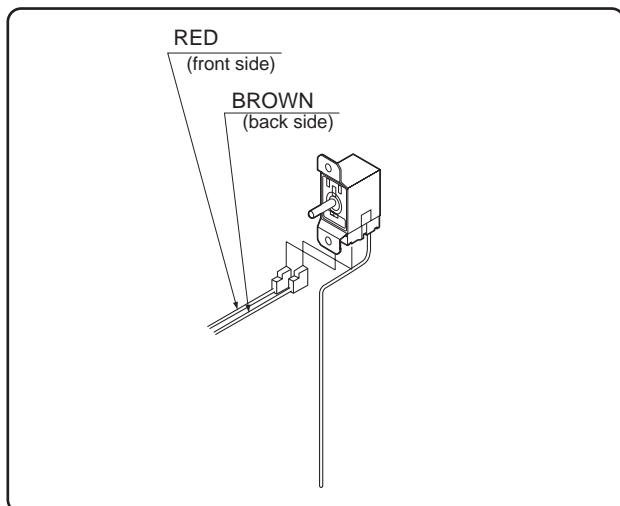


Figure A-14

3. DEFROST HEATER

(1) Taking-out Evaporator

(1)-1. Take out E.v cover ass'y (Fig. A-16).

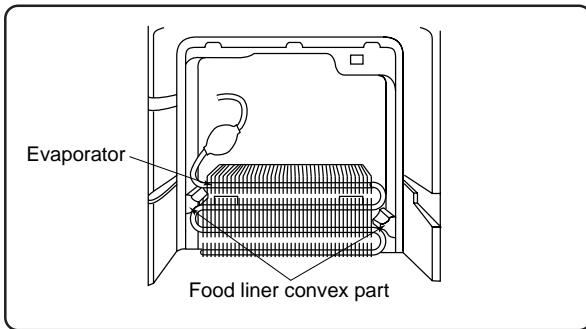


Fig. A-16

(1)-2. As shown in Fig. A-17, pull the upper part of Evaporator toward you, pull it diagonally so that the pipe of Evaporator does not contact the convex part of food liner.

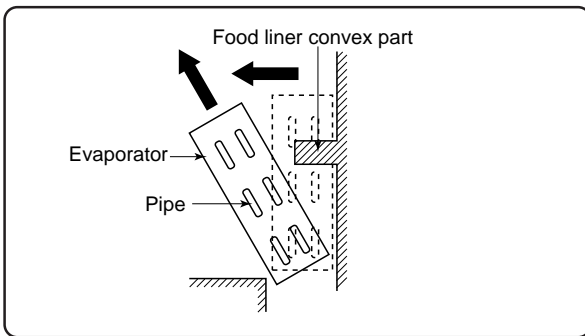


Fig. A-17

(1)-3. As shown in Fig. A-18, bend the removed Evaporator horizontally so that Defrost heater can be replaced easily.

NOTE: When pulling Evaporator and bending the pipes, pay attention so as not to break and deform the pipes. Still, take care not to hurt yourself by fin of Evaporator.

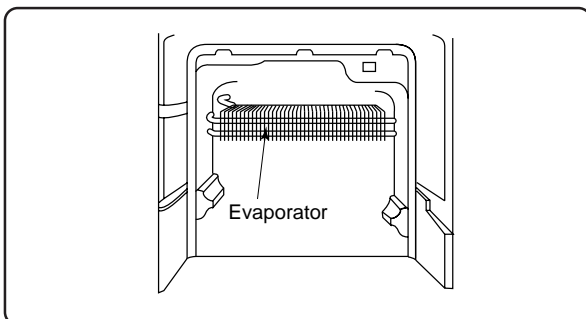


Fig. A-18

(2) Replacement of Def. heater ass'y.

(2)-1 Remove the center screw of Drain support al to take it off from the food liner.

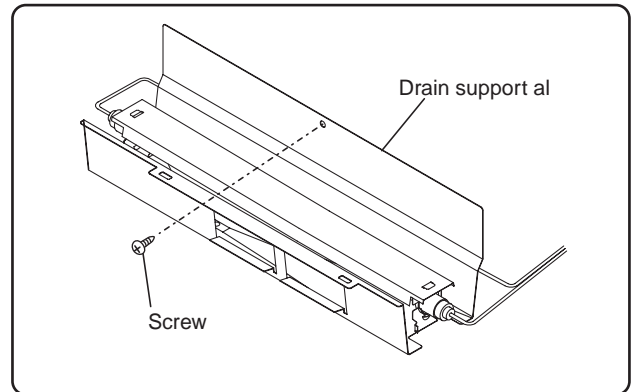


Fig. A-19

(2)-2 Raise the protrusion part of Drain support al. Then remove Heater cover.

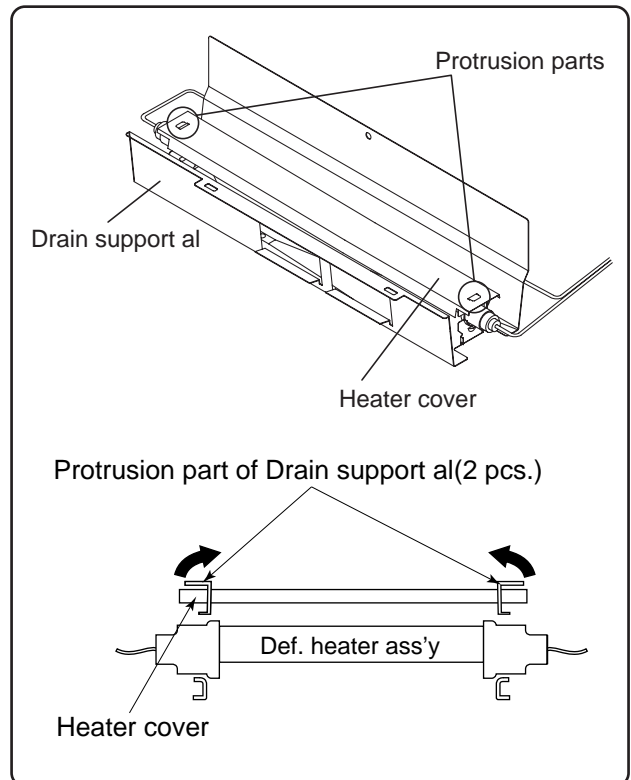


Fig. A-20

(2)-3 Open Def.heater fixed part of Drain support al to the right and left, then remove Def.heater ass'y.

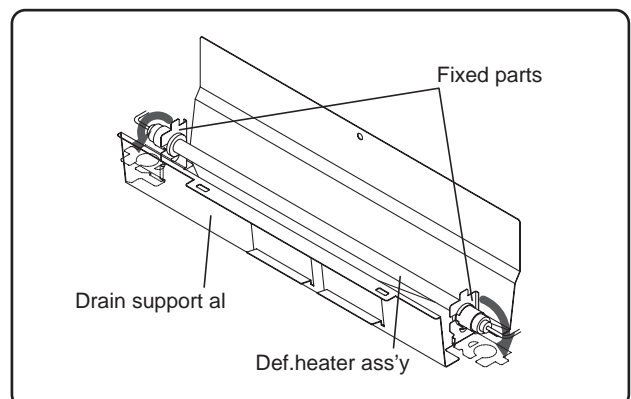


Fig. A-21

(2)-4. Replace Def. heater ass'y with new one.

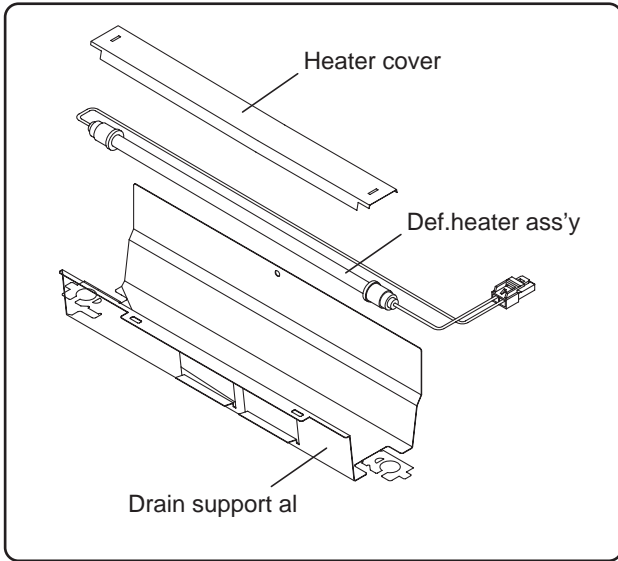


Fig. A-22

(2)-5. Wind the Glass cloth tape (3M: No. 27) to lead wire of Def. heater ass'y. (2 places)

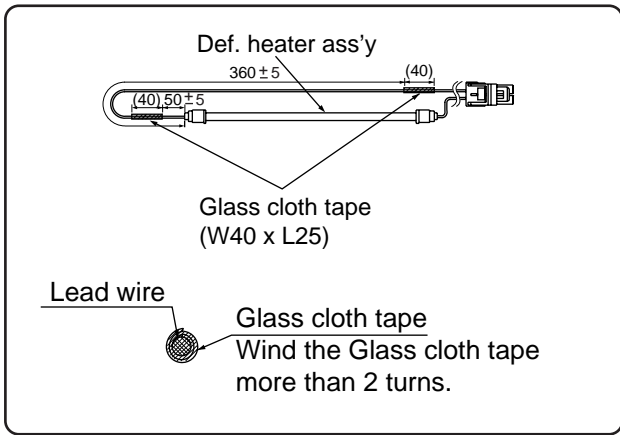


Fig. A-23

(2)-6. Bend (a) and (b) of Drain support al to right angle (90°) to set Def. heater ass'y. (Fig. A-24)

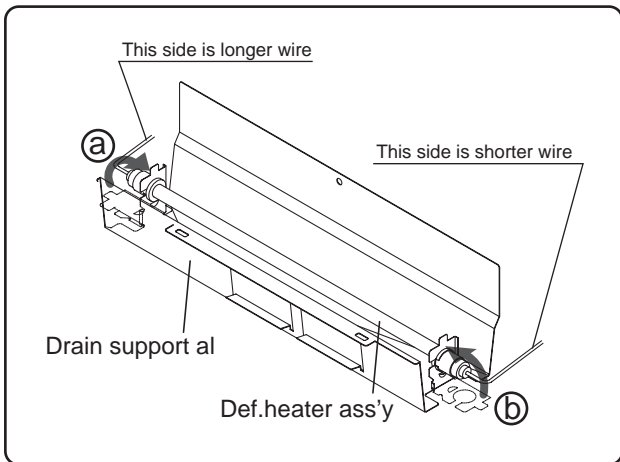


Fig. A-24

(2)-7. Stick the longer wire to the Drain support by aluminum tape (2 pieces), and wind vinyl tape (2 pieces) to lead wires of Def. heater ass'y by aluminum tape as shown in Fig. A-25.

Note: Glass cloth tape part shall be both side of Drain support to protect the lead wire from damaged.

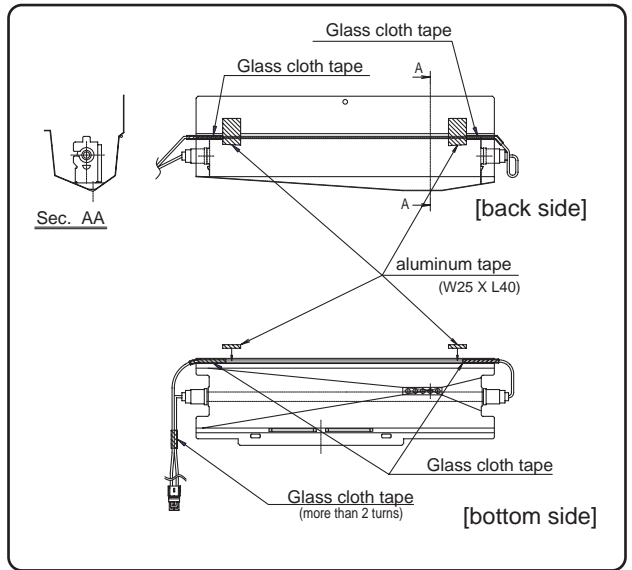


Fig. A-25

(2)-8. Set Heater cover on Drain support, and bend top edge (c) and (d) to outside as shown in Fig. A-26.

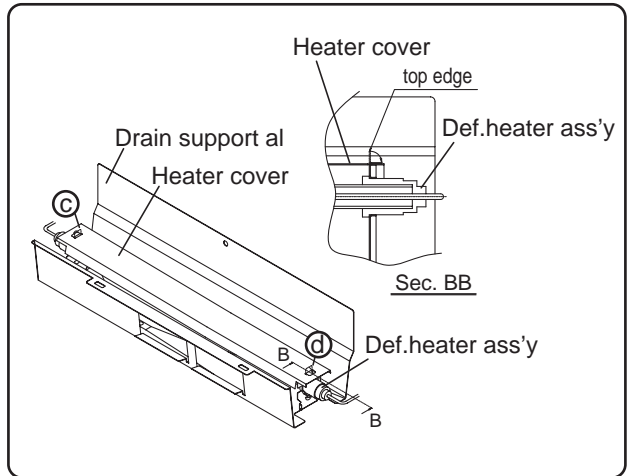


Fig. A-26

(2)-9. Wind up Leading wire sealer as shown in Fig. A-27

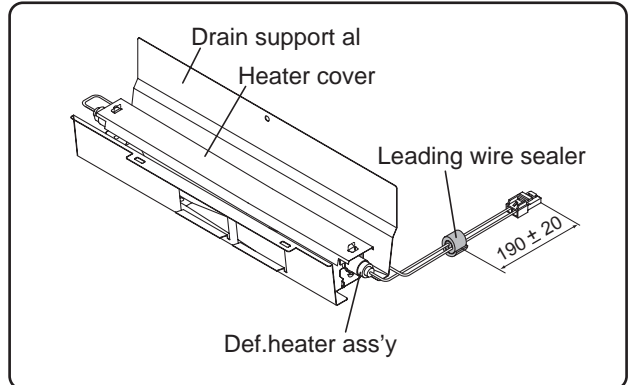


Fig. A-27

(2)-10. Set the assembly above on the food liner by fixing a screw.

(3) Installing of Evaporator

- (3)-1. Install Evaporator as shown in Fig. A-16 in the reverse order of Fig. A-17.
- (3)-2. Correct the deformed fin.

NOTE

- 1. When installing Evaporator, take care not to deform significantly and break the pipes.
- 2. Take care not to damage the lead wires and hurt yourself by the fin of Evaporator.

COOLING UNIT

- Mark: Refrigerant flow
- × Mark: Brazing portion

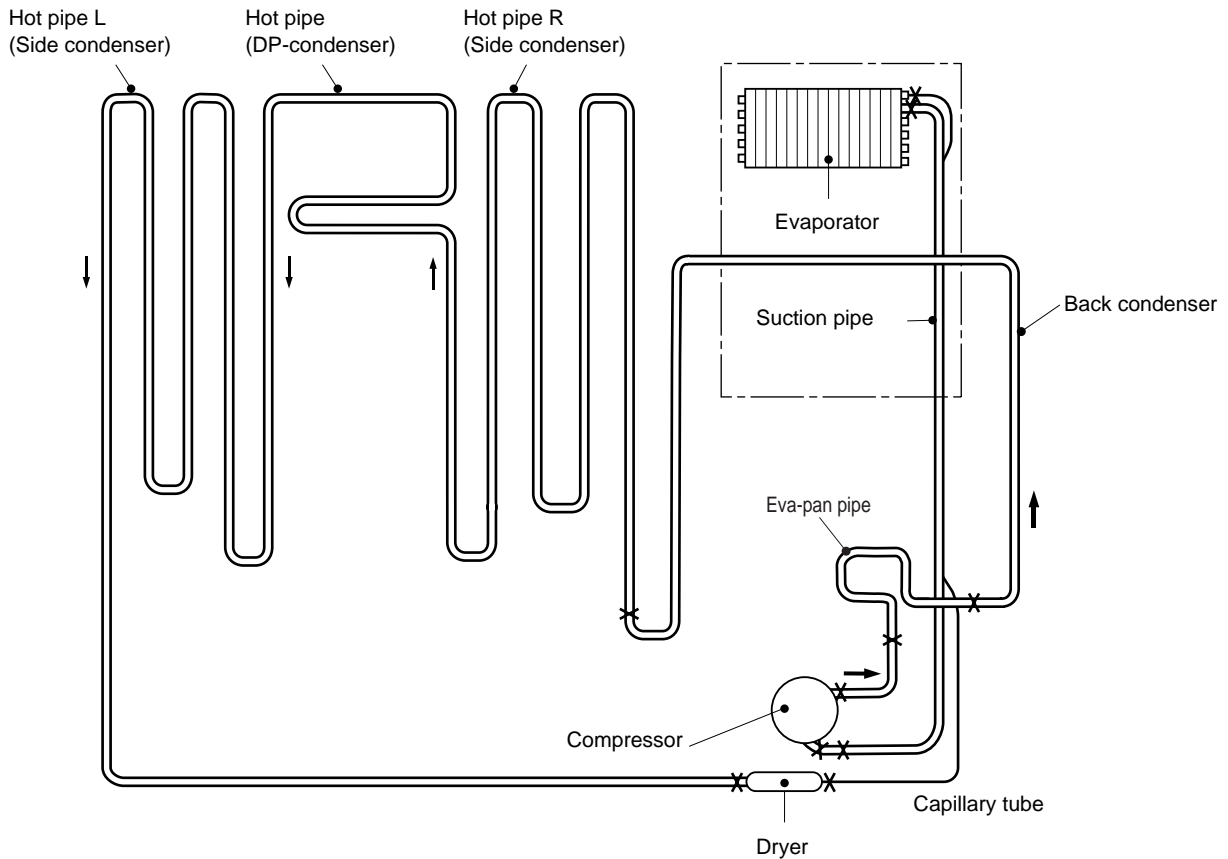


Figure C-1. Cooling unit

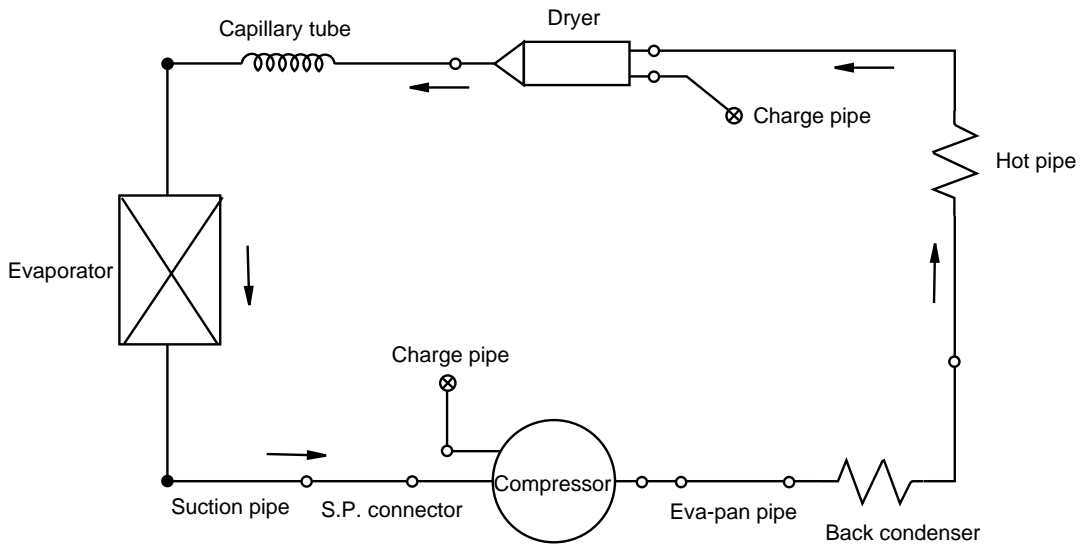


Figure C-2. Location

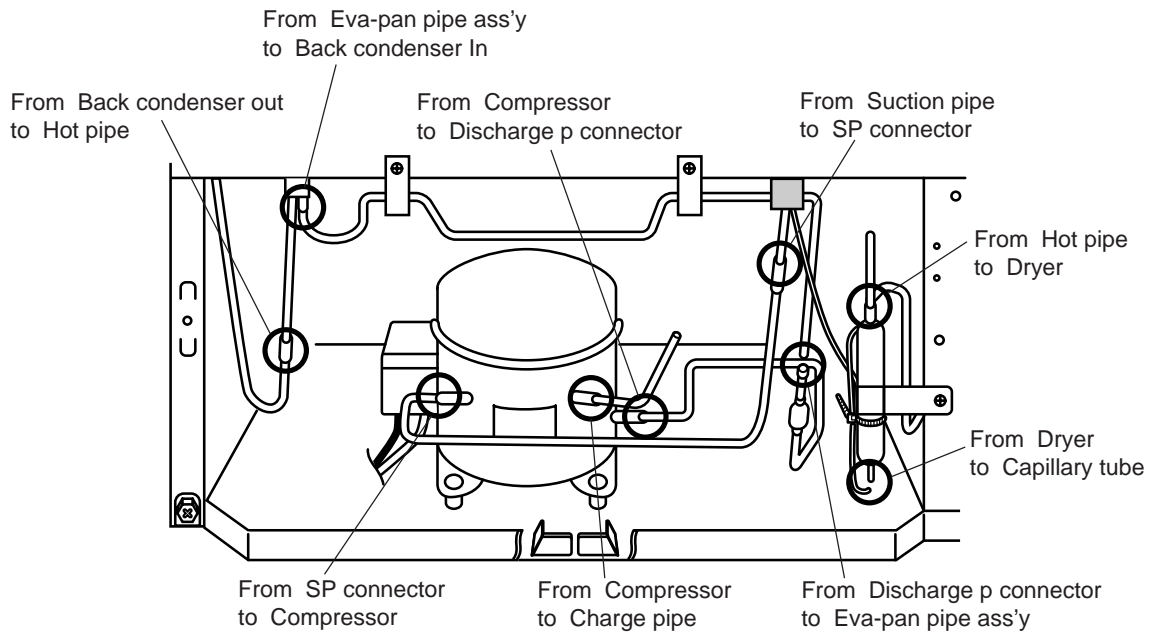


Figure C-3. Location

REPLACEMENT PARTS LIST (SJ-P40M/P45M-PLM)

REF. NO.	PART NO.	DESCRIPTION	Q'TY		CODE
			SJ-P40M -PLM	SJ-P45M -PLM	

ELECTRIC PARTS

1- 1	RTHM-A104CBZZ	F-themostat	1	1	BB
1- 2	RSTT-A134CBE0	Starting relay	1	1	AS
1- 3	QSWTDA043CBE0	Defrost timer	1	1	BB
1- 4	PDMP-A051CBEZ	Damper thermo	1	1	AX
1- 5	FTHM-A039CBKZ	Defrost thermo.ass'y	1	1	AM
1- 6	RMOTRA046CBE0	Fan motor	1	1	AZ
1- 7	QSOCAA084CBEZ	Lamp socket	1	1	AL
1- 8	RLMP-A029CBEZ	Lamp15w	1	1	AH
1- 9	QACC-A132CBE0	Source cord	1	1	AN
1- 10	QSW-PA090CBZA	Door switch	1	1	AS
1- 11	RHOG-A161CBZZ	Protector	1	1	AX
1- 17	FFS-TA061CBKZ	Fuse ass'y	1	1	AM
1- 20	FW-VZA146CBEZ	Lead ev-cover ass'y	1	1	AL
1- 21	FHETBA162CBEZ	Def.heater ass'y	1	1	AY
1- 22	FCNW-A759CBKZ	Relay cord s ass'y	1	1	AK
1- 33	QCNW-A812CBE0	Olr cord	1	1	AF
1- 45	FTRN-A014CBKZ	Ionaizer-k	1	1	AZ
1- 46	QCNW-B104CBZZ	Plasma harness	1	1	AF
1- 50	FPWB-A337CBKZ	Main pwb	1	1	BC
1- 55	FPWB-A336CBKZ	Panel pwb ass'y	1	1	AT

MECHANICAL PARTS

2- 2	JKNB-A036CBFC	F-temp. control knob	1	1	AC
2- 4	LANG-A059CBPZ	Eva holder 47	2	2	AC
2- 7	FLEGPA083CBKZ	Leg holder l ass'y	1	1	AF
2- 7- 1	FAJS-A015CBKZ	Adjustable leg ass'y	2	2	AE
2- 7- 2	LHLD-A533CBPZ	Leg holder l	1	1	AL
2- 8	FLEGPA084CBKZ	Leg holder r ass'y	1	1	AF
2- 8- 2	LHLD-A534CBPZ	Leg holder r	1	1	AP
2- 13	DHNG-A437CBMZ	Upper hinge ass'y	1	1	AE
2- 14	DHNG-A419CBMZ	Bottom hinge r ass'y	1	1	AD
2- 15	DHNG-A418CBMZ	Center hinge r ass'y	1	1	AE
2- 16	GCOV-A210CBFZ	E.v cover	1	1	AR
2- 17	LCRA-A022CBPZ	Fan clamp	1	1	AC
2- 19	LHLD-A389CBF0	Motor cushion	2	2	AF
2- 20	NFANPA011CBF0	Propeller fan 100	1	1	AD
2- 21	PSEL-C067CBEZ	E.v cover sealer a	1	1	AA
2- 22	PSEL-C068CBEZ	E.v cover sealer b	1	1	AA
2- 23	PSEL-C066CBEZ	E.v cover sealer c	1	1	AC
2- 24	PCOVPA308CBFA	Terminal cover	1	1	AE
2- 26	PCOV-A277CBFA	R lamp cover	1	1	AE
2- 27	GCOVPA142CBRA	R-c box cover	1	1	AQ
2- 28	HGRL-A206CBRA	Fan louver	1	1	AS
2- 29	GCOV-A228CBFH	Upper hinge cover	1	1	AE
2- 31	JKNB-A033CBFC	R-temp.control knob	1	1	AC
2- 38	PGID-A168CBFZ	R-air guider	1	1	AK
2- 43	LPLTPA323CBMA	Panel base	1	1	AN
2- 44	HGRL-A237CBFA	F deodo.louwer	1	1	AE
2- 45	HGRL-A238CBFA	R deodo.louwer	1	1	AC
2- 46	PFIL-A050CBEZ	Deodorizer	2	2	AM
2- 47	LHLD-A672CBFZ	Plasma holder	1	1	AE
2- 49	LSTPPA108CBFA	Chilled stopper	2	2	AC
2- 50	LSTPPA118CBFA	Case stopper v	2	2	AC
2- 55	HGRL-A205CBFA	Multi louver l	-	1	AM
2- 55	HGRL-A209CBFA	Multi louver s	1	-	AM
2- 56	PFPFPB334CBFZ	R-louver insu.l	-	1	AE
2- 56	PFPFPB345CBFZ	R-louver insu.s	1	-	AE
2- 57	PSEL-C085CBEZ	A-sealer r-louwer	-	2	AC
2- 57	PSEL-C095CBEZ	A-sealer r-louwer	2	-	AB
2- 63	LHLD-A484CBFA	Fan motor holder b	1	1	AH
2- 64	LHLD-A485CBFA	Fan motor holder a	1	1	AH
2- 65	PSEL-B209CBE0	U-sealer handle	2	2	AB
2- 66	PSHEMA225CBPZ	Heater cover	1	1	AC
2- 67	LPLTMA633CBPZ	Drain support al	1	1	AF
2- 68	PSEL-A415CBE0	E.v cover sealer c	1	1	AC
2- 69	PSEL-C069CBEZ	E.v cover sealer d	1	1	AA
2- 70	PSEL-C135CBEZ	E.v cover sealer e	1	1	AC
2- 71	PSEL-A552CBE0	Dial sealer	1	1	AC
2- 72	PSEL-C078CBEZ	A-sealer ag1	2	2	AC
2- 73	PSEL-C079CBEZ	A-sealer ag2	1	1	AB
2- 77	LHLD-A359CBFA	T-box holder	1	1	AE
2- 78	LPLTMA399CBP0	Dryer support	1	1	AD

REF. NO.	PART NO.	DESCRIPTION	Q'TY		CODE
			SJ-P40M -PLM	SJ-P45M -PLM	
2- 79	LBND-A019CBE0	Nylon band	1	1	AB
2- 80	PBOX-A132CBFA	Terminal box	1	1	AF
2- 81	PBOX-A143CBFA	Terminal box-b	1	1	AH
2- 82	PCOVPA373CBFA	Terminal cover-b	1	1	AN
2- 83	PSEL-C080CBEZ	A-sealer ag3	1	1	AA
2- 87	LBND-A018CBE0	Fastening band a	1	1	AP
2- 91	HGRL-A202CBFA	F return cover	1	1	AF
2- 93	PCAP-A068CBFA	C sliding cap a	4	4	AC
2- 94	PSEL-C137CBEZ	E.v cover sealer f	1	1	AB
2- 95	PSHEMA231CBEZ	Ev cover al a	1	1	AC
2- 98	LHLD-A504CBE0	Sl-3n clip	1	1	AD
2- 99	PSEL-A562CBE0	Leading wire sealer	1	1	AC
2- 100	PSEL-C138CBEZ	E.v cover sealer g	1	1	AA
2- 101	PSEL-C139CBEZ	Ev-insulation 47	2	2	AC

DOOR PARTS

3- 5	FDORFB832CBKZ	F-door ass'y	1	1	BS
3- 5- 1	LSTPPA131CBFA	Fd-stopper spring r	1	1	AD
3- 5- 3	LSTPMA008CBM0	F-door stopper r	1	1	AD
3- 6	FPACGA346CBKZ	F-door packing	1	1	AT
3- 7	HDECQA475CBMA	Hd cap	2	2	AH
3- 8	HDECQA476CBRA	Handle trim f	1	1	AN
3- 9	LPLTMA686CBPZ	Hd support f	1	1	AD
3- 10	LPLTPA374CBFA	Handle base f	1	1	AH
3- 11	HDECQA478CBMA	Hd cover ft	1	1	AM
3- 15	FDORRB639CBKZ	R-door ass'y	-	1	BW
3- 15	FDORRB640CBKZ	R-door ass'y	1	-	BU
3- 15- 1	LSTPPA084CBFA	Rd-stopper spring r	1	1	AD
3- 15- 2	NBRGPA022CBFA	Nylon bearing 3s	1	1	AC
3- 15- 3	LSTP-A058CBM0	R-door stopper r	1	1	AF
3- 17	FPACGA347CBKZ	R-door packing	-	1	AV
3- 17	FPACGA348CBKZ	R-door packing	1	-	AV
3- 19	HDECQA477CBRA	Handle trim r	1	1	AN
3- 20	HDECQA479CBMA	Hd cover rb	1	1	AP
3- 21	LPLTMA687CBPZ	Hd support r	1	1	AD
3- 22	LPLTPA375CBFA	Handle base r	1	1	AK
3- 30	GCOVPA177CBRA	Panel cover	1	1	BA
3- 31	HBDG-A005CBEA	Pc badge	1	1	AH

OTHER PARTS

4- 1	LBND-A023CBE0	L-band c	4	4	AC
4- 3	LX-VZA022CBZZ	Special screw	8	8	AC
4- 12	QTAN-A013CBE0	Solderless term. a	8	8	AH
4- 15	LX-BZA090CBZZ	Special screw	1	1	AC
4- 17	LX-WZA035CBZZ	Washer	4	4	AB

ATTACHMENT PARTS

5- 1	UPOK-A180CBRA	Bottle pocket	1	1	AR
5- 2	UPOKPA268CBFA	R door pocket s	2	2	AH
5- 3	UPOK-A179CBRA	Door pocket	3	3	AM
5- 4	UPOK-A181CBRA	R door pocket	1	1	AL
5- 5	UTNA-A282CBFA	Egg tray	1	1	AH
5- 6	FSRA-A193CBYZ	Ice cube maker	1	1	AS
5- 9	USRA-A270CBFA	Freezer tray	1	1	AT
5- 13	HGRL-A239CBFA	Ventilating grille	1	1	AN
5- 14	USRA-A268CBFA	Evaporating pan	1	1	AM
5- 15	GGAD-A032CBFA	V parting plate	1	1	AG
5- 16	UYOK-A401CBFA	Vegetable case	1	1	AX
5- 17	UYOK-A399CBFA	Ice storage box	1	1	AL
5- 18	UYOK-A400CBFA	Fresh case	1	1	AV
5- 19	GDORPA072CBRA	Fresh door hs	1	1	AN
5- 24	FTNA-A394CBKZ	R glass shelf ass'y	2	2	AR
5- 24- 1	UTNA-A377CBEZ	Glass shelf r	2	2	AU
5- 24- 2	UWAKPA014CBFA	G guard r	2	2	AS
5- 25	FTNA-A395CBKZ	V glass shelf ass'y	1	1	AR
5- 25- 1	UTNA-A378CBEZ	Glass shelf v	1	1	AW
5- 25- 2	UWAKPA015CBFA	G guard v	1	1	AS
5- 31	LRALPA136CBFA	Ice tray holder l	1	1	AG
5- 32	LRALPA137CBFA	Ice tray holder r	1	1	AG
5- 35	UPOKPA269CBFA	Bottle stopper	1	1	AC

REF. NO.	PART NO.	DESCRIPTION	Q'TY		CODE
			SJ-P40M -PLM	SJ-P45M -PLM	

CYCLE PARTS

6- 1	PCMPLA216CBEZ	Compressor	1	1	BW
6- 2	PSPAGA042CBE0	Rubber grommet	4	4	AE
6- 4	FFRM-A119CBKZ	Base frame ass'y	1	1	AH
6- 5	FDRY-A006CBK0	Dryer ass'y	1	1	AX
6- 6	PCLI-A044CBE0	Clip	1	1	AD
6- 9	PSPAFA034CBE0	Sleeve	4	4	AD
6- 11	PPIPCA386CBEZ	S.p connector	1	1	AF
6- 18	PPIPCA252CBE0	Charge pipe	2	2	AD
6- 19	FPIPCA172CBKZ	Discharge p. ass'y	1	1	AM
6- 21	PCOVPA208CBE0	Terminal cover	1	1	AK
6- 24	PGUM-A004CBF0	Absorbent rubber a	2	2	AH
6- 26	FPIPCA162CBKZ	Eva pan pipe s ass'y	1	1	AS
6- 28	LANG-A058CBPZ	Absorbent rubber clm	2	2	AC
6- 29	PGUM-A003CBF0	Absorbent rubber b	2	2	AH

MISCELLANEOUS

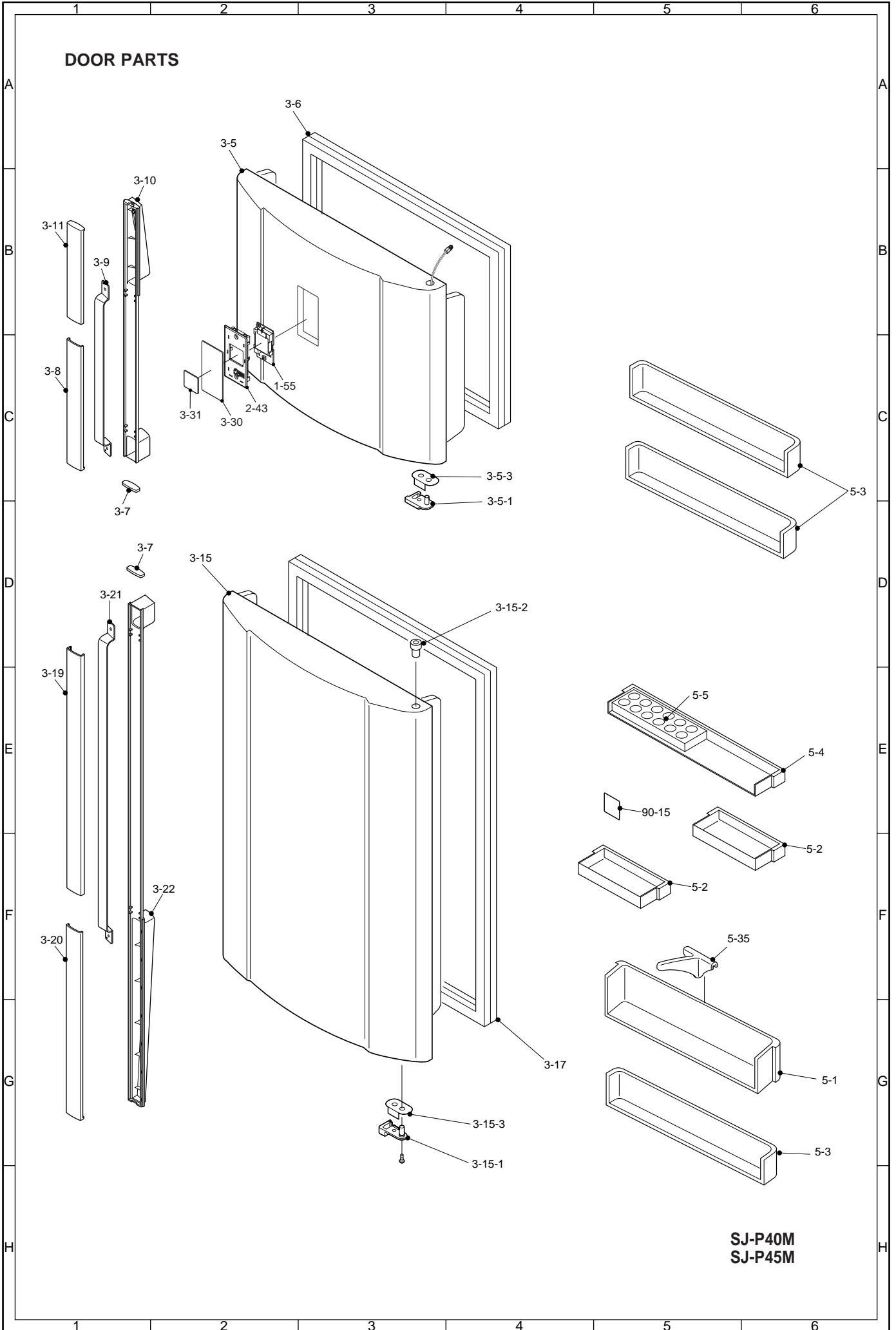
90- 1	TINS-A673CBRZ	Operation manual	1	1	AF
90- 2	TLAB-A876CBRZ	Warning label	1	1	AC
90- 3	SPAKCA166CBZZ	Packing case 47n	-	1	BA
90- 3	SPAKCA167CBZZ	Packing case 43n	1	-	AZ
90- 6	CPADBA799YDKZ	Bottom pad ass'y	1	1	AV
90- 7	CPADBA057CBKZ	Top pad ass'y	1	1	AR
90- 8	SPADBA190CBFZ	Corner post fl	1	1	AK
90- 9	SPADBA191CBFZ	Corner post fr	1	1	AL
90- 10	SPADBC435YDEZ	Corner post bl	1	1	AG
90- 11	SPADBC436YDEZ	Corner post br	1	1	AG
90- 15	TLAB-B055CBEZ	R-door pocket label	-	1	AC
90- 21	TLAB-A939CBRZ	Caution label rof	1	1	AD
90- 22	TCAD-A002CBR0	New life card	1	1	AF
90- 23	TLAB-A849CBR0	Green label	1	1	AH
90- 24	TSPCNB017CBRZ	Name plate t	-	1	AC
90- 24	TSPCNB018CBRZ	Name plate t	1	-	AC

HOW TO ORDER REPLACEMENT PARTS

To have your order filled promptly and correctly, please furnish the following information.

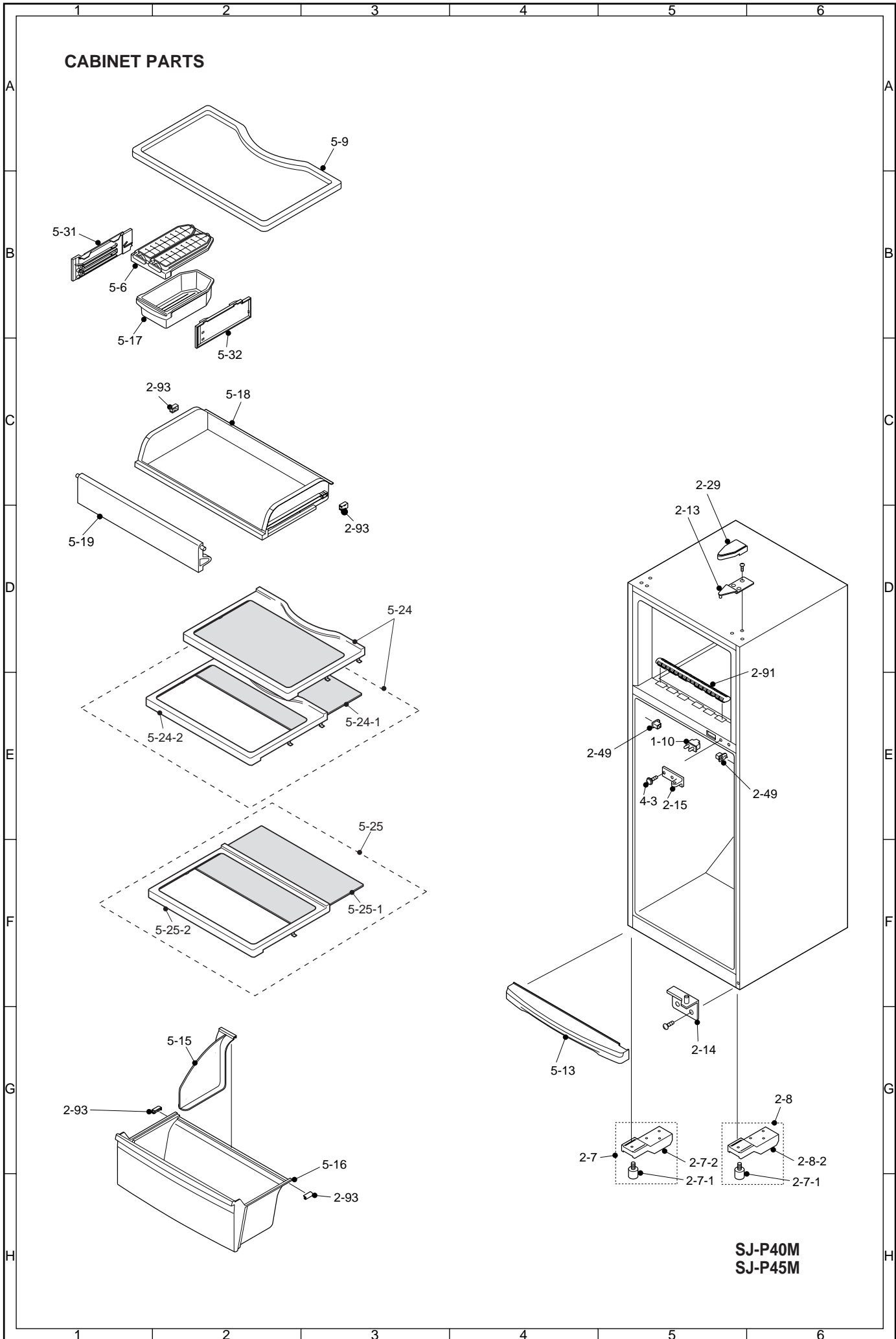
- | | |
|-----------------|----------------|
| 1. MODEL NUMBER | 2. REF. NO. |
| 3. PART NO. | 4. DESCRIPTION |

DOOR PARTS



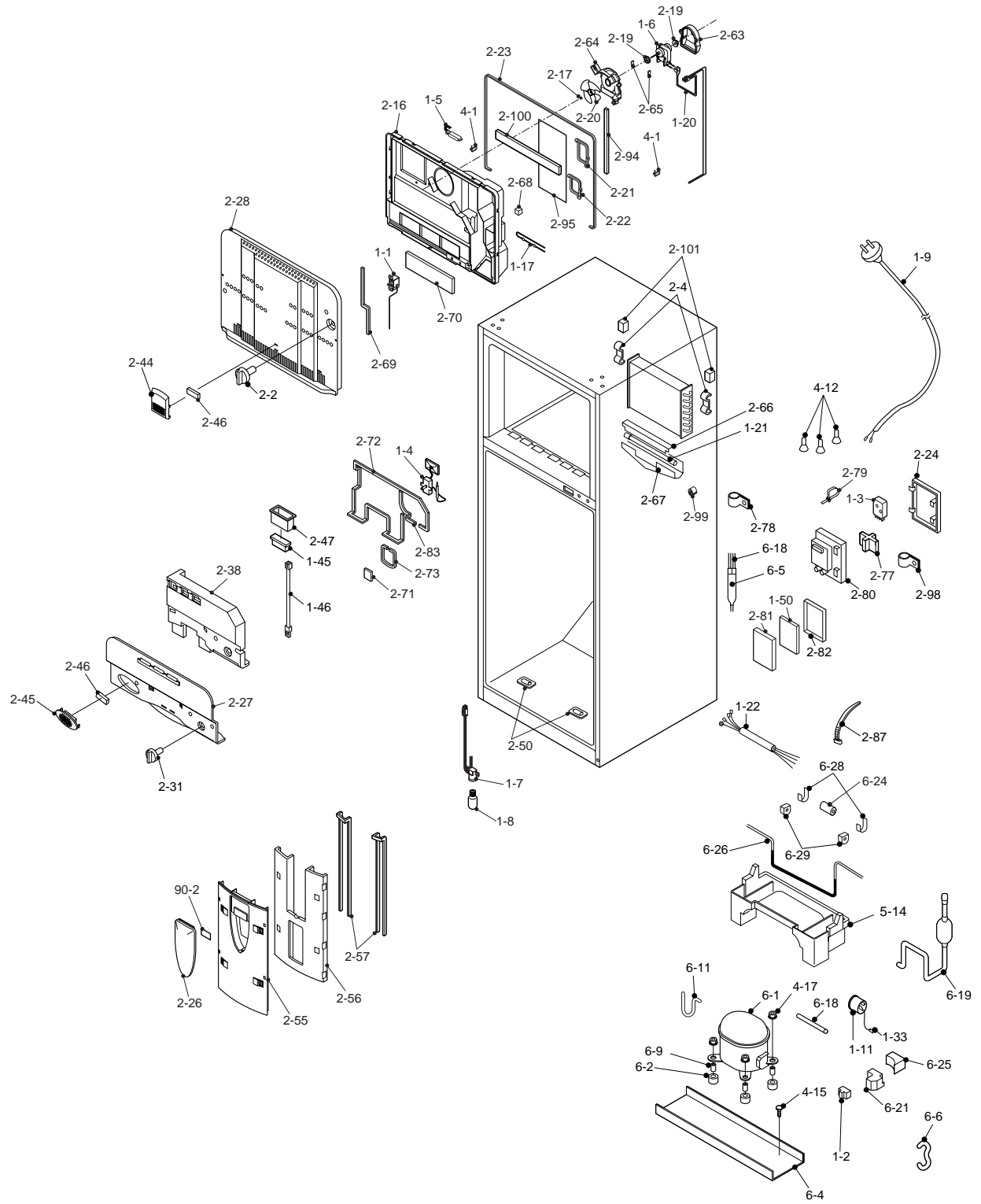
SJ-P40M
SJ-P45M

CABINET PARTS



SJ-P40M
SJ-P45M

CABINET PARTS



SJ-P40M
SJ-P45M

SHARP

COPYRIGHT © 2005 BY SHARP CORPORATION

ALL RIGHTS RESERVED.

No part of this publication may be reproduced, stored in retrieval systems, or transmitted in any form or by any means, electronic, mechanical, photocopying, recording, or otherwise, without prior written permission of the publisher.