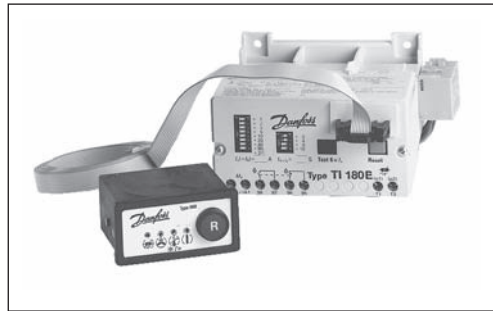


**Description**



**TI 180 E and TI 630**

Electronic motor protection relays TI 180 E and TI 630E give effective protection of electric motors exposed to thermal overload, phase failure and asymmetrical load. They therefore fulfil the requirements of IEC 947-4 and IEC 255-8. TI 180 E/630 E are compact units with built-in current transformers for the measurement of motor operating current.

**Features**

- Trip range 20-180 A, that can be reduced by loop to 2.5-5 A or less.
- Trip range from 160-630 A
- Galvanically isolated signal contact.
- Light emitting diodes for operating and protection functions.
- Connection for thermistor over temperature protection.
- TI 180 E can be mounted on backplate, 35 mm symmetrical DIN rail or direct on contactors CI 110-180 via bus bars.
- Test and reset functions

**Ordering**



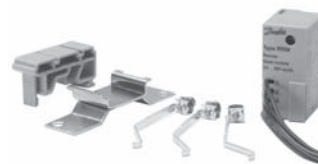
Current rail set for CI 110-180



Front cover for TI 180 E



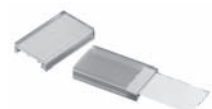
**RRM**  
Remote reset module for TI 180 E



**RRM**  
Remote reset module for TI 630 E



**IMR**  
Indication module for TI 180 E, 630 E



Marking plate for TI 630 E

*Electronic motor protection relay TI 180 E and TI 630 E*

Control voltage U <sub>s</sub>	Range D.O.L.	Manual reset <b>Code no.</b>	Type
24 V, 50/60 Hz	20-180 A	<b>047H3013</b>	TI 180 E
110 V, 50/60 Hz		<b>047H3014</b>	
220-230 V, 50/60 Hz		<b>047H3015</b>	
240 V, 50/60 Hz		<b>047H3016</b>	
380-400 V, 50/60 Hz		<b>047H3017</b>	
415 V, 50/60 Hz		<b>047H3018</b>	
24 V, 50/60 Hz	160-630 A	<b>047H3031</b>	TI 630 E
110 V, 50/60 Hz		<b>047H3032</b>	
220-230 V, 50/60 Hz		<b>047H3033</b>	
240 V, 50/60 Hz		<b>047H3034</b>	
380-400 V, 50/60 Hz		<b>047H3035</b>	
415 V, 50/60 Hz		<b>047H3036</b>	

With Y/D start, the motor full load current must be multiplied by 0.58

*Accessories for motor protection relays TI 180 E-630 E*

Description	Comments	<b>Code no.</b>
Current rail set	For direct mounting of motor protection relay TI 180 E on contactors CI 110 (set of 3)	<b>047H3027</b>
	For direct mounting of motor protection relay TI 180 E on contactors CI 141-180 (set of 3)	<b>047H3028</b>
Cover	Front cover for motor protection relay TI 180 E (prevents tampering with settings on front)	<b>047H3025</b>
	Finger protection of main terminals on TI 180 E and CI 110 (set of 2)	<b>037H3246</b>
	Finger protection of main terminals on TI 180 E and CI 141-180 (set of 2)	<b>037H3409</b>
	Finger protection of main terminals on TI 630 E and CI 210 EI-420 EI (set of 2)	<b>037H3406</b>
Indication module type IMR for TI 180 E, 630 E	Indication and reset module for panel mounting (IP 54 from front). Inclusive 3 m connection cable, plugs and mounting fixture.	<b>047H3023</b>
Remote reset module type RRM	For TI 180 E and TI 630 E	<b>047H3024</b>
DIN rail socket for RRM		<b>037H3154</b>
Mounting plate for RRM	Used with TI 630 E and RM	<b>047H3120</b>
Marking plate	Marking plate with covers for TI 630 E (100 off)	<b>037H3142</b>