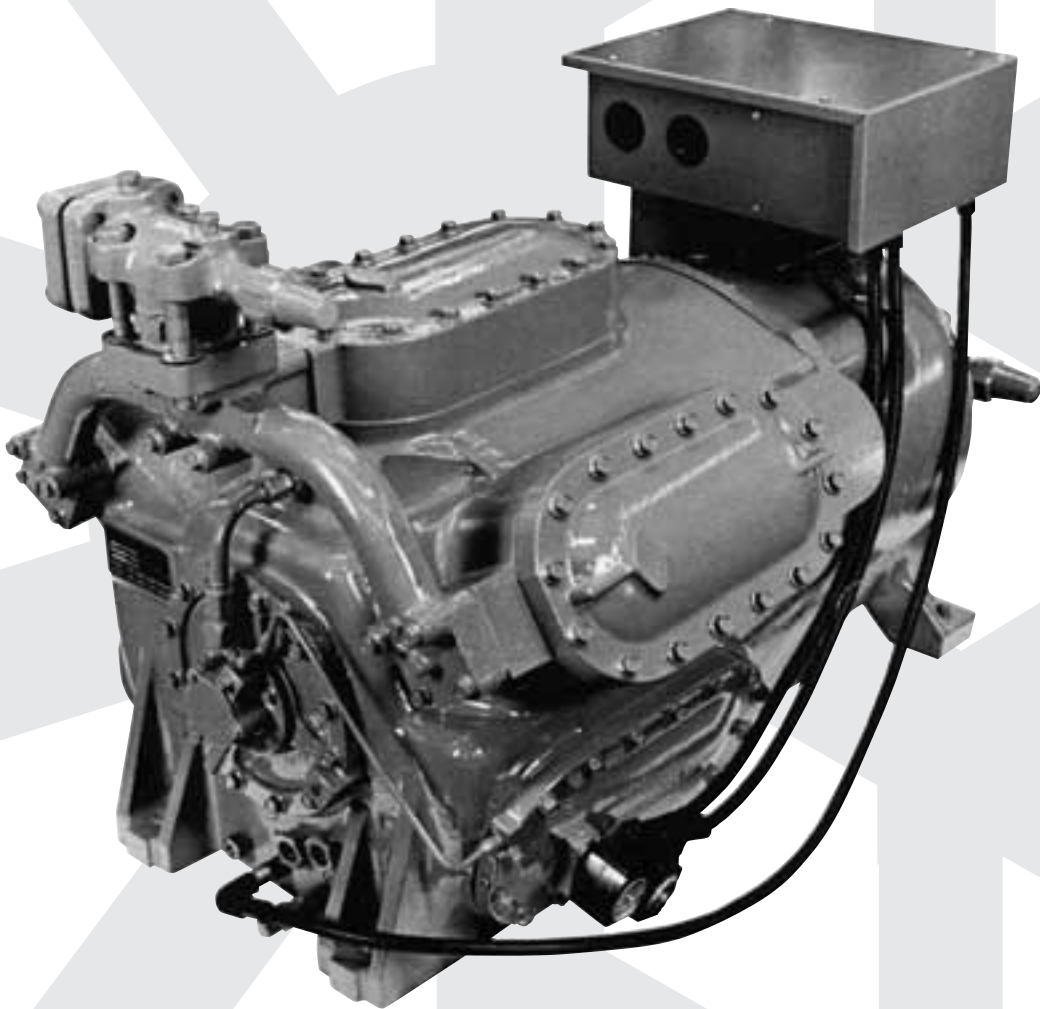


PC-Series

COMPRESSORS

ILLUSTRATED PARTS CATALOGUE



MODELS

PC 43, PC 63, PC 83 (SHORT STROKE)

PC 44, PC 64, PC 84 (LONG STROKE)

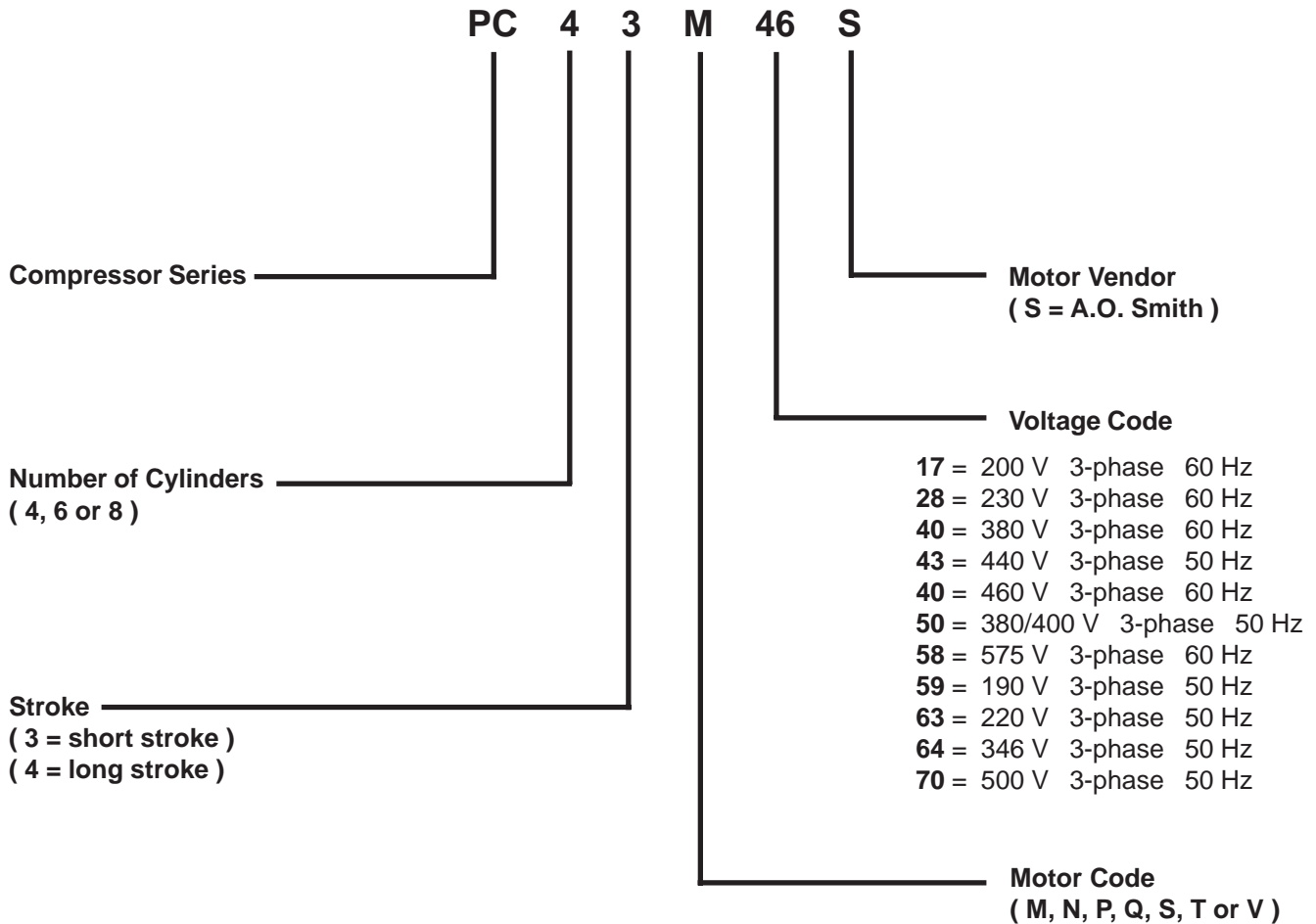

INTERNATIONAL

CE

Effective from 06/01

GB

NOMENCLATURE



Note: When ordering complete replacement compressors - please refer to the instructions and nomenclature table in Section 18

ORDERING INSTRUCTIONS

1. The symbol # preceding a part's item number indicates that it is York recommended stock part.
2. Carefully read all explanatory notes accompanying tables.
3. When ordering parts, state the part number of each item (as given in the parts tables), and the quantity required. Also state the compressor model number which is shown on the data plate at the oil pump end of the compressor.
4. To order parts or York remanufactured compressors, contact:

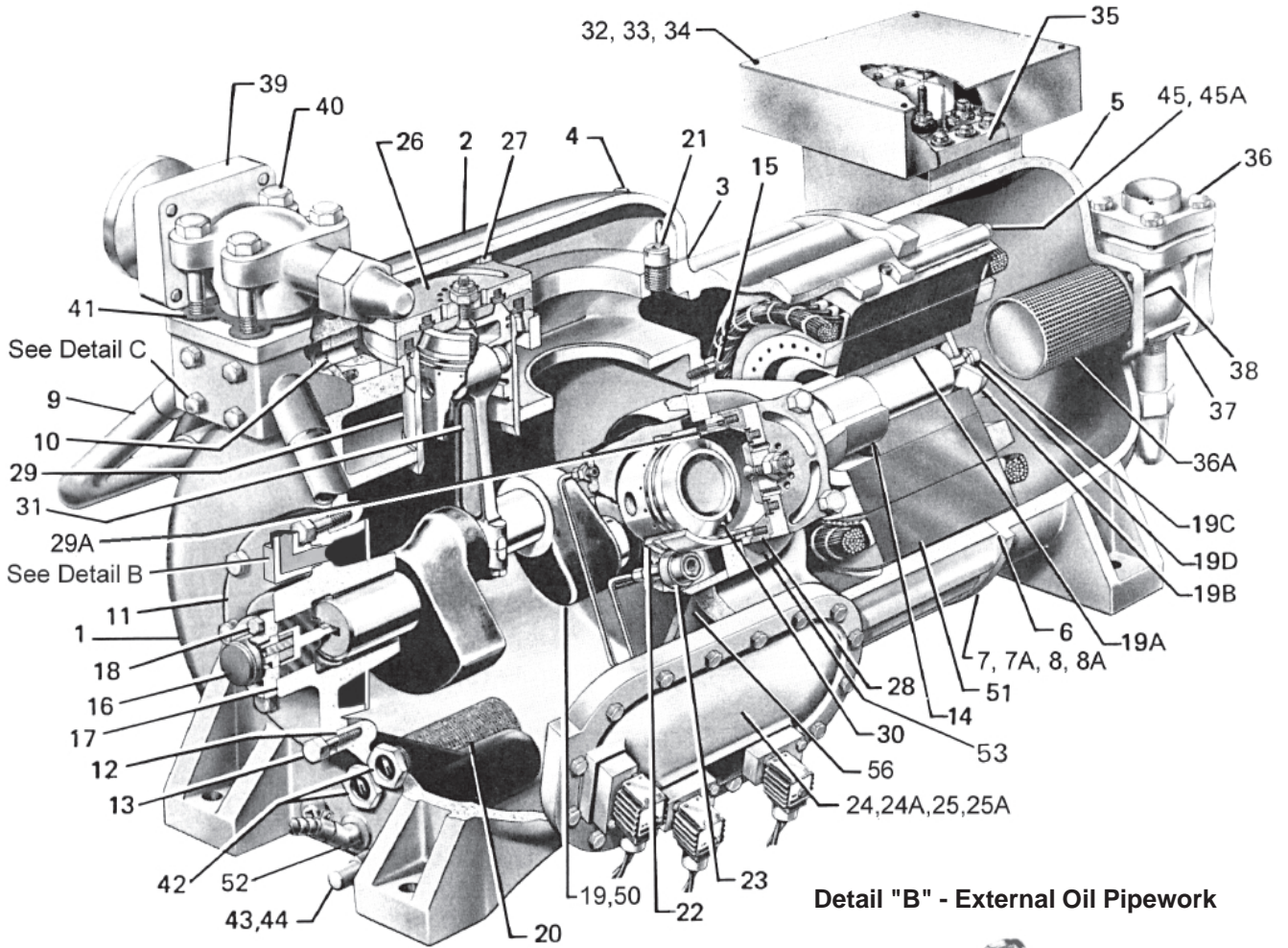
**EUROPEAN PARTS DISTRIBUTION CENTRE,
YORK International Ltd, Wickford, Essex, England.**

Telephone - (0)1268 57700 or Facsimile - (0)1268 577100

TABLE OF CONTENTS

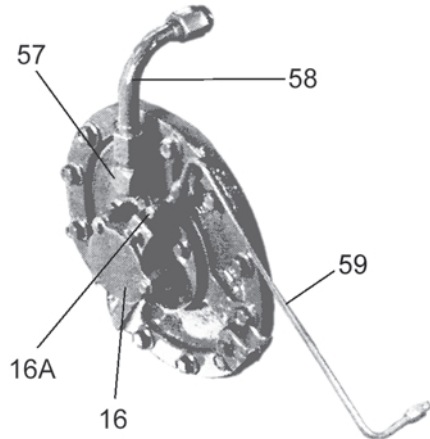
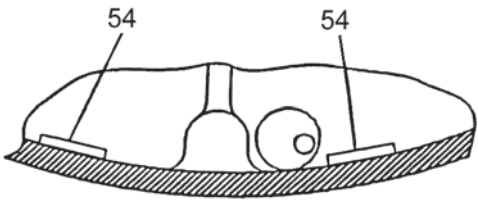
Section	Page
NOMENCLATURE	2
ORDERING INSTRUCTIONS	2
TABLE OF CONTENTS	3
1. COMPRESSOR COMPONENTS - GENERAL	4
2. CYLINDER HEADS AND TOP ACCESS COVERS	7
3. BEARING HEAD ASSEMBLIES	8
4. UNLOADING DEVICE	9
5. HAND HOLE COVERS	10
6. VALVE ASSEMBLIES	11
7. CYLINDER SLEEVES	12
8. PISTON ASSEMBLY	13
9. CONNECTING ROD ASSEMBLY	13
10. TERMINAL BOX / BLOCK ASSEMBLY	14
11. REPLACEMENT MOTORS	15
12. CRANKCASE HEATERS	15
13. EDUCTOR ASSEMBLY	16
14. LIQUID INJECTION SYSTEM	16
15. CRANKCASE FLOAT ASSEMBLY	17
16. SERVICE AIDS	18
17. TOP HEAD REBUILD KITS	18
18. REPLACEMENT COMPRESSORS	19

SECTION 1. COMPRESSOR COMPONENTS - GENERAL

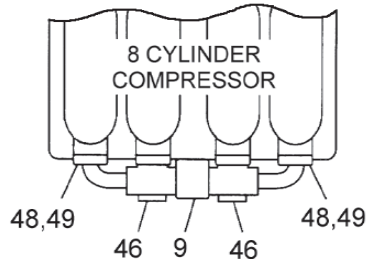
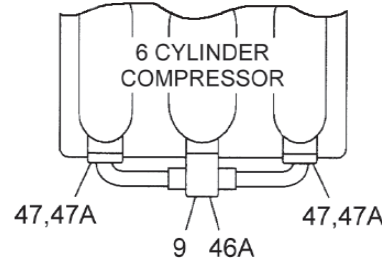
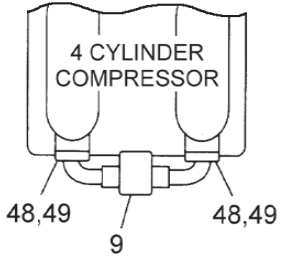


Detail "B" - External Oil Pipework

Detail "A" - Ceramic Magnets



Detail "C" - Discharge Manifold Components



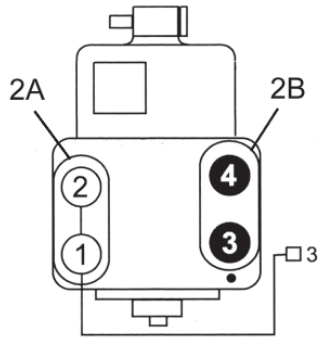
COMPRESSOR COMPONENTS - GENERAL				
ITEM	DESCRIPTION	P-SERIES COMPRESSOR:		
		4 CYLINDER	6 CYLINDER	8 CYLINDER
1	Housing, Compressor	064-49851	064-49852	064-49853
2	Head, Compressor	See Section 2		
3	Gasket, Head / Access Cover	064-49542	064-49542	064-49542
4	Screw, Head	021-17783	021-17783	021-17783
	Screw, Access Cover	021-17693	021-17693	021-17693
5	Cover, Motor	664-48363	664-48177	644-48178
6	Gasket, Motor Cover to Compressor	064-49549	064-49548	064-49548
7	Screw, Motor Cover to Compressor 1/2-13	021-18021	021-18021	028-18021
7A	Lockwasher 1/2"	221-05271-800	221-05271-800	221-05721-800
8	Nut, Hex 1/2-13, Motor Cover to Compr. (stud)	021-11154	021-11154	021-11154
8A	Washer, 1/2 " Clipped, Motor Cover to Compr. (stud)	021-17774	021-17774	021-17774
9	Manifold, Discharge	064-48340	064-48320	064-48341
10	Gasket, Discharge Manifold	064-49546	064-49546	064-49546
	Number required per compressor	(2)	(3)	(4)
11	Head, Bearing assembly, Oil Pump End	See Section 3		
12	Gasket, Bearing Head, Oil Pump End	064-49543	064-49543	064-49543
13	Screw, Bearing Head, Oil Pump End	021-17692	021-17692	021-17692
	Number required per compressor	(12)	(12)	(12)
14	Head, Bearing Assembly, Motor End	See Section 3		
15	Screw, Bearing Head, Motor End 7/16 - 14 x 1 1/2	221-10387-800	221-10387-800	221-10387-800
	(5 per pack) Number of packs required per compressor	(1)	(1)	(1)
#16	Pump, Oil	026-37522	026-37522	026-37522
16A	Valve, Access Tee (See Detail "B")	022-04060	022-04060	022-04060
17	Gasket, Oil Pump	064-49544	064-49544	064-49544
18	Screw, Oil Pump, 1/4-20x1-1/8	021-17689	021-17689	021-17689
	Number required per compressor	(6)	(6)	(6)
#19	Crankshaft:			
	-3 Stroke	664-49221	664-49222	664-49223
	-4 Stroke	664-49224	664-49225	664-49226
19A	Key, Motor	064-26560	064-26560	064-26560
19B	Washer, Shaft	064-21835	064-21835	064-21835
19C	Screw Cap 5/8-11 x 2 (5 per pack)	221-01630-800	221-01630-800	221-01630-800
19D	Lockwasher, Shaft (5 per pack)	221-05295-800	221-05295-800	221-05295-800
#20	Screen, Oil Strainer	029-20032	029-20032	029-20032
#21	Valve, Relief	022-03871	022-03871	022-03871
#22	Sleeve, Unloader	See Section 4		
#23	Device, Unloader			
24	Cover, Hand Hole, Plain	See Section 5		
24A	Gasket, Hand Hole Cover, Plain	064-49542	064-49542	064-49542
25	Cover, Hand Hole, Assembly - Unloader Valves	See Section 5		
25A	Gasket, Hand Hole Cover, Unloading	064-49547	064-49547	064-49547
#26	Valve Cage Assembly (Discharge)	See Section 6		
27	Screw, Discharge Valve Cage 3/8 - 16 x 2 - 5/8	021-16827	021-16827	021-16827
	Number required per compressor (4 per cage)	(16)	(24)	(32)
28	Plate Valve (Suction)	See Section 6		
29	Sleeve, Cylinder - Non-unloading	See Section 7		
29A	Sleeve Assembly, Cylinder - Unloading			

Table 1 continues ...

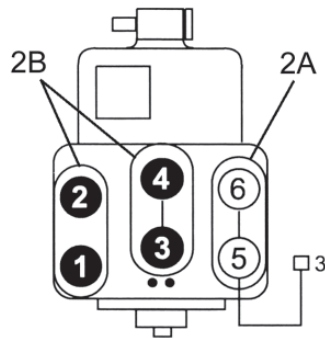
Continued

COMPRESSOR COMPONENTS - GENERAL				
ITEM	DESCRIPTION	P-SERIES COMPRESSOR:		
		4 CYLINDER	6 CYLINDER	8 CYLINDER
#30	Piston Assembly	See Section 8		
#31	Connecting Rod Assembly	See Section 9		
32	Terminal Box inc. Cover & Screws	See Section 10		
33	Terminal Strip			
34	Module, Motor Protector			
35	Block, Terminal			
36	Valve, Suction Stop			
36A	Suction Strainer	026-28473	026-28473	026-28474
37	Screw, Cap Suction Stop Valve (4 per valve)	021-16817	021-16817	021-16818
38	Gasket, Suction Valve to Motor Cover (2 per valve)	064-47079	064-47079	064-47204
39	Valve, Discharge Stop	022-01394	022-01394	022-02844
40	Screw, Cap Discharge Stop (4 required per valve)	021-16821	021-16821	021-16817
41	Gasket, Discharge Valve To Manifold	064-47078	064-47078	064-47079
#42	Sight Glass, Oil (2 Required)	026-17581	026-17581	026-17581
#43	Valve, Oil Charging	022-01582	022-01582	022-01582
44	Cap, Oil Charging Valve	023-00977	023-00977	023-00977
45	Screw, Motor to Compressor	See Section 11		
45A	Lockwasher Spring 7/16"	221-05270-800	221-05270-800	221-05270-800
46	Screw, Cap Hex 7/16" - 14 x 5 (5 per pack) Number required per compressor	- -	- -	221-08875-800 (2)
46A	Screw, Hex Flange, 3/8" Number required per compressor	- -	021-17782 (4)	- -
47	Screw, Cap Hex Number required per compressor	- -	021-17781 (4)	- -
47A	Screw, Cap Hex Number required per compressor	- -	021-17784 (4)	- -
48	Screw, Cap Hex 7/16" - 14 x 1 - 1/2 (5 per pack) Number required per compressor	221-01485-800 (2)	- -	221-01485-800 (2)
49	Washer, Plain 13/32" I.D. (10 per pack) Number required per compressor	221-01274-800 (1)	- -	221-01274-800 (1)
50	Washer, Thrust (Not Shown)	029-11098	029-11098	029-11098
#51	Motor	See Section 11		
52	Heater, Crankcase	See Section 12		
53	Drain Orifice Number required per compressor	064-48637 (1)	064-48637 (2)	064-48637 (3)
54	Ceramic Magnet Number required per compressor	029-22748 (2)	029-22748 (2)	029-22748 (2)
55	Suction Plenum Injection Orifice Number required per compressor	- -	023L00844 (2)	023L00844 (3)
56	Eductor Assembly (Not Shown)	See Section 13		
57	Elbow	023-18956	023-18956	023-18956
58	Connecting Pipe, Plenum to Bearing Head	364-49283	364-49284	364-49285
59	Connection, Capacity Control, Oil Pipe	364-48618	364-48618	364-48618
60	Liquid Injection Cooling System (Not Shown)	See Section 14		

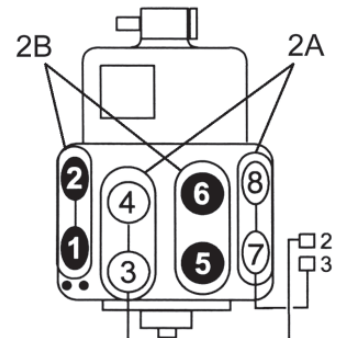
SECTION 2. CYLINDER HEADS AND TOP ACCESS COVERS
SECTION 1, ITEM 2



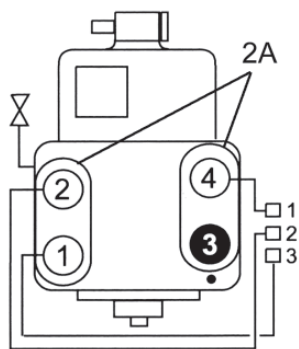
4 CYLINDER - 1 Step Unloading



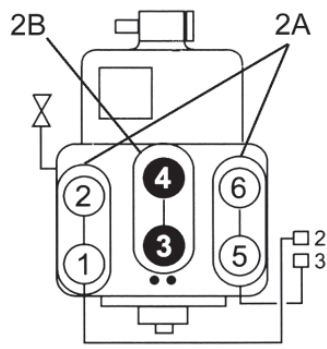
6 CYLINDER - 1 Step Unloading



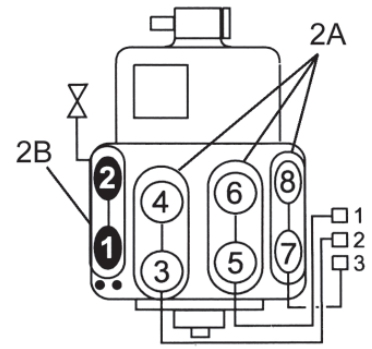
8 CYLINDER - 2 Step Unloading



4 CYLINDER - 3 Step Unloading



6 CYLINDER - 2 Step Unloading



8 CYLINDER - 3 Step Unloading



Cylinder Numbers



Unloading Cylinders



Permanently Loaded Cylinder(s)



Unloader Solenoid Numbers



Pressure Relief Valve



Liquid Injection Oil Cooling

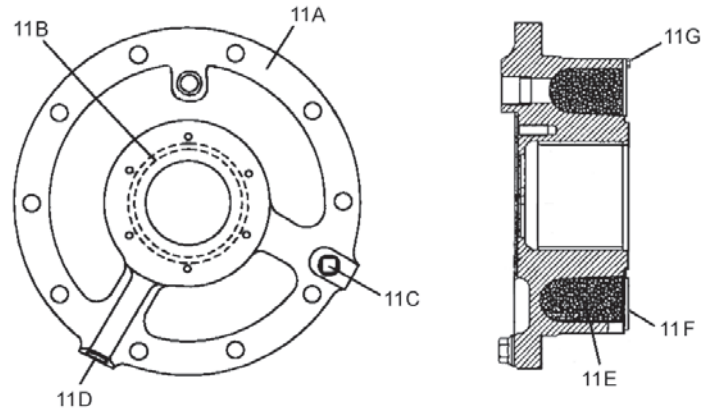
CYLINDER HEADS

ITEM	DESCRIPTION	PART NUMBER
2A	Cover, Access (unloading cylinders)	064-48176
2B	Head, Compressor (non-unloading cylinders)	064-48321

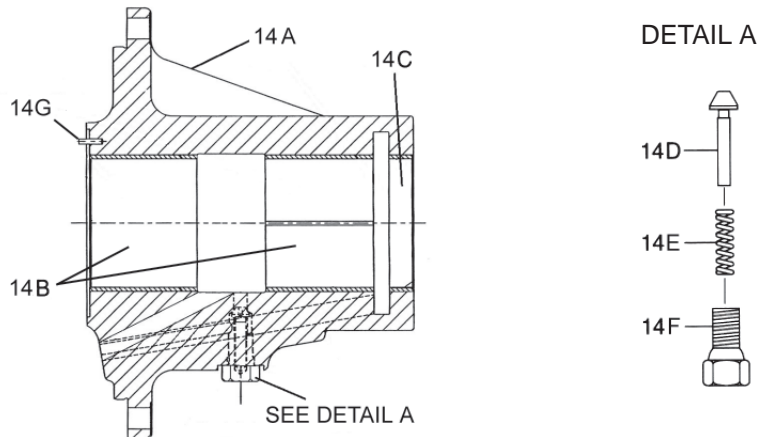
For Unloading Solenoid Valves and Coils - See Section 5
For Liquid Injection Cooling System Components - See Section 14

SECTION 3. BEARING HEAD ASSEMBLIES

SECTION 1, ITEMS 11 AND 14



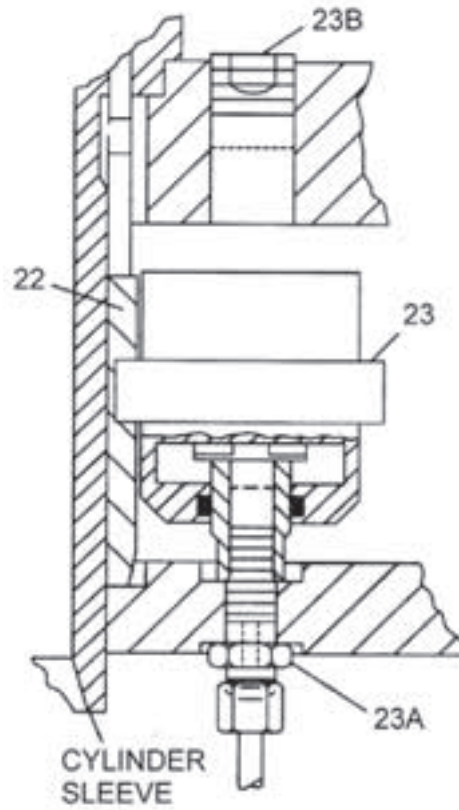
BEARING HEAD ASSEMBLY - PUMP END		
ITEM	DESCRIPTION	PARTNUMBER
11	Head, Bearing Assembly	664-49266
#11A	Head, Bearing, Pump End	664-49260
11B	Bearing, Crankshaft, 2.51" long	029-11097
11C	Plug, Pipe 1/4" - 18 Sq.Hd.	023-01972
11D	Plug, Pipe 3/8" - 18 SCK..	023-04298
11E	Precipitator	026-35313
11F	Cover, Pump End	064-49267
11G	Screw, Cap - Hex	021-01361



BEARING HEAD ASSEMBLY - MOTOR END		
ITEM	DESCRIPTION	PARTNUMBER
14	Head, Bearing Assembly	664-49228
#14A	Head, Bearing, Motor end	664-49227
14B	Bearing, Crankshaft, 2.51" long (2 required)	029-11097
14C	Bearing, Crankshaft, Oil Control, 0.5" long	029-22495
14D	Plunger, Oil Relief Valve	065-01331
14E	Spring, Helical	029-06143
14F	Cap, Seal, Oil Relief Valve	065-06394
14G	Pin, Roll 1/8" Dia. x 3/8 lg.	029-05395

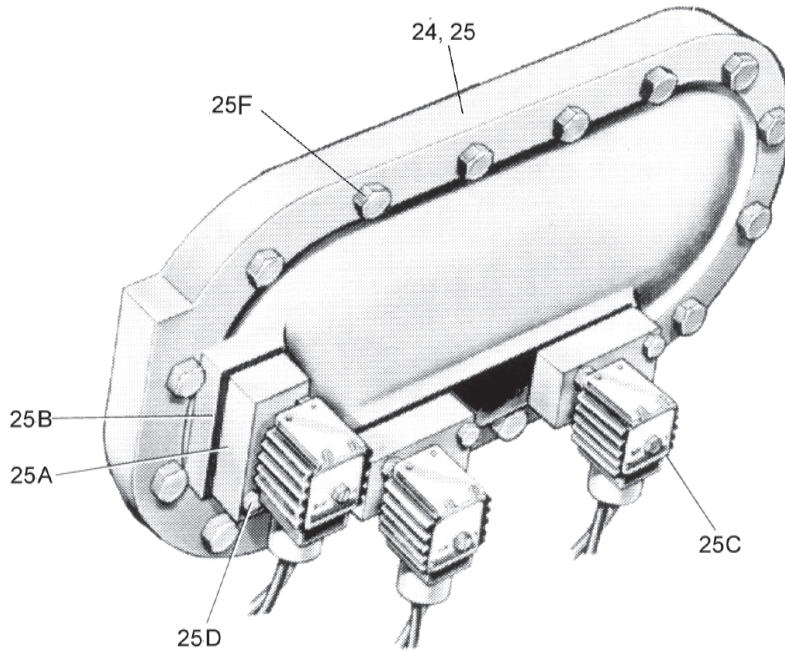
SECTION 4. UNLOADING DEVICE

SECTION 1, ITEMS 22 AND 23



UNLOADING DEVICE		
ITEM	DESCRIPTION	PART NUMBER
#22	Sleeve, Unloader	064-48636
#23	Device, Unloader	364-49846
#23A	Union, Unloader Device	023-19094
23B	Plug, Pipe 3/8" NPTE	023-04298

SECTION 5. HAND HOLE COVERS
SECTION 1, ITEMS 24 AND 25
(FOR FLOAT VALVE ASSEMBLY INC. HAND HOLE COVER - SEE SECTION 15)



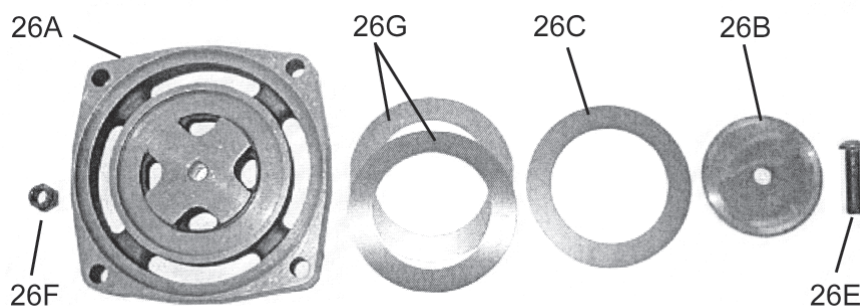
Note : For Number of Unloading Solenoid Valve Applications - See Section 2

HANDHOLECOVER - UNLOADING				
ITEM	DESCRIPTION	PART NUMBER		
		1 SOLENOID UNLOADING	2 SOLENOID UNLOADING	3 SOLENOID UNLOADING
24	Cover, Hand Hole, Plain (not shown)	664-21645	664-21645	664-21645
*25	Cover, Hand Hole, Unloading	664-47226	664-47225	664-47222
#25A	Valve, Solenoid Without Coil (Product Engineering)	025-26270-012	025-26270-012	025-26270-012
25B	Gasket, Solenoid valve to cover	064-49540	064-49540	064-49540
#25C	Coil, Solenoid Valve	- 110V	025L02489	025L02489
		- 230V	025L02488	025L02488
25D	Screw, 1/4 20 UNC. - 2 AX 1-1/4 (5 per pack) 1 pack required per valve	221-18003-800	221-18003-800	221-18003-800
25E	Plug, Pipe Soc. Hd 1/8 NPT (not shown) Number required	023-01970 (3)	023-01970 (5)	023-01970 (7)
25F	Screw, Cap Hex. Number required per cover	021-17692 (16)	021-17692 (16)	021-17692 (16)

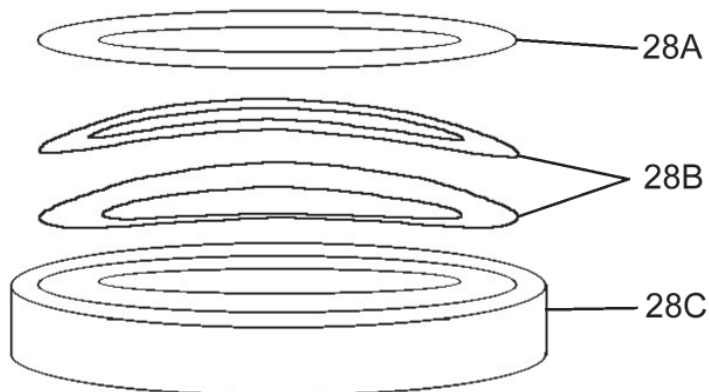
* Item 25 does not include items 25A - 25F

SECTION 6. VALVE ASSEMBLIES

SECTION 1, ITEMS 26 AND 28 (FOR TOP HEAD REBUILD KITS SEE SECTION 16)



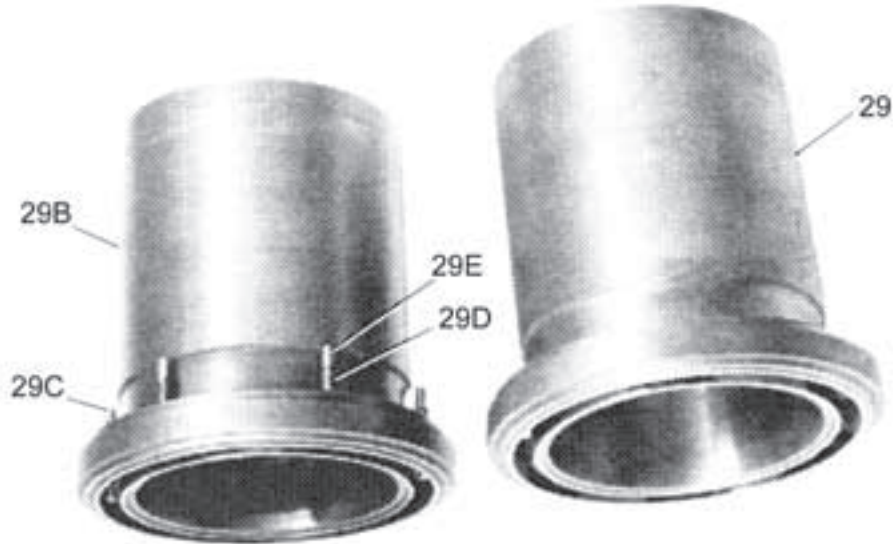
DISCHARGE VALVE CAGE ASSEMBLY		
ITEM	DESCRIPTION	PART NUMBER
26	Cage, Discharge Valve Assembly Assembly Includes the following items:	364-49722
26A	Cage, Discharge Valve	664-49658
26B	Plate, Inner Valve	664-48032
26C	Valve, Discharge	064-43012
26E	Screw, Cap	021-17649
26F	Nut, Hex Self (5 per pack)	221-09932-800
26G	Spring, Wave (2 per Cage Assembly)	022-10021



SUCTION VALVE PLATE ASSEMBLY		
ITEM	DESCRIPTION	PART NUMBER
28	Plate, Valve Suction, Assembly Assembly includes the following items:	664-49723
28A	Valve, Suction	022-10020
28B	Spring, Wave (2 per pack)	222-09742-800
28C	Valve Plate	664-49657

SECTION 7. CYLINDER SLEEVES

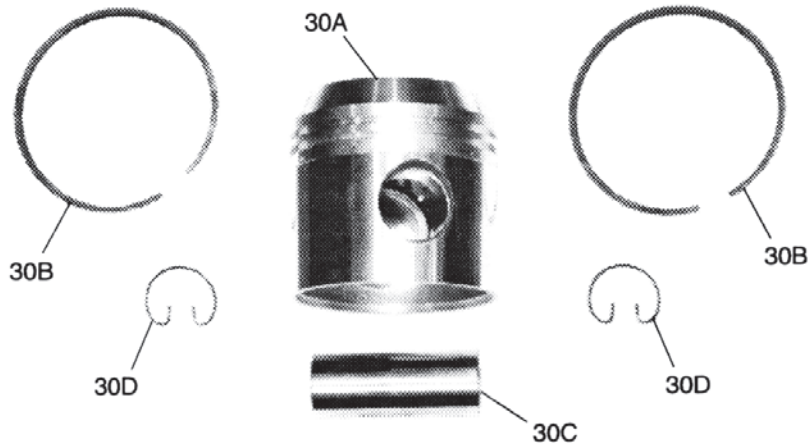
SECTION 1, ITEM 29)



CYLINDER SLEEVE - NON-UNLOADING		
ITEM	DESCRIPTION	PART NUMBER
#29	Sleeve, Cylinder (Number required - See Section 2)	664-49654

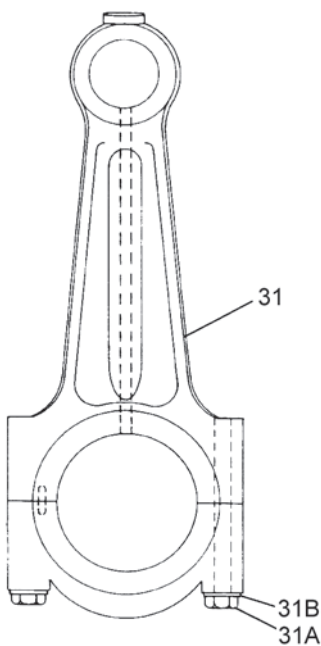
CYLINDER SLEEVE - UNLOADING		
ITEM	DESCRIPTION	PART NUMBER
#29A	Sleeve Assembly, Cylinder (Number required - See Section 2) Each Assembly includes the following items	664-49845
29B	Sleeve, Cylinder	664-49654
29C	Pin, Lift (24 per pack) 6 Pins required per cylinder	229-19841-800
29D	Spring (24 per pack) 6 Springs required per cylinder	229-13487-800
29E	Ring, Retainer (12 required per cylinder)	029-09016

SECTION 8. PISTON ASSEMBLY
SECTION 1, ITEM 30



PISTON ASSEMBLY		
ITEM	DESCRIPTION	PART NUMBER
#30	Piston Assembly Includes the following items:	364-46757
30A	Piston, Bare	064-46538
30B	Ring, Piston (2 required)	029-15175
30C	Pin, Piston (2 per pack)	229-13090-800
30D	Retainer (2 required) (8 per pack)	229-13091-800

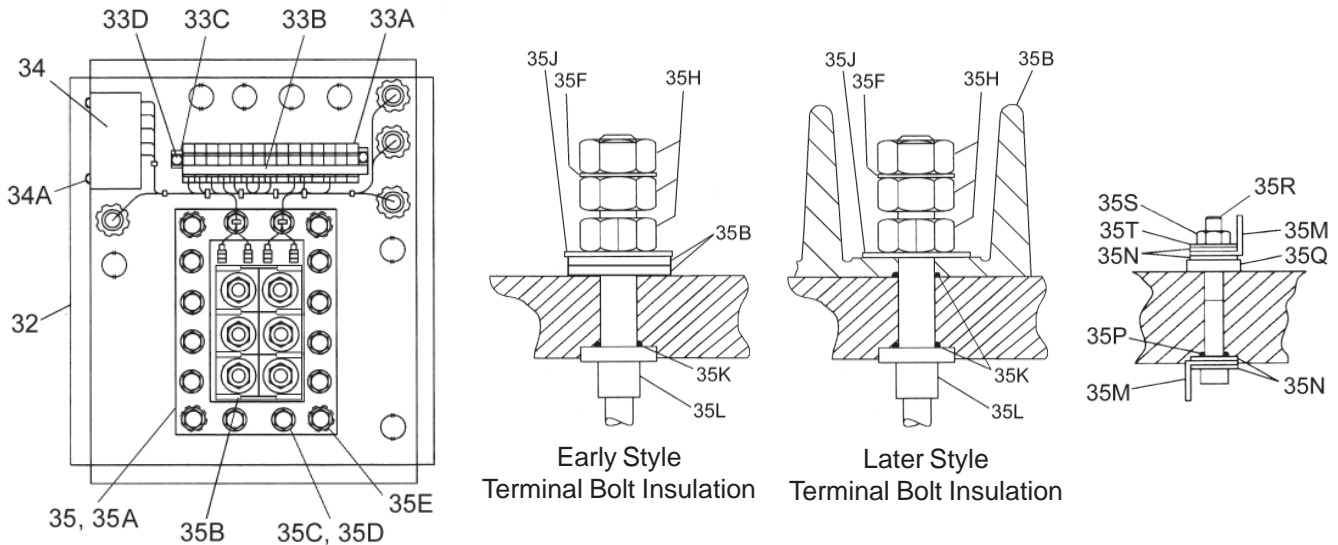
SECTION 9. CONNECTING ROD ASSEMBLY
SECTION 1, ITEM 31



CONNECTING ROD WITH WRIST PIN LUBRICATION HOLE			
ITEM	DESCRIPTION	PART NUMBER	
		"-3" STROKE	"-4" STROKE
#31	Rod, Connecting Assembly	364-49011	364-49012
31A	Bolt (2 required)	021-13665	021-13665
31B	Washer (10 per pack)	221-01262-800	221-01262-800

SECTION 10. TERMINAL BOX / BLOCK ASSEMBLY

SECTION 1, ITEMS 32, 33, 34 & 35



TERMINAL BOX / BLOCK ASSEMBLY			
ITEM	DESCRIPTION	QUANTITY	PART NUMBER
*32	Terminal Box, inc. Cover & Screws - To order, the unit model and serial number MUST be given.		
33	Terminal Strip comprises items 33A-33D		
33A	Block Terminal, Flat Base	15	025-20944
33B	Strip, Marker	1	025-30960
33C	Block, Terminal End	1	025-20946
33D	Screw, Tap Thread	2	021-13784
34	Module Motor Protection : Select Module for relevant voltage		
	24V	1	025-29939
	120V, 240V	1	398L00512
34A	Screw Mach. Pan Head (10 per pack)	2	221-03743-800
*35	Terminal Block	1	025-30402
35A	Gasket, Terminal Block	1	064-49545
35B	Washer, Insulating (early compressors) (10 per pack)	12	228-09410-800
	Spacer, Insulating (later compressors)	1	025-30978
35C	Bolt assembly - Screw, Hex, Flange	16	021-17691
35D	Terminal Block Washer, Plain 7/8"	16	021-01267
35E	to Compressor Lockwasher (int. 3/8") (Corner bolts only)	4	021-01155
35F	Bolt Assembly - Lockwasher (int. TH.)	6	021-16246
35H	Main Motor connections Nut, Hexagon 7/16"	18	021-12724
35J	Washer, Plain	6	021-14111
35K	Seal, 'O' Ring 7/16"	12	028-12551
35L	Bolt, Terminal	6	021-18660
35M	Term. Push-on Adpt. 90 Deg.	8	025-18650
35N	Washer, Plain	16	021-18694
35P	Seal, 'O' Ring	4	028-09347
35Q	Washer, Terminal	4	028-09525
35R	Screw, Cap Hex. Socket Head	4	021-14817
35S	Nut, Hex Mech.	4	021-08661
35T	Lockwasher (int. TH.) (20 per pack)	4	221-01133-800

* Item 35 does not include items 35A - 35T.

CAUTION: Item 35L The main Terminal Bolts are manufactured from copper and should be tightened to a torque value of 19-22lb/ft. These bolts are plated and are very similar in appearance to older J-Series Compressor bolts made from steel, which use a higher torque value. A magnet should be used to confirm the correct bolt material before fitting.

SECTION 11. REPLACEMENT MOTORS

SECTION 1, ITEM 45 & 51

REPLACEMENT MOTORS - Compressor Series PC (STATOR / ROTOR 6 WIRE PROTECTION).									
ITEM	DESCRIPTION	MOTOR SIZE CODES - (See Notes 1 to 4)							
		M	N	P	Q	S	T	V	
*45	Screw, Motor to Compressor Number Required	021-16819 (4)	021-16819 (4)	021-16819 (4)	021-16820 (4)	021-16820 (4)	021-16820 (4)	021-16820 (4)	
45A	Lockwasher 7/16" Number Required	021-05270 (4)	021-05270 (4)	021-05270 (4)	021-05270 (4)	021-05270 (4)	021-05270 (4)	021-05270 (4)	
51	Part Wind	Motor Code 17	324-25506-001	324-25506-008	324-25506-015	324-25506-022	324-25506-029	-	-
		Motor Code 28	324-25506-002	324-25506-009	324-25506-016	324-25506-023	324-25506-030	-	-
		Motor Code 59	324-25506-003	324-25506-010	324-25506-017	324-25506-024	324-25506-031	324-25506-039	324-25506-047
		Motor Code 40	324-25506-003	324-25506-010	324-25506-017	324-25506-024	324-25506-031	324-25506-039	324-25506-047
		Motor Code 46	324-25506-004	324-25506-011	324-25506-018	324-25506-025	324-25506-032	324-25506-040	324-25506-048
		Motor Code 50	324-25506-004	324-25506-011	324-25506-018	324-25506-025	324-25506-032	324-25506-040	324-25506-048
		Motor Code 58	324-25506-005	324-25506-012	324-25506-019	324-25506-026	324-25506-033	324-25506-041	324-25506-049
		Motor Code 70	324-25506-005	324-25506-012	324-25506-019	324-25506-026	324-25506-033	324-25506-041	324-25506-049
		Motor Code 63	324-25506-006	324-25506-013	324-25506-020	324-25506-027	324-25506-034	-	-
	Motor Code 43	324-25506-007	324-25506-014	324-25506-021	324-25506-028	324-25506-035	324-25506-043	324-25506-051	
	Motor Code 64	324-25506-101	324-25506-102	324-25506-103	324-25506-104	324-25506-105	324-25506-106	324-25506-107	
	Star/Delta								
	Motor Code 50	-	-	324L00556-009	324L00556-010	324L00556-011	324L00556-012	-	

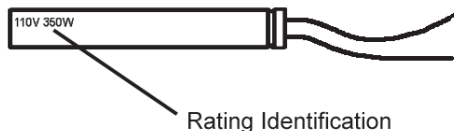
* Item 45 - (refer to Fig. 1). To be ordered only if existing screws are damaged. Reuse existing screws whenever possible.

NOTES

- 1) For Voltage Range and Frequency relating to Motor Codes, See Nomenclature Section on Page 2.
- 2) Replacement motors must be the same size as the original (indicated by sixth digit of model number).
- 3) Rotors and stators are not available separately.
- 4) The unused protector leads should be cut-off in the area where they exit the bundle. They should be cut at different lengths (approximately 1/4" difference) to prevent the bare ends from touching one another. The remaining portion of the unused protector leads must then be tie-wrapped rigidly to the stator coils to prevent the exposed ends from touching any other components.

SECTION 12. CRANKCASE HEATERS

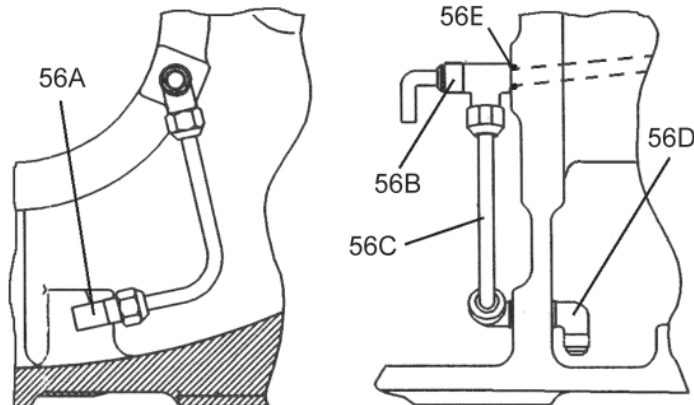
SECTION 1, ITEM 52



HEATER, CRANKCASE		
ITEM	RATING	PART NUMBER
52	110 V / 350 W	025L02392
	110 V / 450 W	025L02400
	240 V / 350 W	025L02296
	240 V / 450 W	025L02297

SECTION 13. EDUCTOR ASSEMBLY

SECTION 1, ITEM 56



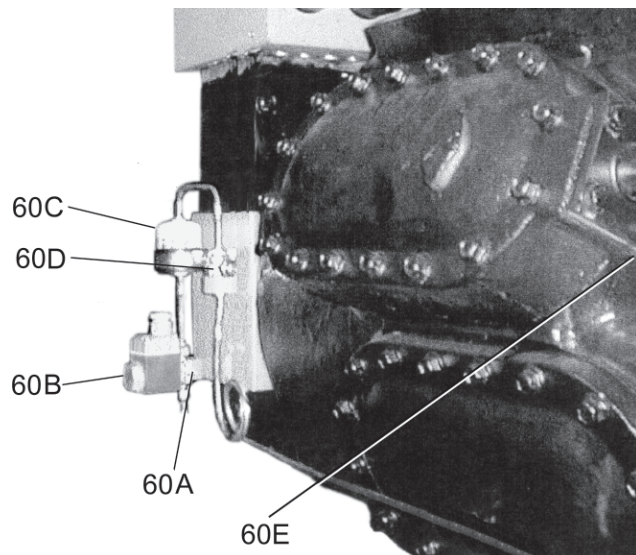
EDUCTOR ASSEMBLY		
ITEM	DESCRIPTION	PART NUMBER
56	Eductor Assembly	
56A	Check Valve	022-09741
56B	Eductor, Oil Return	022-09716
56C	Connection, Eductor to Check Valve	664-49345
56D	Elbow	032-00868
56E	O' Ring	028-13896

SECTION 14. LIQUID INJECTION COOLING SYSTEM

SECTION 1, ITEM 60

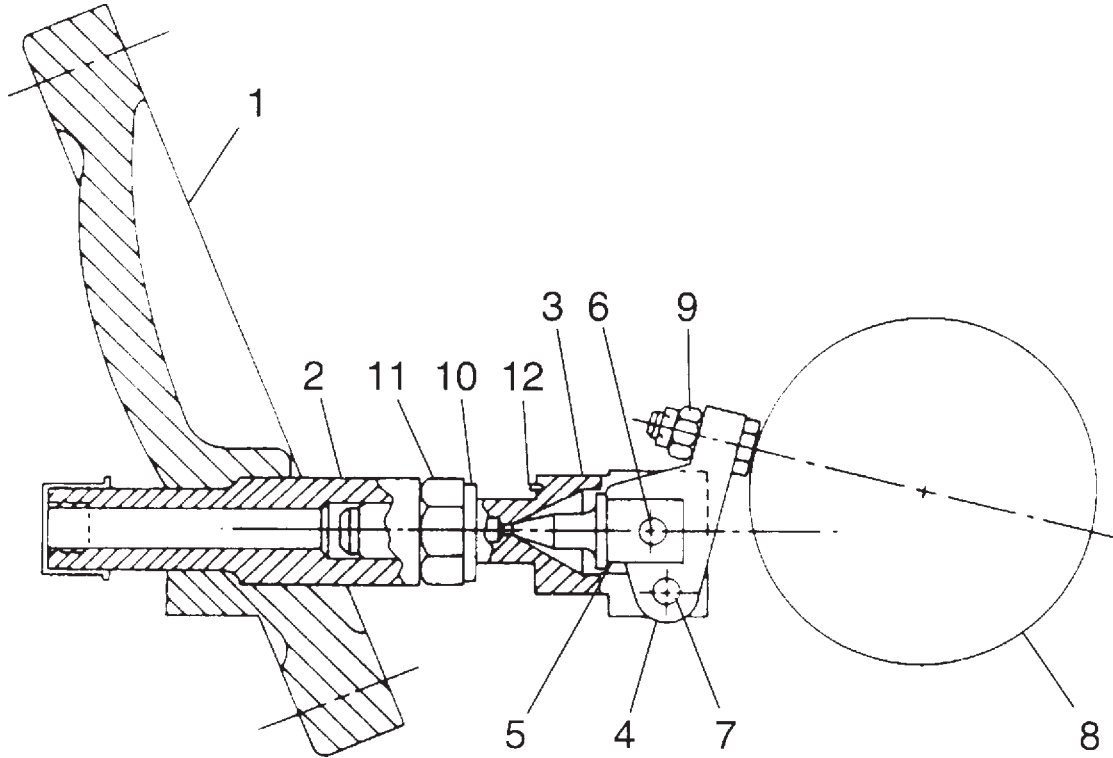
Notes

1. For application of Liquid Injection Cooling System - See Section 2
2. Compressors on AWHP, LCHM/LCHHM and YCAJ Heat Recovery Units have two solenoid valves (60A) and coils (60B) fitted.
3. 8 Cylinder compressors manufactured before April 2001 (according to Unit Data Plate) use the same solenoid valve as 4 & 6 Cylinder compressors



LIQUID INJECTION SYSTEM			
ITEM	DESCRIPTION	PART NUMBER	
		4 & 6 Cylinder	8 Cylinder
60A	Valve, Solenoid (see notes 2 and 3)	025L01523	025L02873
60B	Coil (see note 2)	025L02381	025L02381
60C	Strainer / Drier	023L00842	023L00889
60D	Ball Valve	022L00088	022L00088
60E	Injection Orifice 1.2mm Dia.	023L00844	023L00844

SECTION 15. CRANKCASE FLOAT ASSEMBLY



CRANKCASE FLOAT ASSEMBLY		
ITEM	DESCRIPTION	PART NUMBER
-	Crankcase Float Includes:	364-26809
1	Cover, Handhole	664-26808
2	Adaptor	064-26807
3	Valve Body	064-45531
4	Lever, Float	068-04542
5	Valve, Float	068-04545
6	Pin, Valve	068-01594
7	Pin, Lever	065-02071
8	Ball, Float	022-00530
9	Nut-Hex Self-locking - (5 per pack)	221-09610-800
10	Lockwasher	021-05273
11	Nut, Hex Jam - (10 per pack)	221-08073-800
12	Pin, Roll - (5 per pack)	229-08228-800

SECTION 16. REBUILD KITS

The price of the kits shown below, is considerably less than the total price of the individual parts. These kits provide a convenient, economical method of ordering replacement parts.

GASKET KIT

GASKET KITS	
NO. OF COMPRESSOR CYLINDERS	PART NUMBER OF KIT
4	398L00596
6	398L00597
8	398L00598

TOP HEAD REBUILD KITS

The "Top Head Rebuild Kits" contain: suction and discharge valves, suction and discharge springs, top head gaskets, manifold gaskets and cage nuts-recommended to be replaced when valve replacement is required.

Each kit contains both types of discharge spring to cover the "old design" discharge cage and the "new design" discharge cage.

Each kit has all the recommended parts to service a complete compressor.

A threaded torque value is included with each kit.

Valve replacement should be done annually, or every 5,000 hours of operation.

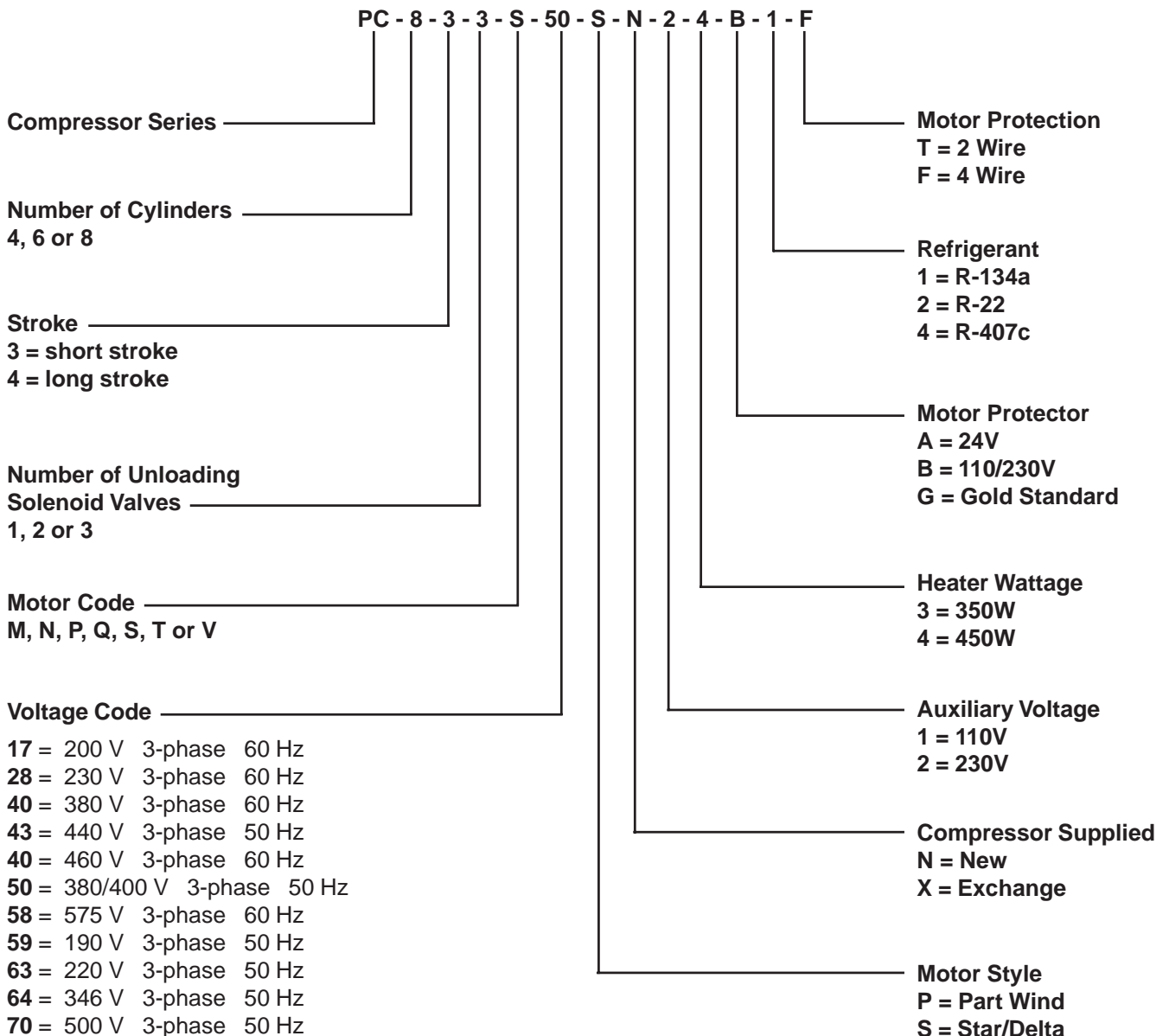
TOP HEAD REBUILD KITS	
NO. OF COMPRESSOR CYLINDERS	PART NUMBER OF KIT
4	398L00654-001
6	398L00654-002
8	398L00654-003

SECTION 17. SERVICE TOOLS

SERVICE TOOLS	
ITEM	PART NUMBER
Valve Retaining Clip	064-37274
Bearing Removal Tool	364-37260
Rotor Mandrel	364-37273
Stator Remmoval Tool	029-13597

SECTION 18. REPLACEMENT COMPRESSORS

To improve our response time to supply replacement compressor part numbers we have changed our part numbers to incorporate the accessories you require. These new part numbers are based on the original nomenclature found on the compressor data plate. First letter 'PC' is the compressor Series, next the Number of Cylinders, then the Stroke 3 or 4, followed by the Number of Unloader Valves, the Motor Code letter and the Voltage Code number. For the following information you may need to check the Unit Specification. The next letter is the Motor Style, followed by the Auxiliaries Voltage and the Heater Wattage number, letter for the Motor Protection style/voltage, then the letter for the 2 or 4-wire type of Motor Protection.





YORK INTERNATIONAL

YORK INTERNATIONAL LTD.
Gardiners Lane South, Basildon, Essex, SS14 3HE, England
For further information, please contact your local area Sales Office.

Part number 035L02426-000 (06/01)

Subject to change without notice
ALL RIGHTS RESERVED