

OPTYMA PLUS™ R404A/R507 LBP/MBP



Cold Room

OPTYMA PLUS™ R404A is a reliable choice for use in many MBP applications such as milk cooling, dairy and general food storage. It is equally suitable for several LBP applications, for example deep freeze storage.

OPTYMA PLUS™ R134a MBP



Bottle Cooler

OPTYMA PLUS™ R134a is ideal for use in MBP applications such as display cabinets and bottle coolers. It is also a good choice in non-commercial applications, such as air driers that are installed in environments characterised by warm ambient conditions and high evaporating temperatures

OPTYMA PLUS™ R407C MBP



Air Conditioning in small shops

OPTYMA PLUS™ R407C is perfect for small MBP applications such as small water chillers.

OPTYMA PLUS™

– the low noise condensing units for quick installation



In designing our new OPTYMA PLUS range we listened to our customers, utilised all our engineering skills and combined the very best design knowledge to create a fully factory-built condensing unit ready for quick installation and quiet operation. OPTYMA PLUS is a unique integral Danfoss condensing unit built around Danfoss components.


As standard we supply the compressor, fan speed control, filter drier, shut off valve, pressure switch, magnetic contactor, sight glass and electrical fuse all within a robust weather proof housing. A perfect cooling solution for typical food retail, petrol forecourt sites and cold room and freezer applications.

All units are fully wired and factory tested. Installation is effortlessly simple: just mount the unit, switch on the power, and the cooling process is up and running.

OPTYMA PLUS can be located anywhere. Acoustic insulation and fan speed reduction during low capacity operation periods makes the operation of OPTYMA PLUS so smooth and quiet that it will not disturb the peace in your local environment.

Installer benefits	End-user benefits	Product advantages
<ul style="list-style-type: none"> ✦ An integrated Danfoss design ✦ Easy maintenance: just remove the panels and you have easy access to the components ✦ Outstanding performance even in the toughest applications ✦ A minimum size footprint enabling installation in small spaces without compromising the units' performance or service accessibility ✦ Common Danfoss components all stocked locally by wholesalers 	<ul style="list-style-type: none"> ✦ Low noise operation ✦ Modern practical design with a neutral colour to fit in with its surroundings ✦ Strong weather resistant housing with lasting durability even in the harshest environments ✦ Reliable high ambient operation and proven reliability in the most demanding applications ✦ Energy saving benefits with fan speed control and selection of energy efficient components 	<ul style="list-style-type: none"> ✦ Energy efficient ✦ Low energy consumption ✦ Fully weatherproof housing made from epoxy powder coated steel ✦ Electrical box : IP54 ✦ Extremely low noise level ✦ Small dimensions

OPTYMA PLUS™ R404A/R507 LBP

	Test conditions	Unit	Platform	Code number	Electrical code	HP	Condenser coil			Condenser fan	Ambient °C	Capacity evaporating te			
							Type	Airflow [m³/h]	Int. volume [L]	Fan blade Ø [mm]		-45	-40	-35	-30
	SH 10K	OP-LPHC018	SC	114X3108	G	¾	A6	1.500	1.6	1×356	27	276	384	516	671
											32	239	338	459	603
											38	189	280	389	521
											43			331	452
		OP-LPHC026	GS	114X3116	G	1	A6	1.500	1.6	1×356	27	390	550	741	968
											32	328	473	650	859
											38	255	386	545	733
											43			461	632
		OP-LPHC048	NT	114X3224	G	2 ½	C6	3.000	1.1	1×406	27	485	769	1.109	1.503
											32	396	659	971	1.331
											38	290	528	808	1.128
											43		422	675	962
OP-LPHC048	NT	114X3232	E	2 ½	C6	3.000	1.1	1×406	27	485	769	1.109	1.503		
									32	396	659	971	1.331		
									38	290	528	808	1.128		
									43		422	675	962		
OP-LPHC068	NT	114X3240	G	3 ½	D6	2.600	2.2	1×406	27	969	1.400	1.911	2.503		
									32	815	1.212	1.681	2.226		
									38	650	1.007	1.428	1.913		
									43		852	1.232	1.669		
OP-LPHC068	NT	114X3248	E	3 ½	D6	2.600	2.2	1×406	27	969	1.400	1.911	2.503		
									32	815	1.212	1.681	2.226		
									38	650	1.007	1.428	1.913		
									43		852	1.232	1.669		
OP-LPHC096	NT	114X3356	E	5	F6	6.100	3.4	1×609	27	1223	1.792	2.388	3.227		
									32		1.483	2.099	2.872		
									38		1.194	1.742	2.432		
									43		957	1.445	2.062		
OP-LPHC136	NT	114X3364	E	7	F6	6.100	3.4	1×609	27	1.847	2.611	3.550	4.674		
									32		2.275	3.143	4.177		
									38		1.881	2.660	3.586		
									43		1.562	2.266	3.100		
OP-LPHC271	NT	114X3480	E	13 ½	J6	12.200	6.9	2×609	27	3.900	5.530	7.517	9.871		
									32	3.370	4.894	6.736	8.906		
									38	2.721	4.107	5.767	7.711		
									43		3.447	4.946	6.696		

Test condition

Superheat 10K

Electrical code

E Compressor 400 V/3 phase/50 Hz, fan 230 V/1 phase/50 Hz

G Compressor 230 V/1 phase/50 Hz, fan 230 V/1 phase/50 Hz

EN 13215

Subcooling within the limits of the condensing unit

in [W] at mperature [°C]				RGT 20 -35°C EN 13215 (ref. point)	Receiver volume [L]	Dimensions [mm]			Connection		Weight Gross/Net [kg]	Sound power level dB(A)	Sound pressure level 10 m dB(A)	Com- pressor	
-25	-20	-15	-10			Housing	Height H	Width W	Depth D	Suction line					Liquid line
854	1.068	1.312	1.591		1.2	1	652	906	430	½	¾	96/64	61	30	SC18CLX
774	973	1.202	1.463	510											
676	858	1.067	1.307												
594	760														
1.233	1.536	1.879	2.261		1.2	1	652	906	430	¾	¾	102/76	61	30	GS26CLX
1.104	1.385	1.702	2.059	725											
953	1.207	1.495	1.819												
831	1.062														
1.951	2.445	2.981	3.557		4.2	2	760	1.053	480	¾	¾	116/82	72	41	NTZ048
1.738	2.188	2.675	3.198	1.087											
1.487	1.883	2.313	2.774												
1.282	1.634														
1.951	2.445	2.981	3.557		4.2	2	760	1.053	480	¾	¾	116/82	72	41	NTZ048
1.738	2.188	2.675	3.198	1.087											
1.487	1.883	2.313	2.774												
1.282	1.634														
3.177	3.928	4.751	5.640		4.2	2	760	1.053	480	¾	¾	118/84	71	39	NTZ068
2.843	3.534	4.291	5.112	1.884											
2.464	3.082	3.761	4.499												
2.165	2.720														
3.177	3.928	4.751	5.640		4.2	2	760	1.053	480	¾	¾	118/84	71	39	NTZ068
2.843	3.534	4.291	5.112	1.884											
2.464	3.082	3.761	4.499												
2.165	2.720														
4.250	5.469	6.889	8.520		7.0	3	975	1.406	550	¾	¾	161/115	73	42	NTZ096
3.816	4.943	6.261	7.779	2.338											
3.279	4.293	5.486	6.868												
2.824	3.744														
5.988	7.496	9.191	11.068		7.0	3	975	1.406	550	1 ½	½	161/115	73	42	NTZ136
5.387	6.776	8.339	10.073	3.518											
4.668	5.911	7.318	8.881												
4.076	5.197														
12.591	15.685	19.113	22.872		14.0	4	1.794	1.420	650	1 ¾	¾	329/275	78	47	NTZ271
11.411	14.254	17.410	20.869	7.544											
9.949	12.483	15.312	18.416												
8.710	10.986														

EN 13215

Information point RGT 20

Constant Return Gas Temperature 20°C

Ambient temperature = +32°C


Subcooling within the limits of the condensing unit

Sound measurement done in accordance with ISO 3743-1 and ISO 3744.

MBP measured according to EN 13215 @ -10°C suction, +32°C ambient, SH 10 K

LBP measured according to EN 13215 @ -25°C suction, +32°C ambient, SH 10 K

OPTYMA PLUS™ R404A/R507 MBP

	Test conditions	Unit	Platform	Code number	Electrical code	HP	Condenser coil			Condenser fan	Ambient °C	Cap evaporation			
							Type	Airflow [m³/h]	Int. volume [L]	Fan blade Ø [mm]		-30°C	-25°C	-20°C	-15°C
	SH 10K	OP-MPHC010	SC	114x4100	G	1/3	A6	1.500	1.6	1x356	27			621	776
											32			565	708
											38			496	626
											43				557
		OP-MPHC018	SC	114X4108	G	5/8	A6	1.500	1.6	1x356	27			1.050	1.294
											32			953	1.181
											38			838	1.045
											43				932
		OP-MPZC030	MT	114X4216	G	1 1/2	C6	3.000	1.1	1x406	27	645	971	1.367	1.832
											32	561	860	1.223	1.649
											38	465	734	1.056	1.433
											43	389	632	921	1.258
		OP-MPZC030	MT	114X4224	E	1 1/2	C6	3.000	1.1	1x406	27	645	971	1.367	1.832
											32	561	860	1.223	1.649
											38	465	734	1.056	1.433
											43	389	632	921	1.258
OP-MPHC034	GS	114X4228	G	1 5/8	D6	2.600	2.2	1x406	27				2.510		
									32				2.304		
									38				2.027		
									43				1.827		
OP-MPZC048	MT	114X4232	G	2	D6	2.600	2.2	1x406	27	1.389	1.948	2.604	3.358		
									32	1.175	1.698	2.309	3.008		
									38	934	1.412	1.966	2.600		
									43	746	1.185	1.692	2.269		
OP-MPZC048	MT	114X4240	E	2	D6	2.600	2.2	1x406	27	1.389	1.948	2.604	3.358		
									32	1.175	1.698	2.309	3.008		
									38	934	1.412	1.966	2.600		
									43	746	1.185	1.692	2.269		
OP-MPZC060	MT	114X4248	G	3	D6	2.600	2.2	1x406	27	1.963	2.641	3.426	4.307		
									32	1.727	2.360	3.086	3.898		
									38	1.446	2.025	2.679	3.407		
									43	1.211	1.745	2.341	2.998		
OP-MPZC060	MT	114X4256	E	3	D6	2.600	2.2	1x406	27	1.963	2.641	3.426	4.307		
									32	1.727	2.360	3.086	3.898		
									38	1.446	2.025	2.679	3.407		
									43	1.211	1.745	2.341	2.998		
OP-MPZC086	MT	114X4364	E	4 1/4	F6	6.100	3.4	1x609	27	2.753	3.745	4.937	6.331		
									32	2.401	3.316	4.411	5.691		
									38	2.010	2.830	3.809	4.954		
									43	1.705	2.448	3.330	4.360		
OP-MPZC108	MT	114X4372	E	5 1/4	F6	6.100	3.4	1x609	27	3.441	4.615	6.018	7.656		
									32	3.008	4.102	5.398	6.905		
									38	2.506	3.499	4.667	6.019		
									43	2.102	3.008	4.067	5.290		
OP-MPZC136	MT	114X4380	E	7	G6	5.100	5.2	1x609	27	4.692	6.175	7.897	9.855		
									32	4.153	5.537	7.131	8.942		
									38	3.537	4.796	6.236	7.864		
									43	3.043	4.196	5.505	6.975		
OP-MPZC171	MT	114X4488	E	8 1/2	J6	12.200	6.9	2x609	27	5.238	7.183	9.519	12.246		
									32	4.641	6.464	8.629	11.145		
									38	3.895	5.576	7.542	9.807		
									43	3.243	4.811	6.616	8.679		
OP-MPZC215	MT	114X4496	E	10	J6	12.200	6.9	2x609	27	7.078	9.390	12.129	15.303		
									32	6.221	8.350	10.869	13.785		
									38	5.280	7.183	9.436	12.040		
									43	4.561	6.274	8.295	10.640		

Test condition
EN 13215
Subcooling within the limits of the condensing unit

Superheat 10K

Electrical code


E Compressor 400 V/3 phase/50 Hz, fan 230 V/1 phase/50 Hz
G Compressor 230 V/1 phase/50 Hz, fan 230 V/1 phase/50 Hz

= Superheat 15K

Capacity in [W] at ambient temperature [°C]					Receiver volume [L]	Dimensions [mm]				Connection		Weight Gross/Net [kg]	Sound power level dB(A)	Sound pressure level 10 m dB(A)	Compressor
-10°C	-5°C	0°C	5°C	10°C		Housing	Height H	Width W	Depth D	Suction line	Liquid line				
961	1.177	1.425	1.703		1.2	1	652	906	430	¾	¾	96/64	61	30	SC10MLX
879	1.079	1.308	1.566												
780	960	1.167	1.401												
697	861	1.049													
1.580	1.907	2.277	2.691		1.2	1	652	906	430	¾	¾	96/64	61	30	SC18MLX
1.447	1.753	2.100	2.489												
1.287	1.565	1.882	2.240												
1.152	1.406	1.697													
2.365	2.958	3.605	4.299	5.033	4.2	2	760	1.053	480	¾	¾	116/83	72	41	MTZ18
2.135	2.677	3.270	3.908	4.585											
1.863	2.346	2.874	3.445	4.053											
1.642	2.073	2.548													
2.365	2.958	3.605	4.299	5.033	4.2	2	760	1.053	480	¾	¾	116/83	72	41	MTZ18
2.135	2.677	3.270	3.908	4.585											
1.863	2.346	2.874	3.445	4.053											
1.642	2.073	2.548													
3.035	3.627	4.286	5.012		4.2	2	760	1.053	480	¾	¾	114/82	67	36	GS34MLX
2.794	3.345	3.957	4.630												
2.465	2.953	3.491	4.081												
2.234	2.687	3.190	3.742												
4.209	5.149	6.176	7.282	8.459	4.2	2	760	1.053	480	¾	¾	120/86	71	39	MTZ28
3.798	4.672	5.625	6.654	7.751											
3.315	4.106	4.972	7.751	6.910											
2.920	3.644	4.436													
4.209	5.149	6.176	7.282	8.459	4.2	2	760	1.053	480	¾	¾	120/86	71	39	MTZ28
3.798	4.672	5.625	6.654	7.751											
3.315	4.106	4.972	7.751	6.910											
2.920	3.644	4.436													
5.275	6.318	7.422	8.572	9.755	4.2	2	760	1.053	480	¾	¾	125/88	72	40	MTZ36
4.785	5.740	6.749	7.800	8.884											
4.198	5.046	5.942	6.877	7.846											
3.708	4.470	5.272													
5.275	6.318	7.422	8.572	9.755	4.2	2	760	1.053	480	¾	¾	125/88	72	40	MTZ36
4.785	5.740	6.749	7.800	8.884											
4.198	5.046	5.942	6.877	7.846											
3.708	4.470	5.272													
7.929	9.718	11.691	13.836	16.138	7.0	3	975	1.406	550	7/8	¾	163/117	74	42	MTZ51
7.158	8.814	10.639	12.626	14.767											
6.267	7.753	9.398	11.201	13.146											
5.544	6.884	8.834													
9.517	11.596	13.877	16.339	18.961	7.0	3	975	1.406	550	7/8	¾	163/117	74	42	MTZ65
8.626	10.545	12.654	14.937	17.376											
7.565	9.291	11.192	13.262	15.484											
6.686	8.251	9.984													
12.031	14.413	16.977	19.701	22.559	7.0	3	975	1.406	550	1 1/8	¾	168/122	76	45	MTZ81
10.951	13.146	15.516	18.037	20.691											
9.667	11.641	13.775	16.054	18.466											
8.610	10.400	12.337													
15.355	18.838	22.650	26.772	31.667	14.0	4	1.794	1.420	650	1 3/8	¾	327/271	78	47	MTZ100
14.003	17.024	20.709	24.499	28.553											
12.371	15.235	18.374	21.782	25.426											
11.000	13.584	16.434													
18.887	22.862	27.204	31.875	36.834	14.0	4	1.794	1.420	650	1 3/8	¾	329/275	78	47	MTZ125
17.095	20.773	24.790	29.126	33.744											
15.010	18.316	21.944	25.878	30.088											
13.322	16.314	19.622													

Sound measurement done in accordance with ISO 3743-1 and ISO 3744.
MBP measured according to EN 13215 @ -10°C suction, +32°C ambient, SH 10 K
LBP measured according to EN 13215 @ -25°C suction, +32°C ambient, SH 10 K

OPTYMA PLUS™ R134a MBP

	Test conditions	Unit	Platform	Code number	Electrical code	HP	Condenser coil			Condenser fan	Ambient °C	Capacity evaporating te				
							Type	Airflow [m³/h]	Int. volume [L]	Fan blade Ø [mm]		-15	-10	-5	0	
	SH 10K	OP-MPZC030	MT	114X4216	G	1 ½	C6	3.000	1.1	1×406	27	996	1.425	1.885	2.403	
											32	919	1.285	1.712	2.199	
											38	778	1.119	1.513	1.961	
											43	677	993	1.356	1.768	
		OP-MPZC030	MT	114X4224	E	1 ½	C6	3.000	1.1	1×406	1×406	27	996	1.425	1.885	2.403
												32	919	1.285	1.712	2.199
												38	778	1.119	1.513	1.961
												43	677	993	1.356	1.768
		OP-MPGC034	GS	114X4112	G	1 ⅝	A6	1.500	1.6	1×356	1×356	27	1.347	1.677	2.059	2.493
												32	1.255	1.568	1.930	2.344
												38	1.143	1.436	1.775	2.163
												43	1.048	1.325	1.645	2.011
OP-MPZC048	MT	114X4232	G	2	D6	2.600	2.2	1×406	1×406	27	1.615	2.214	2.974	3.738		
										32	1.518	2.044	2.692	3.469		
										38	1.348	1.835	2.433	3.149		
										43	1.226	1.675	2.225	2.886		
OP-MPZC048	MT	114X4240	E	2	D6	2.600	2.2	1×406	1×406	27	1.615	2.214	2.974	3.738		
										32	1.518	2.044	2.692	3.469		
										38	1.348	1.835	2.433	3.149		
										43	1.226	1.675	2.225	2.886		
OP-MPZC060	MT	114X4248	G	3	D6	2.600	2.2	1×406	1×406	27	2.597	3.278	4.125	5.097		
										32	2.364	3.053	3.858	4.778		
										38	2.138	2.783	3.530	4.385		
										43	1.954	2.558	3.255	4.049		
OP-MPZC060	MT	114X4256	E	3	D6	2.600	2.2	1×406	1×406	27	2.597	3.278	4.125	5.097		
										32	2.364	3.053	3.858	4.778		
										38	2.138	2.783	3.530	4.385		
										43	1.954	2.558	3.255	4.049		
OP-MPZC086	MT	114X4364	E	4 ¼	F6	6.100	3.4	1×609	1×609	27	3.201	4.411	5.908	7.423		
										32	3.021	4.077	5.340	6.822		
										38	2.637	3.612	4.776	6.145		
										43	2.334	3.248	4.335	5.611		
OP-MPZC108	MT	114X4372	E	5 ½	F6	6.100	3.4	1×609	1×609	27	3.662	5.216	6.858	8.792		
										32	3.411	4.754	6.337	8.165		
										38	2.982	4.243	5.723	7.426		
										43	2.632	3.827	5.220	6.822		
OP-MPZC136	MT	114X4380	E	7	G6	5.100	5.2	1×609	1×609	27	5.347	7.201	8.998	11.305		
										32	4.923	6.509	8.386	10.570		
										38	4.402	5.889	7.642	9.677		
										43	3.967	5.370	7.018	8.930		
OP-MPZC171	MT	114X4488	E	8 ½	J6	12.200	6.9	2×609	2×609	27	6.228	8.486	11.253	14.151		
										32	5.900	7.908	10.315	13.150		
										38	5.180	7.066	9.318	11.961		
										43	4.646	6.414	8.521	10.990		
OP-MPZC215	MT	114X4496	E	10	J6	12.200	6.9	2×609	2×609	27	7.987	10.774	13.704	17.156		
										32	7.406	9.805	12.641	15.930		
										38	6.458	8.721	11.382	14.458		
										43	5.721	7.855	10.352	13.234		

Test condition
EN 13215

Superheat 10K

Subcooling within the limits of the condensing unit

Electrical code


E Compressor 400 V/3 phase/50 Hz, fan 230 V/1 phase/50 Hz

G Compressor 230 V/1 phase/50 Hz, fan 230 V/1 phase/50 Hz

in [W] at mperature [°C]				Receiver volume [L]	Housing	Dimensions [mm]				Connection		Sound power level dB(A)	Sound pressure level 10 m dB(A)	Compressor
5	10	15	20			Height H	Width W	Depth D	Suction line	Liquid line	Gross/Net [kg]			
2.987	3.632	4.334	5.087	4.2	2	760	1.053	480	5/8	3/8	116/83	72	41	MTZ18
2.747	3.350	4.006	4.708											
2.462	3.013	3.610	4.249											
2.226	2.732													
2.987	3.632	4.334	5.087	4.2	2	760	1.053	480	5/8	3/8	116/83	72	41	MTZ18
2.747	3.350	4.006	4.708											
2.462	3.013	3.610	4.249											
2.226	2.732													
2.984				1.2	1	652	906	430	1/2	3/8	102/76	63	32	GS34MFX
2.811														
2.603														
2.427														
4.704	5.808	7.048	8.413	4.2	2	760	1.053	480	5/8	3/8	120/86	71	39	MTZ28
4.379	5.419	6.587	7.872											
3.988	4.947	6.023	7.210											
3.660	4.549													
4.704	5.808	7.048	8.413	4.2	2	760	1.053	480	5/8	3/8	120/86	71	39	MTZ28
4.379	5.419	6.587	7.872											
3.988	4.947	6.023	7.210											
3.660	4.549													
6.195	7.410	8.735	10.158	4.2	2	760	1.053	480	3/4	3/8	125/88	72	40	MTZ36
5.814	6.958	8.203	9.540											
5.342	6.398	7.546	8.777											
4.937	5.917													
6.195	7.410	8.735	10.158	4.2	2	760	1.053	480	3/4	3/8	125/88	72	40	MTZ36
5.814	6.958	8.203	9.540											
5.342	6.398	7.546	8.777											
4.937	5.917													
9.242	11.293	13.571	16.072	7.0	3	975	1.406	550	7/8	5/8	163/117	74	42	MTZ51
8.528	10.466	12.621	14.993											
7.723	9.520	11.528	13.747											
7.086	8.770													
10.975	13.406	16.068	18.942	7.0	3	975	1.406	550	7/8	5/8	163/117	74	42	MTZ65
10.235	12.535	15.057	17.783											
9.356	11.501	13.855	16.403											
8.635	10.650													
13.930	16.871	20.108	23.625	7.0	3	975	1.406	550	1 1/8	5/8	168/122	76	45	MTZ81
13.055	15.840	18.909	22.247											
11.993	14.592	17.462	20.588											
11.105	13.546													
17.602	21.539	25.945	30.821	14.0	4	1.794	1.420	650	1 3/8	5/8	327/271	78	47	MTZ100
16.426	20.159	24.338	28.958											
15.015	18.492	22.385	26.685											
13.843	17.097													
21.113	25.554	30.479	35.854	14.0	4	1.794	1.420	650	1 3/8	3/4	329/275	78	47	MTZ125
19.688	23.902	28.568	33.662											
17.965	21.893	26.233	30.972											
16.518	20.194													

Sound measurement done in accordance with ISO 3743-1 and ISO 3744.
MBP measured according to EN 13215 @ -10°C suction, +32°C ambient, SH 10 K
LBP measured according to EN 13215 @ -25°C suction, +32°C ambient, SH 10 K

OPTYMA PLUS™ R407C MBP

	Test conditions	Unit	Platform	Code number	Electrical code	HP	Condenser coil			Condenser fan	Ambient °C	Capacity in [W] at evaporating temperature			
							Type	Airflow [m³/h]	Int. volume [L]	Fan blade Ø [mm]		-15	-10	-5	0
	SH 10K	OP-MPZC030	MT	114X4216	G	1 ½	C6	3.000	1.1	1×406	27	1.479	1.999	2.585	3.232
											32	1.308	1.798	2.351	2.960
											38		1.570	2.083	2.645
											43			1.869	2.393
		OP-MPZC030	MT	114X4224	E	1 ½	C6	3.000	1.1	1×406	27	1.479	1.999	2.585	3.232
											32	1.308	1.798	2.351	2.960
											38		1.570	2.083	2.645
											43			1.869	2.393
		OP-MPZC048	MT	114X4232	G	2	D6	2.600	2.2	1×406	27	2.534	3.402	4.370	5.425
											32	2.289	3.112	4.023	5.009
											38		2.756	3.603	4.510
											43			3.250	4.093
OP-MPZC048	MT	114X4240	E	2	D6	2.600	2.2	1×406	27	2.534	3.402	4.370	5.425		
									32	2.289	3.112	4.023	5.009		
									38		2.756	3.603	4.510		
									43			3.250	4.093		
OP-MPZC060	MT	114X4248	G	3	D6	2.600	2.2	1×406	27	3.398	4.375	5.452	6.609		
									32	3.058	3.986	5.001	6.087		
									38		3.508	4.450	5.453		
									43			3.983	4.916		
OP-MPZC060	MT	114X4256	E	3	D6	2.600	2.2	1×406	27	3.398	4.375	5.452	6.609		
									32	3.058	3.986	5.001	6.087		
									38		3.508	4.450	5.453		
									43			3.983	4.916		
OP-MPZC086	MT	114X4364	E	4 ¼	F6	6.100	3.4	1×609	27	5.117	6.471	8.158	10.045		
									32	4.544	5.927	7.508	9.274		
									38		5.275	6.730	8.353		
									43			6.084	7.590		
OP-MPZC108	MT	114X4372	E	5 ½	F6	6.100	3.4	1×609	27	6.256	7.978	9.935	12.118		
									32	5.701	7.315	9.149	11.194		
									38		6.541	8.223	10.098		
									43			7.470	9.201		
OP-MPZC136	MT	114X4380	E	7	G6	5.100	5.2	1×609	27	7.933	10.125	12.575	15.249		
									32	7.271	9.344	11.647	14.152		
									38		8.402	10.525	12.824		
									43			9.590	11.715		
OP-MPZC171	MT	114X4488	E	8 ½	J6	12.200	6.9	2×609	27	9.705	12.536	15.963	19.809		
									32	8.627	11.436	14.657	18.263		
									38		10.128	13.095	16.414		
									43			11.806	14.885		
OP-MPZC215	MT	114X4496	E	10	J6	12.200	6.9	2×609	27	12.921	16.388	20.274	24.561		
									32	11.790	15.068	18.726	22.747		
									38		13.472	16.854	20.558		
									43			15.294	18.732		

Test condition
EN 13215

Superheat 10K

Electrical code

Subcooling within the limits of the condensing unit

E Compressor 400 V/3 phase/50 Hz, fan 230 V/1 phase/50 Hz
G Compressor 230 V/1 phase/50 Hz, fan 230 V/1 phase/50 Hz

[°C]		Receiver volume [L]	Housing	Dimensions [mm]				Connection		Sound power level dB(A)	Sound pressure level 10 m dB(A)	Compressor
5	10			Height H	Width W	Depth D	Suction line	Liquid line	Gross/Net [kg]			
3.933	4.678	4.2	2	760	1.053	480	5/8	3/8	116/83	72	41	MTZ18
3.618	4.318											
3.252	3.896											
3.933	4.678	4.2	2	760	1.053	480	5/8	3/8	116/83	72	41	MTZ18
3.618	4.318											
3.252	3.896											
6.547	7.719	4.2	2	760	1.053	480	5/8	3/8	120/86	71	39	MTZ28
6.055	7.144											
5.467	6.459											
6.547	7.719	4.2	2	760	1.053	480	5/8	3/8	120/86	71	39	MTZ28
6.055	7.144											
5.467	6.459											
7.828	9.089	4.2	2	760	1.053	480	3/4	3/8	125/88	72	40	MTZ36
7.227	8.404											
6.500	7.576											
7.828	9.089	4.2	2	760	1.053	480	3/4	3/8	125/88	72	40	MTZ36
7.227	8.404											
6.500	7.576											
12.125	14.376	7.0	3	975	1.406	550	7/8	5/8	163/117	74	42	MTZ51
11.218	13.325											
10.135	12.069											
14.506	17.073	7.0	3	975	1.406	550	7/8	5/8	163/117	74	42	MTZ65
13.433	15.842											
12.155	14.371											
18.114	21.130	7.0	3	975	1.406	550	1 1/8	5/8	168/122	76	45	MTZ81
16.827	19.636											
15.270	17.833											
24.053	28.657	14.0	4	1.794	1.420	650	1 3/8	5/8	327/271	78	47	MTZ100
22.243	26.562											
20.071	24.044											
29.198	34.150	14.0	4	1.794	1.420	650	1 3/8	3/4	329/275	78	47	MTZ125
27.095	31.725											
24.554	28.806											

Sound measurement done in accordance with ISO 3743-1 and ISO 3744.
MBP measured according to EN 13215 @ -10°C suction, +32°C ambient, SH 10 K
LBP measured according to EN 13215 @ -25°C suction, +32°C ambient, SH 10 K

LBP – R404A/R507

Electrical characteristics – 230 V, 1 phase

Unit	LRA Compressor [A]	MCC Compressor [A]	Max. continuous power consumption [kW]	Contactor	Code number 230 V 50 Hz	Main switch	Code number	MCC fan [A]	Fan power [W]
OP-LPHC018	23.5	6	0.97	CI 9	037H0021	CTI25M	047B3149	0.32	1×25
OP-LPHC026	25.7	5.7	1.37						
OP-LPHC048	37	11	2.19	CI 12	037H0031	CTI25MB	047B3157	0.63	1×75
OP-LPHC068	53	17	3.30	CI 15	037H0049				

Electrical characteristics – 400 V, 3 phase

Unit	LRA Compressor [A]	MCC Compressor [A]	Max. continuous power consumption [kW]	Contactor	Code number 230 V 50 Hz	Main switch	Code number	MCC fan [A]	Fan power [W]
OP-LPHC048	16	4.8	2.19	CI 6	037H0015	CTI25M	047B3147	0.63	1×75
OP-LPHC068	25	8.4	3.30	CI 9	037H0021		047B3149		
OP-LPHC096	32	10.1	4.21	CI 12	037H0031	CTI25MB	047B3157	1.1	1×130
OP-LPHC136	51	14.3	6.37				047B3159		
OP-LPHC271	96	27	11.99	CI 30	037H0055		047B3159	2×1.1	2×130

Automatic controls

Unit	Filter drier		Sight glass		Pressure switch		Suction valve		Liquid valve		Fan Speed controller	
OP-LPHC018	DML82.5s	023Z4568	SGN10s	014-0182	KP17 WB	060-5397	GBC12s	009G7052	GBC10s	009G7051	RGE-Z1L4-7DS or XGE-4CB1	061H3045 or 061H3142
OP-LPHC026							GBC16s	009G7053				
OP-LPHC048							GBC22s	009G7055				
OP-LPHC068							GBC28s	009G7056				
OP-LPHC096	DML162.5s	023Z4576	SGN12s	014-0183	GBC35s	009G7057	GBC12s	009G7052	GBC18s	009G7054		
OP-LPHC136	DML164s	023Z4580					GBC12s	009G7052				
OP-LPHC271	DML166s	023Z4582					GBC18s	009G7054				

Spare parts

Unit	Platform	Receiver volume [L]		Fan Motor (capacitor included)		Fan Blade		Fan Grill		Fan capacitor		Handling handle
OP-LPHC018	SC	1.2	118U0003	Fan motor 25 W	118U0016	Blade Ø14"	118U0017	Grill H1	118U0018	1.8 µF	118U0019	118U0013
OP-LPHC026	GS							Grill H2	118U0011			
OP-LPHC048	NT	4.2	118U0004	Fan motor 75 W	118U0007	Blade Ø16"	118U0009	Grill H3	118U0012	3.5 µF	118U0014	
OP-LPHC068	NT							Grill H4	118U0012			
OP-LPHC096	NT	7.0	118U0005	Fan motor 130 W	118U0008	Blade Ø24"	118U0010	Grill H3	118U0012	6.0 µF	118U0015	
OP-LPHC136	NT							Grill H4	118U0012			
OP-LPHC271	NT	14.0	118U0006									

Note:

LRA (Locked Rotor Amps)

MCC (Maximum Continuous Current)

MBP – R404A/R507

Electrical characteristics – 230 V, 1 phase

Unit	LRA Compressor [A]	MCC Compressor [A]	Max. continuous power consumption [kW]	Contactora	Code number 230 V 50 Hz	Main switch	Code number	MCC fan [A]	Fan power [W]
OP-MPHC010	18.4	4.5	0.65	CI 6	037H0015	CTI25M	047B3148	0.32	1×25
OP-MPHC018	23.4	6	1.13	CI 9	037H0021		047B3149		
OP-MPZC030	40	10	1.82						
OP-MPHC034	45.7	12.6	2.58	CI15	037H0049	CTI25MB	047B3157	0.63	1×75
OP-MPZC048	51	20	3.07	CI 16	037H0049		047B3158		
OP-MPZC060	60	22	4.20	CI 20	037H0045				

Electrical characteristics – 400 V, 3 phase

Unit	LRA Compressor [A]	MCC Compressor [A]	Max. continuous power consumption [kW]	Contactora	Code number 230 V 50 Hz	Main switch	Code number	MCC fan [A]	Fan power [W]
OP-MPZC030	20	5	1.82	CI 6	037H0015	CTI25M	047B3147	0.63	1×75
OP-MPZC048	23	7.5	3.07	CI 9	037H0021		047B3148		
OP-MPZC060	30	8.5	4.20						
OP-MPZC086	48.5	11.5	4.72	CI 12	037H0031	CTI25MB	047B3157	1.1	1×130
OP-MPZC108	64	14	6.60	CI 16	037H0041		047B3158		
OP-MPZC136	80	19	8.78						
OP-MPZC171	90	22	9.66	CI 25	037H0051		047B3159	2×1.1	2×130
OP-MPZC215	105	27	13.10	CI 30	037H0055				

Automatic controls

Unit	Filter drier		Sight glass		Pressure switch		Suction valve		Liquid valve		Fan Speed controller	
OP-MPHC010	DML082.5s	023Z4568	SGN10s	014-0182	KP17 WB	060-5397	GBC10s	009G7051	GBC10s	009G7051	RGE-Z1L4-7DS or XGE-4CB1	061H3045 or 061H3142
OP-MPHC018												
OP-MPZC030												
OP-MPHC034												
OP-MPZC048												
OP-MPZC060	DML083s	023Z4570	SGN16s	014-0184	GBC16s	009G7053	GBC18s	009G7054				
OP-MPZC086												
OP-MPZC108	DML165s	023Z4581					GBC22s	009G7055	GBC16s	009G7053		
OP-MPZC136							GBC28s	009G7056				
OP-MPZC171							GBC35s	009G7057			GBC18s	009G7054
OP-MPZC215	DML166s	023Z4582	SGN19s	014-0185								

Spare parts

Unit	Receiver volume [L]		Fan Motor (capacitor included)		Fan Blade		Fan Grill		Fan capacitor		Handling handle
OP-MPHC010	1.2	118U0003	Fan motor 25 W	118U0016	Blade Ø14"	118U0017	Grill H1	118U0018	1.8 µF	118U0019	118U0013
OP-MPHC018											
OP-MPZC030	4.2	118U0004	Fan motor 75 W	118U0007	Blade Ø16"	118U0009	Grill H2	118U0011	3.5 µF	118U0014	
OP-MPHC034											
OP-MPZC048											
OP-MPZC060											
OP-MPZC086	7.0	118U0005	Fan motor 130 W	118U0008	Blade Ø24"	118U0010	Grill H3	118U0012	6.0 µF	118U0015	
OP-MPZC108											
OP-MPZC136											
OP-MPZC171											
OP-MPZC215	14.0	118U0006					Grill H4				

MBP – R134a

Electrical characteristics – 230 V, 1 phase

Unit	LRA Compressor [A]	MCC Compressor [A]	Max. continuous power consumption [kW]	Contactora	Code number 230 V 50 Hz	Main switch	Code number	MCC fan [A]	Fan power [W]
OP-MPZC030	40	10	1.82	CI 9	037H0021	CTI25M	047B3149	0.63	1x75
OP-MPGC034	25.7	6.8	1.48					0.32	1x25
OP-MPZC048	51	20	3.07	CI 15	037H0049	CTI25MB	047B3157	0.63	1x75
OP-MPZC060	60	22	4.20	CI 20	037H0045				

Electrical characteristics – 400 V, 3 phase

Unit	LRA Compressor [A]	MCC Compressor [A]	Max. continuous power consumption [kW]	Contactora	Code number 230 V 50 Hz	Main switch	Code number	MCC fan [A]	Fan power [W]		
OP-MPZC030	20	5	1.82	CI 6	037H0015	CTI25M	047B3147	0.63	1x75		
OP-MPZC048	23	7.5	3.07	CI 9	037H0021					047B3148	
OP-MPZC060	30	8.5	4.20							CI 12	037H0031
OP-MPZC086	48.5	11.5	4.72	CI 16	037H0041	CTI25MB	047B3158	1.1	1x130		
OP-MPZC108	64	14	6.60								
OP-MPZC136	80	19	8.78								
OP-MPZC171	90	22	9.66							CI25	037H0051
OP-MPZC215	105	27	13.10							CI30	037H0055

Automatic controls

Unit	Filter drier		Sight glass		Pressure switch		Suction valve		Liquid valve		Fan Speed controller	
OP-MPZC030	DML082,5s	023Z4568	SGN10s	014-0182	KP17 WB	060-5397	GBC16s	009G7053	GBC10s	009G7051	RGE-Z1L4-7DS or XGE-4CB1	061H3045 or 061H3142
OP-MPGC034							GBC12s	009G7052				
OP-MPZC048							GBC16s	009G7053				
OP-MPZC060	DML083s	023Z4570	GBC18s	009G7054								
OP-MPZC086	DML165s	023Z4581	SGN16s	014-0184			GBC22s	009G7055	GBC16s	009G7053		
OP-MPZC108							GBC28s	009G7056				
OP-MPZC136							GBC35s	009G7057	GBC18s	009G7054		
OP-MPZC171												
OP-MPZC215	DML166s	023Z4582	SGN19s	014-0185								

Spare parts

Unit	Receiver volume [L]		Fan Motor (capacitor included)		Fan Blade		Fan Grill		Fan capacitor		Handling handle
OP-MPZC030	4.2	118U0004	Fan motor 75 W	118U0007	Blade Ø16"	118U0009	Grill H2	118U0011	3.5 µF	118U0014	118U0013
OP-MPGC034	1.2	118U0003	Fan motor 25 W	118U0016	Blade Ø14"	118U0017	Grill H1	118U0018	1.8 µF	118U0018	
OP-MPZC048	4.2	118U0004	Fan motor 75 W	118U0007	Blade Ø16"	118U0009	Grill H2	118U0011	3.5 µF	118U0014	
OP-MPZC060											
OP-MPZC086	7.0	118U0005	Fan motor 130 W	118U0008	Blade Ø24"	118U0010	Grill H3	118U0012	6.0 µF	118U0015	
OP-MPZC108											
OP-MPZC136											
OP-MPZC171											
OP-MPZC215	14.0	118U0006					Grill H4				

Note:

LRA (Locked Rotor Amps)
MCC (Maximum Continuous Current)

MBP – R407C

Electrical characteristics – 230 V, 1 phase

Unit	LRA Compressor [A]	MCC Compressor [A]	Max. continuous power consumption [kW]	Contactora	Code number 230 V 50 Hz	Main switch	Code number	MCC fan [A]	Fan power [W]
OP-MPZC030	40	10	1.82	CI 9	037H0021	CTI25M	047B3149	0.63	1×75
OP-MPZC048	51	20	3.07	CI 16	037H0049	CTI25MB	047B3157		
OP-MPZC060	60	22	4.20	CI 20	037H0045		047B3158		

Electrical characteristics – 400 V, 3 phase

Unit	LRA Compressor [A]	MCC Compressor [A]	Max. continuous power consumption [kW]	Contactora	Code number 230 V 50 Hz	Main switch	Code number	MCC fan [A]	Fan power [W]	
OP-MPZC030	20	5	1.82	CI 6	037H0015	CTI25M	047B3147	0.63	1×75	
OP-MPZC048	23	7.5	3.07	CI 9	037H0021		047B3148			
OP-MPZC060	30	8.5	4.20			CI 12	037H0031	047B3157	1.1	1×130
OP-MPZC086	48.5	11.5	4.72							
OP-MPZC108	64	14	6.60							
OP-MPZC136	80	19	8.78	CI 16	037H0041			047B3158	2×1.1	2×130
OP-MPZC171	90	22	9.66							
OP-MPZC215	105	27	13.10	CI 30	037H0055	047B3159				

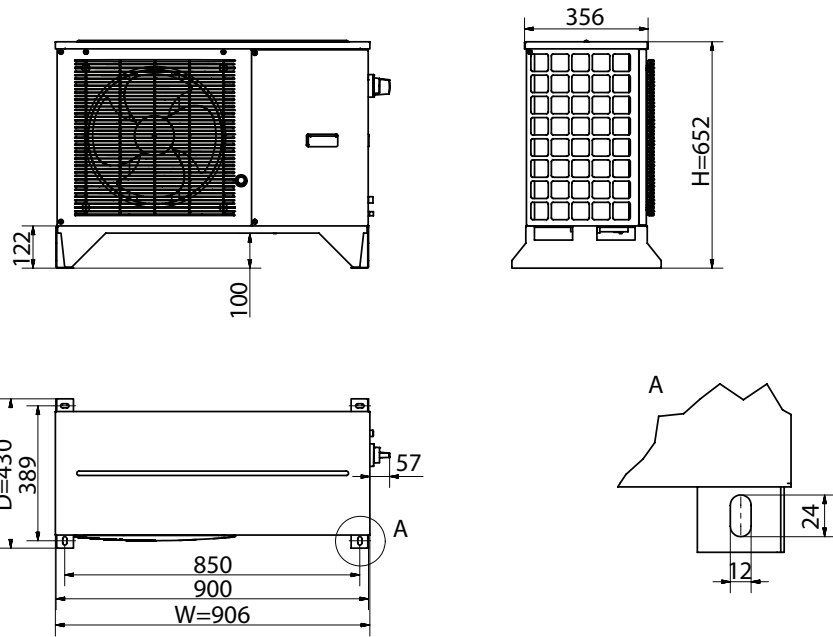
Automatic controls

Unit	Filter drier		Sight glass		Pressure switch		Suction valve		Liquid valve		Fan Speed controller	
OP-MPZC030	DML082,5s	023Z4568	SGN10s	014-0182	KP17 WB	060-5397	GBC16s	009G7053	GBC10s	009G7051	RGE-Z1L4-7DS or XGE-4CB1	061H3045 or 061H3142
OP-MPZC048							GBC18s	009G7054				
OP-MPZC060	DML083s	023Z4570	SGN16s	014-0184			GBC22s	009G7055	GBC16s	009G7053		
OP-MPZC086	DML165s	023Z4581					GBC28s	009G7056				
OP-MPZC108			GBC35s	009G7057								
OP-MPZC136			GBC18s	009G7054								
OP-MPZC171												
OP-MPZC215	DML166s	023Z4582	SGN19s	014-0185								

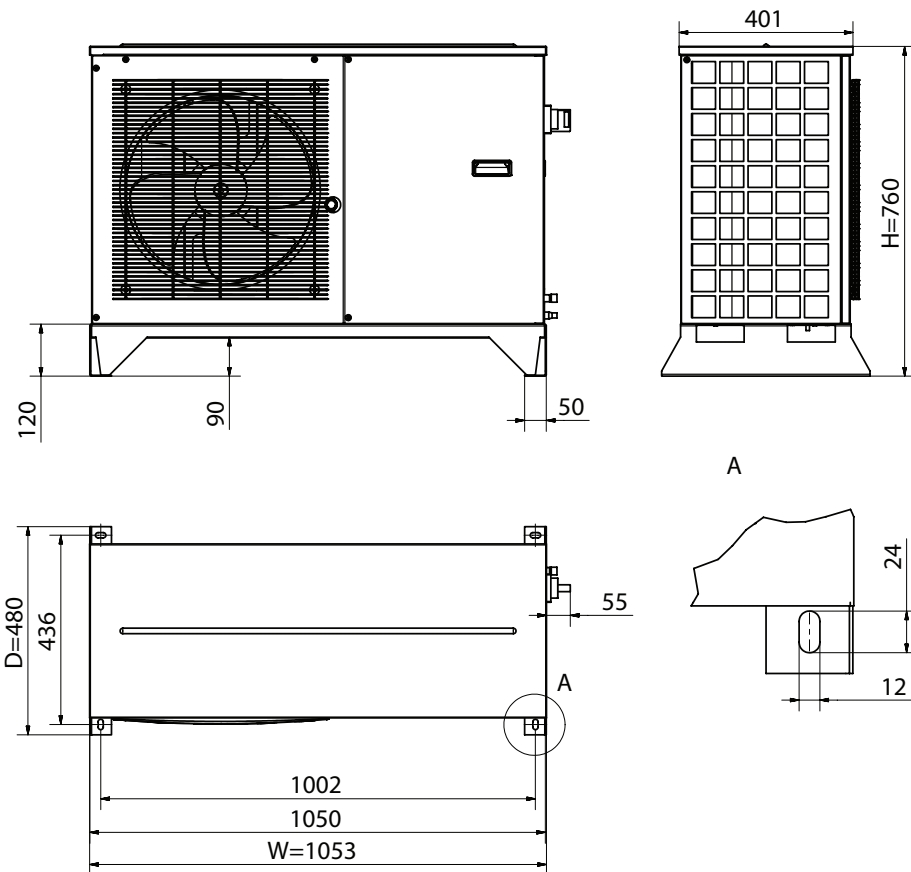
Spare parts

Unit	Receiver volume [L]		Fan Motor (capacitor included)		Fan Blade		Fan Grill		Fan capacitor		Handling handle
OP-MPZC030	4.2	118U0004	Fan motor 75 W	118U0007	Blade Ø16"	118U0009	Grill H2	118U0011	3,5 µF	118U0014	118U0013
OP-MPZC048											
OP-MPZC060											
OP-MPZC086	7.0	118U0005	Fan motor 130 W	118U0008	Blade Ø24"	118U0010	Grill H3	118U0012	6.0 µF	118U0015	
OP-MPZC108											
OP-MPZC136							14.0				
OP-MPZC171											
OP-MPZC215											

Dimensions

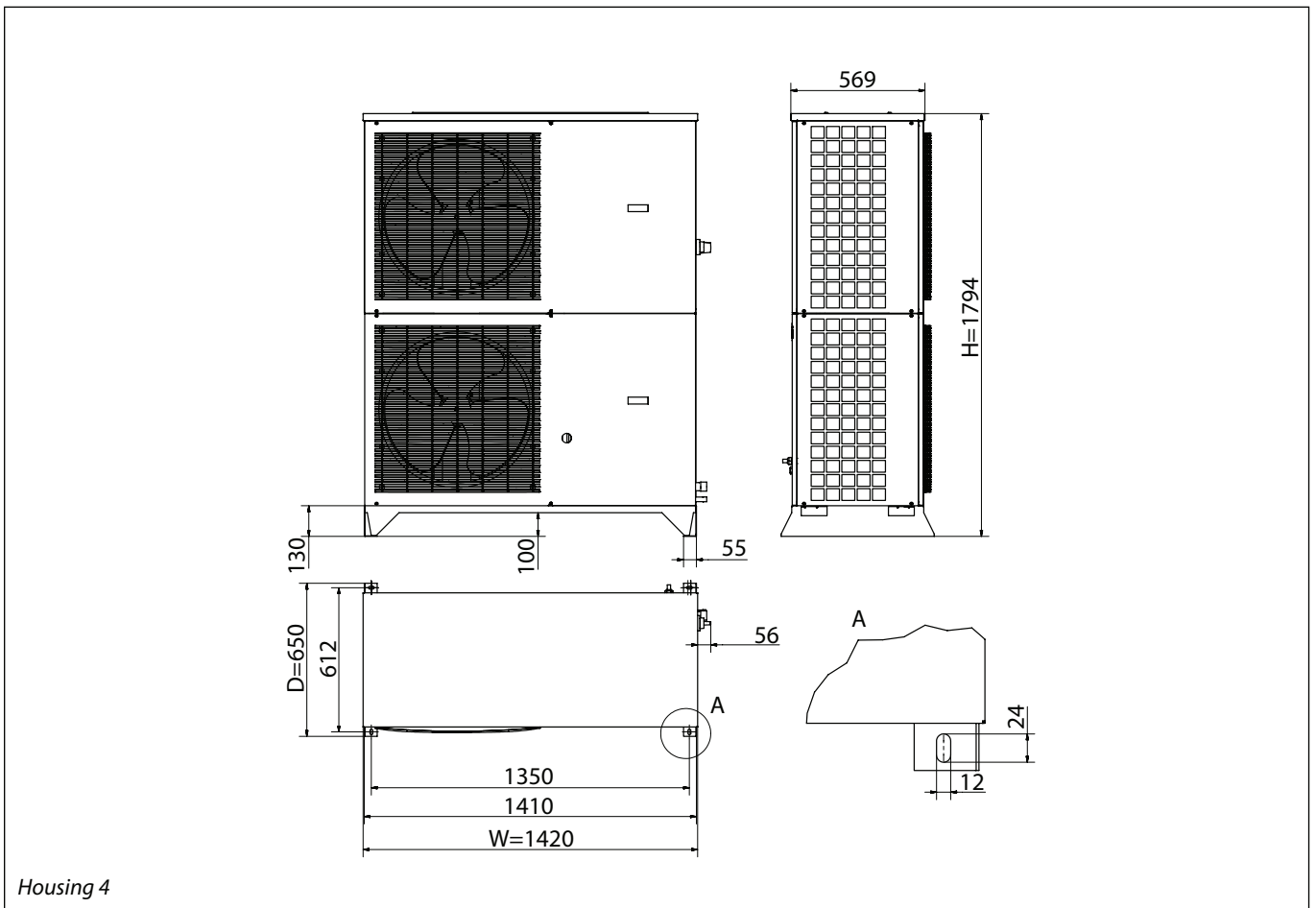
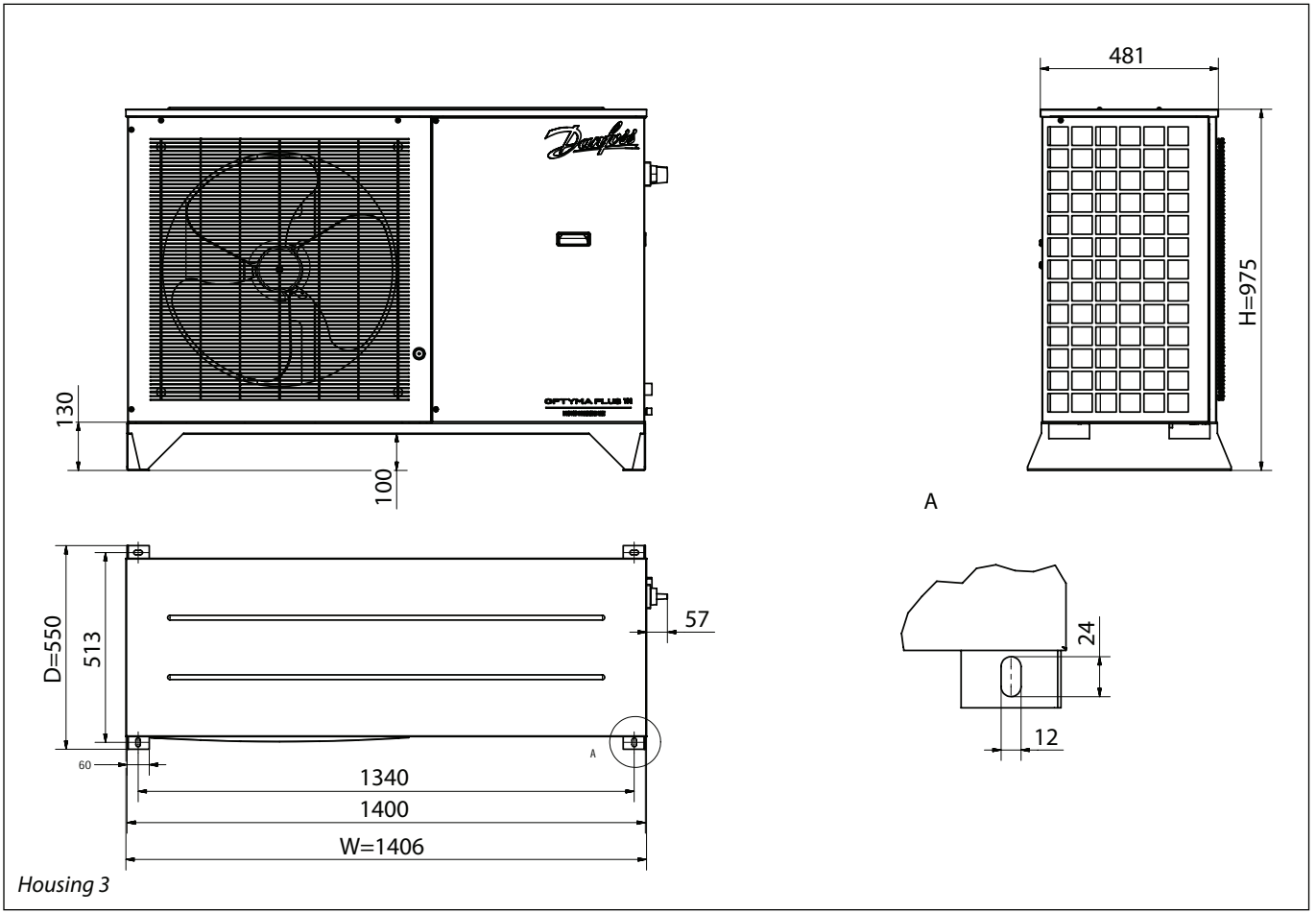


Housing 1

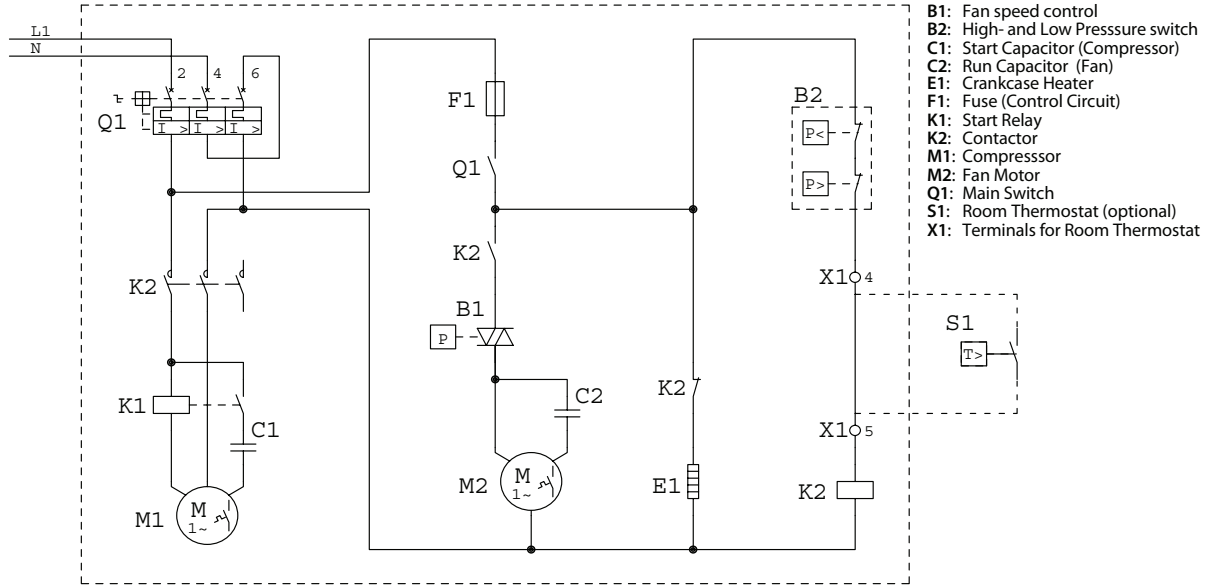


Housing 2

Dimensions

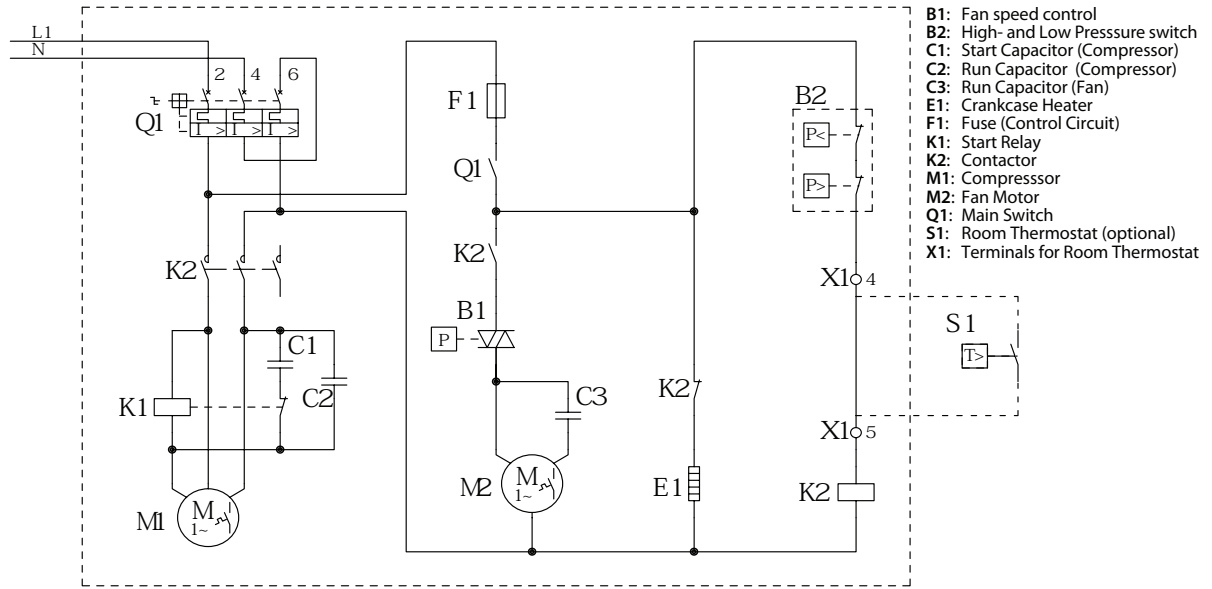


Wiring diagrams



DWG.-NO.: 118A0156_b

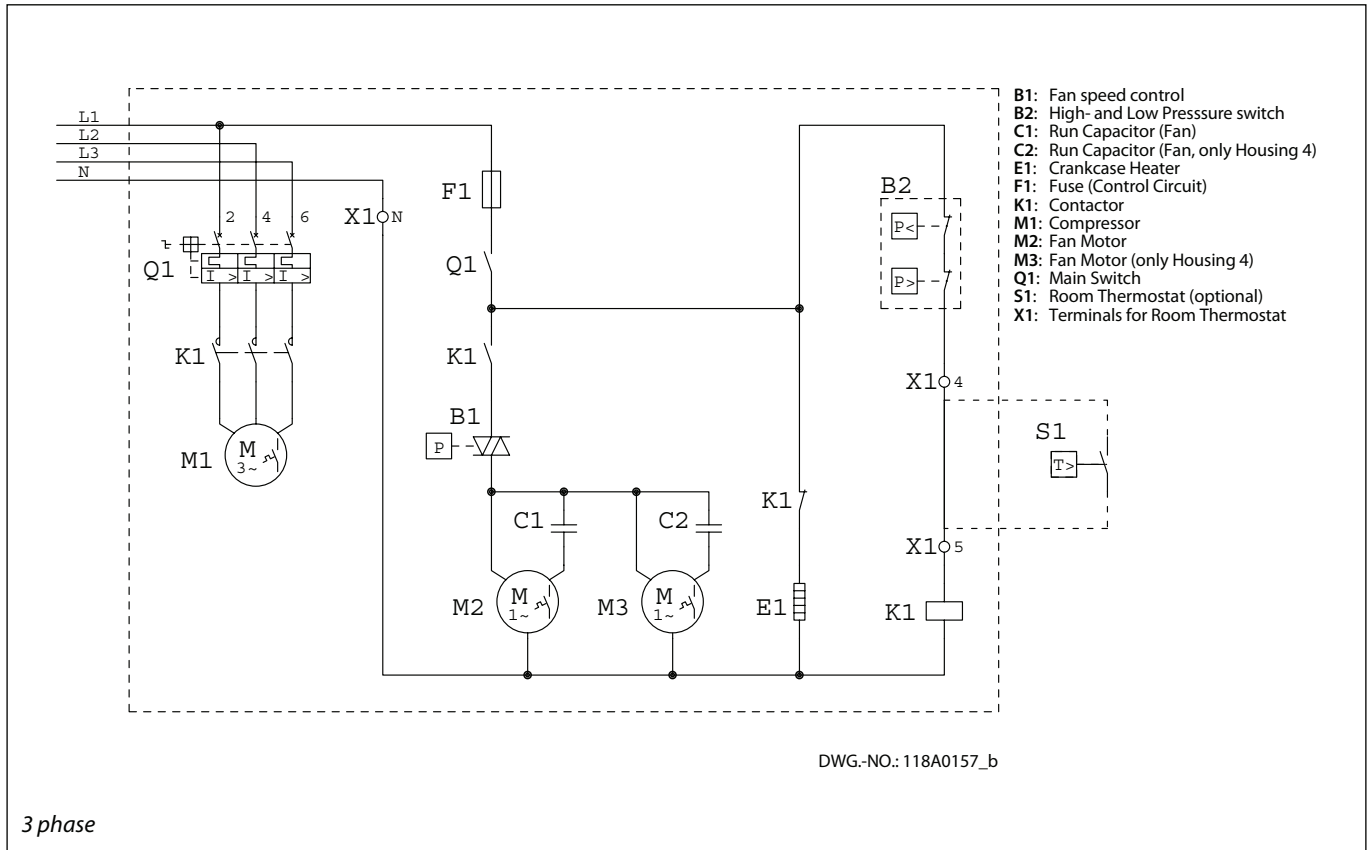
1 phase (only for OP-LPHC018 and OP-MPHC010)



DWG.-NO.: 118A0158_a

1 phase

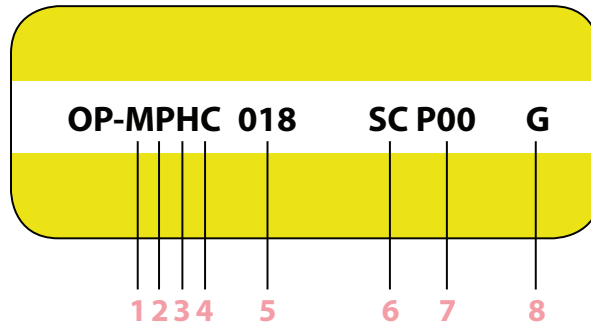
Wiring diagrams



Designation system for the OPTYMA™ PLUS programme

(additional programme frequency etc.: please contact your local wholesaler)

1. Application
2. Design
3. Refrigerant
4. Condenser option
5. Displacement
6. Compressor platform
7. Version
8. Electrical code



1	L = LBP M = MBP	5	026 = 26 cm ³ 171 = 171 cm ³
2	P = Packaged units	6	GS = GS MT = MTZ NT = NTZ SC = SC
3	Z = R404A, R134a, R507, R407C H = R404A/R507 G = R134a	7	P00
4	C = Standard	8	G = Compressor 230 V/1 phase/50 Hz, fan 230 V/1 phase/50 Hz E = Compressor 400 V/3 phase/50 Hz, fan 230 V/1 phase/50 Hz



Applications

This new condensing unit range will perfectly fit applications like:

- Cold stores and freezer rooms
- Beer and wine cellars
- Small food retail and mini markets
- Garage forecourt shops

OPTYMA PLUS™ includes also the following 7 Danfoss products:

Compressor	Pressure control	Sight glass with moisture indicator	Hermetic filter drier with solid core	Contactors	Ball valves	Fan speed control

For more detailed information please use our software RS+™3