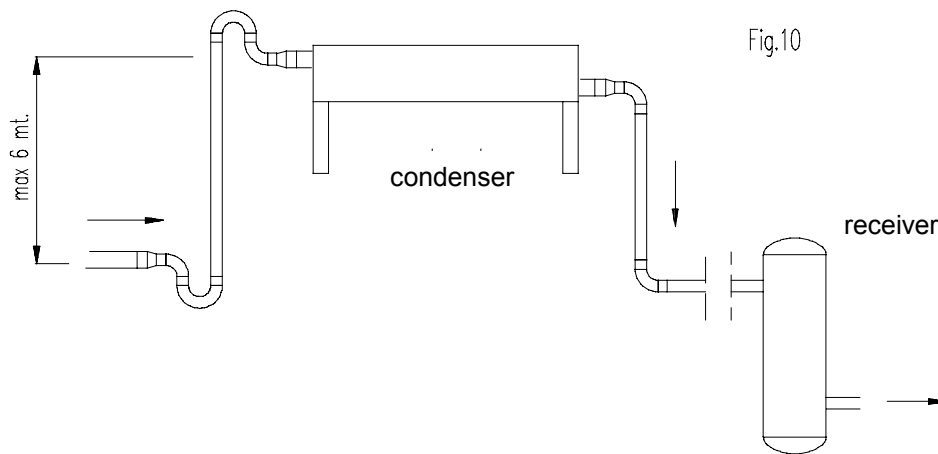
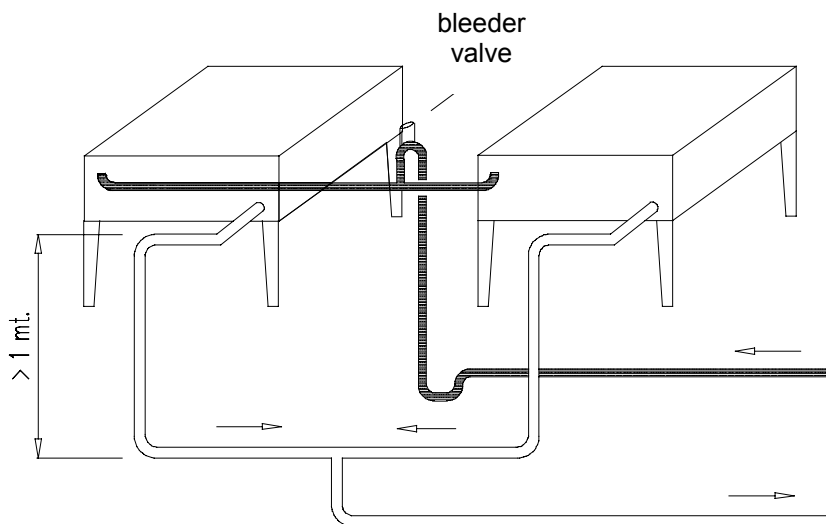


between the former two does not exceed 5 mt. Otherwise (beyond 5 mt.), the discharge line will have to include an intermediate siphon (to this respect, refer to the upward suction stretches section above).



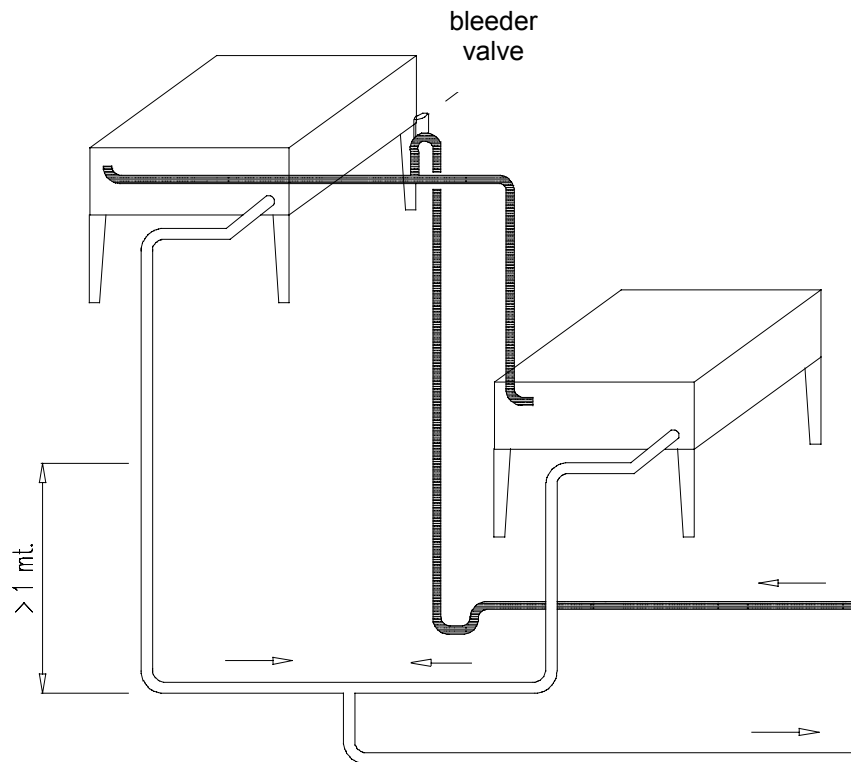
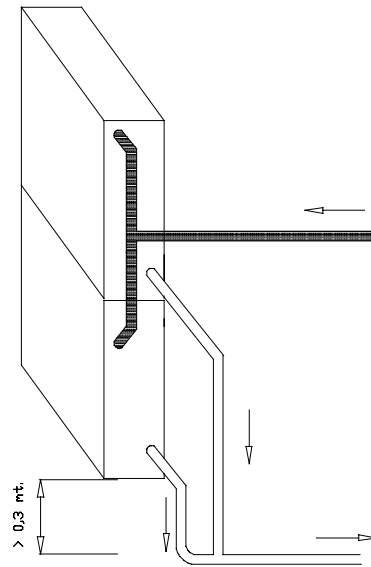
Line diameters must comply with the values appearing in the connection diagrams. As for positioning and fastening vibration dampers, refer to the next section.



The connection between two parallel condensers will have to be carried out as represented in the drawing above. Place an exhaust valve at the highest point of the installation (Fig. 11).

Two particular cases are dealt with below:

- a) double-battery condenser placed vertical;
- b) parallel connection of two condensers placed on different levels.



13. CONNECTION OF DISPLAY CASE PIPING

Before installing, study the best position for valves and cocks, considering that they might need maintenance (example: replacement of filter).